

2/14/2025

Attn: Hector Terminal Expansion & Renovation – Bid Pack #4

Subject: Bidder Questions

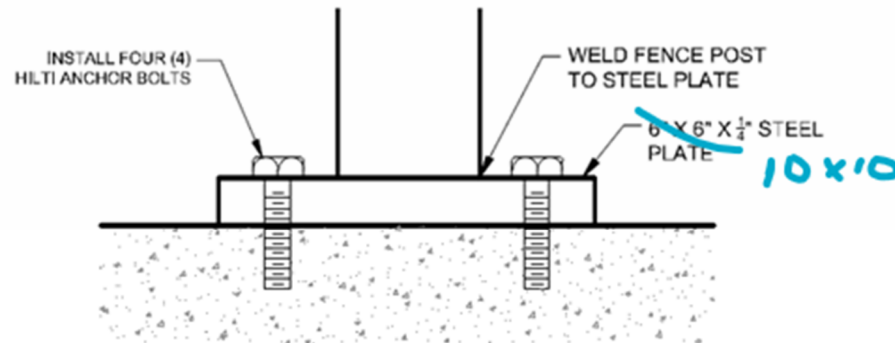
Documents:

Construction Documents Issued by Mead & Hunt

Bid Package #4 Questions

Questions

1. What is the distance allowed for plant material? Majority of material comes from Minneapolis, is that acceptable?
 - a. The plant material listed on the legend as '*Native Grasses and Perennials -Local Seed Source' are the only plants identified to be grown from local seed sources. The range of the seed source(s) can be extended to 200 miles from Fargo as long as the plants are still hardy here. All other plant materials listed in the legend can be obtained from normal plant suppliers for the area, including Minneapolis.
2. Is it acceptable to bid 3.5" pots instead of 4"?
 - a. 3.5" pots in lieu of 4" pots is acceptable.
3. Regarding the joint sealant for the 8" and 12" PCC. Typical City of Fargo spec is hot pour on everything. The details on C342 are calling for silicone. This is usually significantly more expensive than hot pour. Please confirm silicone is required and not hot pour.
 - a. Silicone is required.
4. The permanent fence drawing on sheet C-601 has a note that says "Proposed security fence shall be secured to the existing apron pavement when within the apron area. Fencing beyond the apron limits will follow detail 1/C-601)". If I'm not mistaken, much of the fence to be installed would be considered "within the apron area" (at least 320 LF). Do you have a spec or drawing that depicts exactly how the fence should be secured to the existing apron pavement, as to meet airport standards?
 - a. The detail in the plans should be modified to a 10" x 10" x 1/4" steel plate as shown below



3 SECURE LINE POST TO EXISTING CONCRETE DETAIL

NO SCALE

5. In the fencing specification there are items that contradict the fencing details as shown on C-601. Are we all right to assume the fence is to be built as shown on plan page C-601?
 - a. Fencing detail and specifications are correct. Please ensure the correct permanent fence specification is used Chain-Link Fence 32 31 16. NOT Temporary Security Chain Link Fences and Gates
6. The fence appears to go along the top of an apron that is labeled "future". Will this apron be complete when the work for this bid scope starts?
 - a. Yes, the apron will be complete prior to fencing installation.
7. Plan sheets C-311 through C-313 include a note stating that the parking lot and the road shall be constructed to the City of Fargo Standards and Specification. So, the Section 03 specifications for concrete reinforcing, cast-in-place concrete, etc that are included with the project documents don't apply to this work?
 - a. Correct, these are structural specifications
8. Plan sheet C-342 includes a note "see sheet C-342 for City of Fargo jointing details (which actually aren't City of Fargo details). Nothing is mentioned about City of Fargo specifications. Do the City of Fargo standard specification or the Section 03 specifications apply to apron pavement? Section 03 specifications appear to be geared towards building construction. Please clarify what specification apply where.

- a. Please use standard City of Fargo Specifications and Details and refer to jointing details as noted on the drawings for layout