



ADDENDUM 2 – RE-BID

Addendum #	2	Date Issued	May 29, 2026
Project Name Job #	WC Park & Rec Shop		20262250
Bid Date Time	July 9 th , 2026		11:00am Local Time

THIS ADDENDUM AMENDS AND BECOMES PART OF THE CONTRACT DOCUMENTS FOR EAPC PROJECT 20262250 DATED MAY 20th, 2026, RESPECTIVELY. EACH BIDDER SHALL ACKNOWLEDGE RECEIPT OF THIS ADDENDUM BY MARKING THE ADDENDUM NUMBER AND DATE ON THE BID FORM.

PRE-BID MEETING

PLAN HOLDERS LIST

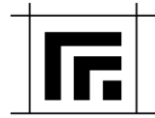
The current Plan Holders List is attached.

SPECIFICATIONS

00 2000	REVISE bid closing date to July 9 th , 2026 at 11 am local time.
01 2300	ADD Alternate No. 2 – Provide access control and electric strikes for exterior doors 100A, 100D, and 100F.
08 7100.13	ADD door numbers to respective door hardware section, updated Door Hardware Section #5 to be an Alternate.
10 1423	REVISE 2.3.A.3 Sign size to typical 4 inches by 6 inches. ADD 2.4 Signage Applications. There should be total of 6 signs.
12 2400	REVISE window shades to be provided on all windows.

DRAWINGS

A021	REVISED L wall type label to remove “w/ liner panel”, correct Wall Type B7 to have 2x6 wood studs.
A201	ADD sanitary napkin dispenser next to toilet paper dispenser per specification 10 2800. ADD Utility Shelf/Mop holder above mop sink per specification 10 2800.
A701	ADD 6/A701 RFP 4'-0" on either side of the mop sink.



E401 **REVISE** Keynote 1 to add access control information under Alternate 2.

REVISE Keynote tags for electric service and internet service provider clarification.

PRIOR APPROVALS

07 2500	Weather Barriers	Dryvit Backstop Smooth & Dymonic 100
07 4213	Metal Wall Panels	Metal Sales – EM15-122 Series Empire L
08 7100	Door Hardware	Sargent 80 Series Exit Devices
		Sargent 10X Line Bored Lock
		Sargent 281 Series Door Closers
		Sargent Degree Cylinders-Keying
		Rockwood Accessories & Plates
		Securitron CEPT Series Power Transfer
		Norton 6300 Series Operator
		Rixson OH Stops & Holders
26 0000	Lighting	
	Fixture Type	Manufacturer
	A	Lithonia Stack
	B	Lithonia Stack
	C	Lithonia LBR6
	D	Lithonia Compact Pro
	E1	Lithonia EXRG
	EM	Lithonia ELM2L
	F	Lithonia CSS
	AA	Lithonia WDGE2 LED

**ATTACHMENTS**Specifications:

00 2000	INVITATION TO BID – RE-BID
01 2300	ALTERNATES
08 7100.13	DOOR HARDWARE SCHEDULE
10 1423	PANEL SIGNAGE

Drawings:

E401	FIRST FLOOR SYSTEMS PLAN
------	--------------------------

END ADDENDUM 2

SECTION 00 0200 – INVITATION TO BID – RE-BID

PROJECT. Watford City Park District – Park Shop
BIDS CLOSE. Thursday, July 9th, 2026, 11AM local time
PROJECT #. 20262250
DATE OF ISSUE. May 20, 2026
BY. EAPC Architects Engineers
313 Main Street
Williston, ND 58801
PHONE: 701-609-5290

OUTLINE OF PROJECT. New wood framed 40' x 80' shop / office building for the Park District. The shop will have two offices, breakroom, restroom, and large shop space with three overhead doors. Exterior will be metal panel with metal panel roofing.

TYPE OF BIDS. Separate bids will be received at the same time on the following portions of the work, separately as listed or combined at the bidders option:

General Contract
Mechanical Contract
Electrical Contract
Single prime General Contract including all portions of work

THE OWNER. MAILING ADDRESS:
Watford City Park District
P.O. Box 13
Watford City, ND 58854
DROP OFF:
Watford City Parks & Recreation
2209 Wolves Den Parkway
Watford City, ND 58854
BID PLACE. Rough Rider Center
2209 Wolves Den Parkway
Room: TBD
Watford City, ND 58854

Bids received after the designated time will not be accepted. All interested parties are invited to attend. Bids will be opened and publicly read aloud at the Rough Rider Center meeting space TBD. It is the bidder's responsibility to see that mailed or delivered bids are in the hands of the Owner prior to the time of the bid opening.

OBTAINING DOCUMENTS. Drawings and Specifications may be examined at the Architect/Engineer's office, and the Owner's office at the address shown above and:

QuestCDN (www.questcdn.com)

Dodge Plan Room and SCAN in Minneapolis.

ConstructConnect

Minnesota Builders Exchanges: Minnesota Builders Exchange in Minneapolis

North Dakota Builders Exchanges: Bismarck, Dickinson, Fargo, Grand Forks, Minot, Williston

South Dakota Builders Exchanges: Aberdeen, Plains Builders in Sioux Falls, Rapid City, Sioux Falls

Montana Builders Exchange: Billings

Wyoming Builders Exchange: Gillette

If Contractor receives his bidding documents from a plans exchange, it is the Contractors responsibility to contact EAPC Architects Engineers to be added to the plan holders list.

Complete digital project bidding documents are available at www.questcdn.com. You may download the digital plan documents for \$22.00 by inputting Quest project #10217503 on the website's Project Search page. Please contact QuestCDN.com at 952-233-1632 or info@questcdn.com for assistance in free membership registration, downloading, and working with this digital project information.

Partial or complete sets of prints and specifications may be obtained from EAPC by other than the above. The sets or partial sets will be distributed upon receipt of payment for the information charged at the current reproduction rate. None of this payment will be refunded. Completeness and adequacy of the list of documents requested shall be the responsibility of the person making the request.

BID SECURITY. Bid Security in the amount of five (5%) percent of the Bid including all add alternates, must accompany each Bid in accord with the Instructions to Bidders 00 1000.7. Cash, Bidders Bond, cashier's checks or certified checks will be accepted.

BID SECURITY. Each bid shall be accompanied by a separate envelope containing a Bidders Bond in a sum equal to five percent of the full amount of the bid, including all add alternates, executed by the bidder as principal and by a Surety Company authorized to do business in this State, conditioned that if the Principal's bid be accepted and the contract awarded to them, they, within ten days after notice of award, will execute and effect a contract in accordance with the terms of their bid and a Contractor's Bond as required by law and the regulations and determinations of the governing Board. Cash, cashier's checks or certified checks will not be accepted. See Instructions to Bidders 00 1000, Art. 7.

NORTH DAKOTA LAW. All bidders must be licensed for the highest amount of their bids, as provided by North Dakota Century Code Section 43-07-07; and no bid will be read or considered which does not fully comply with the above provisions as to bond and licenses, and any bid deficient in these respects submitted will be re-sealed and returned to the bidder immediately.

THE OWNER reserves the right to waive irregularities, to reject Bids and to hold all Bids for a period of 30 days after the date fixed for the opening thereof.

By order of: **Robin Arndt, Parks Superintendent**

END OF SECTION 00 0200

SECTION 01 2300 - ALTERNATES

PART 1 GENERAL

1.1 SECTION INCLUDES

- A. Description of Alternates.
- B. Procedures for pricing Alternates.
- C. Documentation of changes to Contract Price and Contract Time.

1.2 RELATED REQUIREMENTS

- A. Document 00 2113 - Instructions to Bidders: Instructions for preparation of pricing for Alternates.
- B. Document 00 5200 - Agreement Form: Incorporating monetary value of accepted Alternates.

1.3 ACCEPTANCE OF ALTERNATES

- A. Coordinate related work and modify surrounding work to integrate the Work of each Alternate.

1.4 SCHEDULE OF ALTERNATES

- A. Alternate No. 1 - Allow SIPS panel construction and associated foundations:
 - 1. Base Bid Item: Under base bid, there are no SIPS panels or shallow foundations.
- B. Alternate No. 2 - Provide access control and electric strikes for doors 100A, 100D, and 100F - See hardware set #5:
 - 1. Base Bid Item: Keyed Lockset: ND53.

PART 2 PRODUCTS - NOT USED

PART 3 EXECUTION - NOT USED

END OF SECTION 01 2300

SECTION 08 7100.13 - DOOR HARDWARE SCHEDULE

PART 1 GENERAL

1.1 SECTION INCLUDES

- A. Preliminary schedule of door hardware sets for swinging doors as indicated on drawings.

1.2 RELATED REQUIREMENTS

- A. Section 08 7100 - Door Hardware: Requirements to comply with in coordination with this section.
- B. Section 08 7113 - Power Door Operators: Requirements for power door operators.

1.3 REFERENCE STANDARDS

- A. BHMA A156.18 - Standard for Materials and Finishes; 2020.

1.4 SUBMITTALS

- A. Comply with submittal requirements as indicated in Section 08 7100.

PART 2 PRODUCTS

2.1 MANUFACTURERS

- A. Only manufacturers listed in Door Hardware Schedule or Section 08 7100 are considered acceptable, unless noted otherwise.
- B. Obtain each type of door hardware as indicated from a single manufacturer and single supplier.
- C. Products are listed and certified compliant with specified standards by BHMA (CPD).
- D. Manufacturer's Abbreviations: Coordinate with manufacturers listed in Section 08 7100.
 - 1. BUR - Burns Manufacturing, Inc.
 - 2. GLY - Glynn Johnson.
 - 3. HES - HES.
 - 4. IVE - Ives.
 - 5. LCN - LCN.
 - 6. REE - Reese
 - 7. SCH - Schlage.
 - 8. VON - Von Duprin.
 - 9. ZRO - Zero Industries, Inc.

2.2 DESCRIPTION

- A. Door hardware sets provided represent the design intent, they are only a guideline and should not be considered a detailed or complete hardware schedule.
 - 1. Necessary items that are not included in a Hardware Set should be added and have the appropriate additional hardware as required for proper application and functionality.
 - 2. Door hardware supplier is responsible for providing proper size and hand of door for products required in accordance with Door Hardware Schedule and as indicated on drawings.
 - 3. Quantities listed are for each Pair (PR) of doors, or for each Single (SGL) door, as indicated in hardware sets.

2.3 LOCK FUNCTION CODES

- A. Function Codes for Cylindrical Locks: Complying with BHMA A156.5.
 - 1. Code F75; Passage: Latch retracted by knobs/levers at all times.
 - 2. Code F76; Privacy Lock: Outside knob/lever locked by pushbutton on inside knob/lever. Rotating inside knob/lever or closing door releases/unlocks button. Emergency release in outside knob/lever.
 - 3. Code F80; Communicating Lock: Deadlocking latch bolt by levers except when either lever is locked by key in its own cylinder.
 - 4. Code F84; Classroom Lock: Outside knob/lever locked/unlocked by key in outside knob/lever. Inside knob/lever always free. Deadlocking latchbolt.
 - 5. Code F86; Storeroom Lock: Outside knob/lever always locked/rigid. Latchbolt retracted by key in outside knob/lever or by rotating inside knob/lever. Inside knob/lever always free. Deadlocking latchbolt.
 - 6. Code F109; Entry/Office Lock: Turn/Push button locking. Pushing and turning button on inside locks outside knob/lever requiring use of a key until button is manually unlocked. Push button locking. Pushing button locks the outside knob/lever until unlocked by key or by turning the inside knob/lever. Inside knob/lever always free.
 - 7. Code F110; Classroom Security Lock: Key cylinder both sides. Outside lever locked/unlocked by key in either lever. Inside lever always free.
- B. Function Codes for Exit Devices: Complying with BHMA A156.3.
 - 1. Code 01; Exit Device: Exit only/no trim.
 - 2. Code 03; Exit Device: Entrance by trim when latchbolt is retracted by key (pullside). Unit is locked when the key is removed.
 - 3. Code 08; Exit Device: Entrance by knob/lever. Key (pullside) locks/unlocks knob/lever.

2.4 FINISHES

- A. Finishes: Complying with BHMA A156.18.
 - 1. Code 626: Satin chromium plated over nickel, with brass or bronze base material (former US equivalent US26D).
 - 2. Code 628: Clear anodized aluminum.
 - 3. Code 630: Satin stainless steel, with stainless steel 300 series base material (former US equivalent US32D).
 - 4. Code 652: Satin chromium plated over nickel, with steel base material (former US equivalent US26D).
 - 5. Code 689: Aluminum painted, with any base material (former US equivalent US28).

PART 3 EXECUTION

3.1 DOOR HARDWARE SCHEDULE

- A. Organize listing of door hardware components within each hardware set in compliance with 10-Part scheduling sequence indicated in DHI (H&S), unless otherwise indicated.
- B. HARDWARE SCHEDULE NOTES:
 - 1. Wall stop or overhead stop to be provided where scheduled as installation configuration warrants.
 - 2. ADD door seal set to all smoke- or fire-resistance rated doors - see Door Schedule. Gasketing to be ZRO 188S or approved equal, length as required.
 - 3. All doors specified without weatherstripping, gaskets or seals shall have frame silencers. Provide IVE SR64 or approved equal, minimum 3 per door (2 for double doors).
 - 4. Interface electric strike or latch retraction release operation with door security / lockdown system and power operator where indicated

3.2 **HARDWARE SET #01: TOILET ROOMS**

- A. For use on Door Number(s): 106.
- B. Provide for each interior Single (SGL) door(s).

UNITS	LOCK	ITEM	DESCRIPTION	FINISH	MFR
EA		HINGES	AS REQUIRED	652	IVE
1 EA	F76	PRIVACY LOCK	ND40S	626	SCH
1 EA		CLOSER ^A	4011	689	LCN
1 EA		WALL STOP	WS406CVX	626	IVE
		OR	OVERHEAD STOP	90S	GLY
1EA		ARMOR PLATE	8400 LDW B4E	630	IVE

- C. FUNCTION: ANSI Function F76 – Lever with emergency release recessed slot outside; push button in lever inside; springlatch. In unlocked state latch is retracted by either lever. Outside lever is made inoperative by pushing button on inside lever. Rotating inside lever retracts latch and releases button unlocking outside lever; closing door also unlocks preventing lockout. Emergency unlock: an emergency key or small, flat screwdriver inserted in outside lever and turned releases button to unlock. Inside lever always free for immediate egress.

3.3 **HARDWARE SET #02: OFFICES**

- A. For use on Door Number(s): 101, 102.
- B. Provide for each Single (SGL) door(s).

UNITS	LOCK	ITEM	DESCRIPTION	FINISH	MFR
EA		HINGES	AS REQUIRED	652	IVE
1 EA	F109	ENTRANCE LOCK	ND53	626	SCH
1 EA		WALL STOP	WS406CVX	626	IVE
		OR	OVERHEAD STOP	90S	GLY

- C. FUNCTION: ANSI Function F109 – Outside lever is locked or unlocked by push/turn button on inside; Entrance by key only when locked – Inside lever is always unlocked.

3.4 **HARDWARE SET #03: LATCH ONLY**

- A. For use on Door Number(s): 103, 104.
 B. Provide for each Single (SGL) door(s).

UNITS	LOCK	ITEM	DESCRIPTION	FINISH	MFR
EA		HINGES	AS REQUIRED	652	IVE
1 EA	F75	PASSAGE LATCH	ND10	626	SCH
1 EA		WALL STOP	WS406CVX	626	IVE
OR		OVERHEAD STOP	900S	630	GLY

- C. FUNCTION: ANSI Function F75 – Latch retracted by either lever at all times.

3.5 **HARDWARE SET #04,: STORAGE ROOMS**

- A. For use on Door Number(s): 105.
 B. Provide for each Single (SGL) door(s).

UNITS	LOCK	ITEM	DESCRIPTION	FINISH	MFR
EA		HINGES	AS REQUIRED	652	IVE
1 EA	F86	STOREROOM LOCK	ND80	626	SCH
1 EA		CLOSER ^A	4011	689	LCN
1 EA		WALL STOP	WS406CVX	626	IVE
OR		OVERHEAD STOP	90S	630	GLY
1 EA		KICK PLATE	8400 10"x2" LDW	630	IVE

- C. FUNCTION: ANSI Function F86 – Outside lever is always locked; Entrance by key only – Inside lever is always unlocked.

3.6 **HARDWARE SET #5 (ALTERNATE NO. 2): ENTRANCE DOORS - EXTERIOR**

- A. For use on Door Number(s): 100A, 100D, 100F.
 B. Provide for each Single (SGL) door(s).

UNITS	LOCK	ITEM	DESCRIPTION	FINISH	MFR
EA		HINGES	AS REQUIRED	652	IVE
1 EA		POWER TRANSFER HINGE	VDE-EPT-10		VON
1EA	08	ELEC PANIC DEVICE	QEL-99L	626	VON
1EA		CYLINDER	90S		SCH
1 EA		POWER OPERATOR	4642	689	LCN
1EA		PUSH PLATES ^A			LCN
1 EA		CLOSER	4041-EDA	689	LCN
1EA		OVERHEAD STOP	100S	630	GLY

1EA	KICK PLATE	8400 10"x2" LDW	630	IVE
1EA	DOOR SWEEP	8198	628	ZER
1SETS	WEATHERSTRIP	429	BLK	ZER
1 EA	RAIN DRIP	142	628	ZER
EA	THRESHOLD	S282-A	MILL	REE
	CARD READER			
	POWER SUPPLY			
	WIRING DIAGRAM			

- C. FUNCTION: Lever panic hardware with electric latch retraction. Outside lever locked and unlocked by outside key. Latch electrically retracted by door access system for push/pull operation. Inside push pad retracts latch for egress.

END OF SECTION 08 7100.13

SECTION 10 1423 - PANEL SIGNAGE

PART 1 GENERAL

1.1 SECTION INCLUDES

- A. Panel signage.

1.2 REFERENCE STANDARDS

- A. ADA Standards - 2010 ADA Standards for Accessible Design; 2010.
- B. ICC A117.1 - Accessible and Usable Buildings and Facilities; 2017.

1.3 SUBMITTALS

- A. See Section 01 3000 - Administrative Requirements for submittal procedures.
- B. Product Data: Manufacturer's product literature for each type of panel sign, indicating styles, font, foreground and background colors, locations, and overall dimensions of each sign.
- C. Shop Drawings:
 - 1. Include dimensions, locations, materials, text and graphic layout, attachment details, and schedules.
 - 2. Schedule: Provide information sufficient to completely define each panel sign for fabrication, including room number, room name, other text to be applied, sign and letter sizes, fonts, and colors.
 - a. When room numbers to appear on signs differ from those on drawings, include the drawing room number on schedule.
 - b. When content of signs is indicated to be determined later, request such information from Owner through Architect at least 2 months prior to start of fabrication; upon request, submit preliminary schedule.
 - c. Submit for approval by Owner through Architect prior to fabrication.
- D. Samples: Submit two samples of each type of sign, of size similar to that required for project, indicating sign style, font, and method of attachment.
- E. Selection Samples: Where colors, materials, and finishes are not specified, submit two sets of color selection charts or chips.
- F. Verification Samples: Submit samples showing colors, materials, and finishes specified.
- G. Manufacturer's Installation Instructions: Include installation templates and attachment devices.
- H. Manufacturer's qualification statement.
- I. Maintenance Materials: Furnish the following for Owner's use in maintenance of project.
 - 1. See Section 01 6000 - Product Requirements for additional provisions.

1.4 QUALITY ASSURANCE

- A. Manufacturer Qualifications: Company specializing in manufacturing the products specified in this section with minimum three years of documented experience.

1.5 DELIVERY, STORAGE, AND HANDLING

- A. Package signs as required to prevent damage before installation.
- B. Package room and door signs in sequential order of installation, labeled by floor or building.
- C. Store under cover and elevated above grade.
- D. Store tape adhesive at normal room temperature.

1.6 FIELD CONDITIONS

- A. Do not install tape adhesive when ambient temperature is lower than recommended by manufacturer.
- B. Maintain minimum ambient temperature during and after installation.

PART 2 PRODUCTS

2.1 MANUFACTURERS

- A. Panel Signage:
 - 1. Inpro Corporation; _____ : www.inprocorp.com/#sle.
 - 2. Takeform: www.takeform.net/#sle.
 - 3. Substitutions: See Section 01 6000 - Product Requirements.

2.2 REGULATORY REQUIREMENTS

- A. Accessibility Requirements: Comply with ADA Standards and ICC A117.1 and applicable building codes, unless otherwise indicated; in the event of conflicting requirements, comply with the most restrictive requirements.

2.3 PANEL SIGNAGE

- A. Panel Signage:
 - 1. Application: Room and door signs.
 - 2. Description: Flat signs with applied character panel media, tactile characters.
 - 3. Sign Size: 4 inches by 6 inches.
 - 4. Total Thickness: 1/8 inch.
 - 5. Color and Font, unless otherwise indicated:
 - a. Character Font: As selected by Architect from manufacture's full range of font.
 - b. Character Case: Upper case only.
 - c. Background Color: As selected by Architect from manufacture's full range of color.
 - d. Character Color: Contrasting color.
 - 6. Material: Acrylic plastic base with applied plastic letters and braille.

7. Profile: Flat panel without frame.
8. Tactile Letters: Raised 1/32 inch minimum.
9. Braille: Grade II, ADA-compliant.
10. One-Sided Wall Mounting: Tape adhesive.

2.4 SIGNAGE APPLICATIONS

- A. Room and Door Signs:
 1. Office Doors: Identify with room names and numbers to be determined later, not those indicated on drawings.
 2. Service Rooms: Identify with room names and numbers to be determined later, not those indicated on drawings.
 3. Rest Rooms: Identify with pictograms, the names "MEN" and "WOMEN", room numbers to be determined later, and braille.

2.5 ACCESSORIES

- A. Tape Adhesive: Double-sided tape, permanent adhesive.

PART 3 EXECUTION

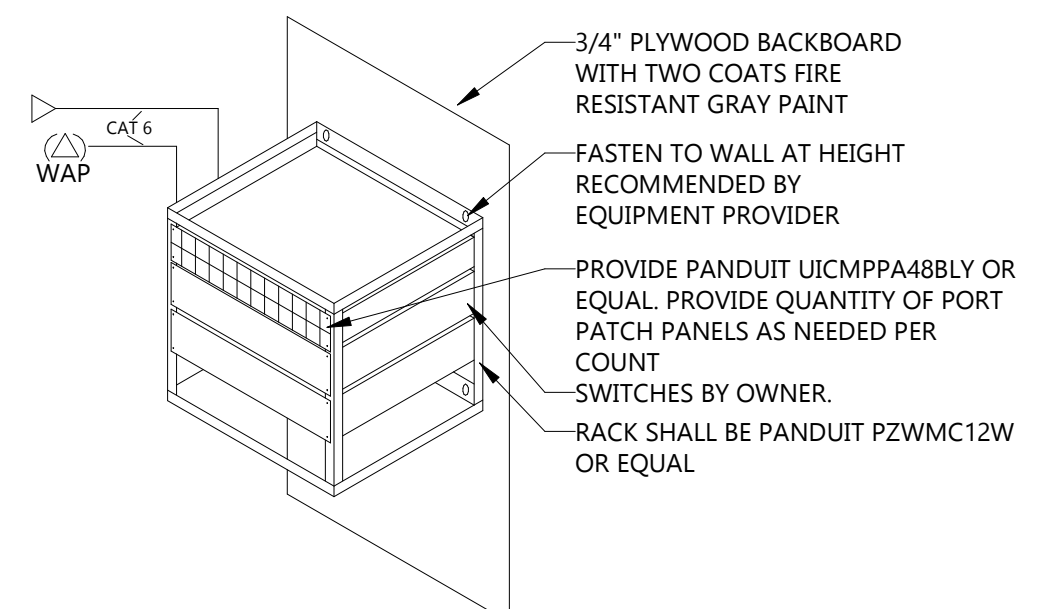
3.1 EXAMINATION

- A. Verify that substrate surfaces are ready to receive work.
- B. Verify that power and data service is correctly sized and located to accommodate panel signs.
- C. Notify Architect if conditions are not suitable for installation of signs; do not proceed until conditions are satisfactory.

3.2 INSTALLATION

- A. Install in accordance with manufacturer's instructions.
- B. Install with horizontal edges level.
- C. Locate panel signs and mount at heights indicated on drawings and in accordance with ADA Standards and ICC A117.1.
- D. Protect from damage until date of Substantial Completion; repair or replace damaged items.

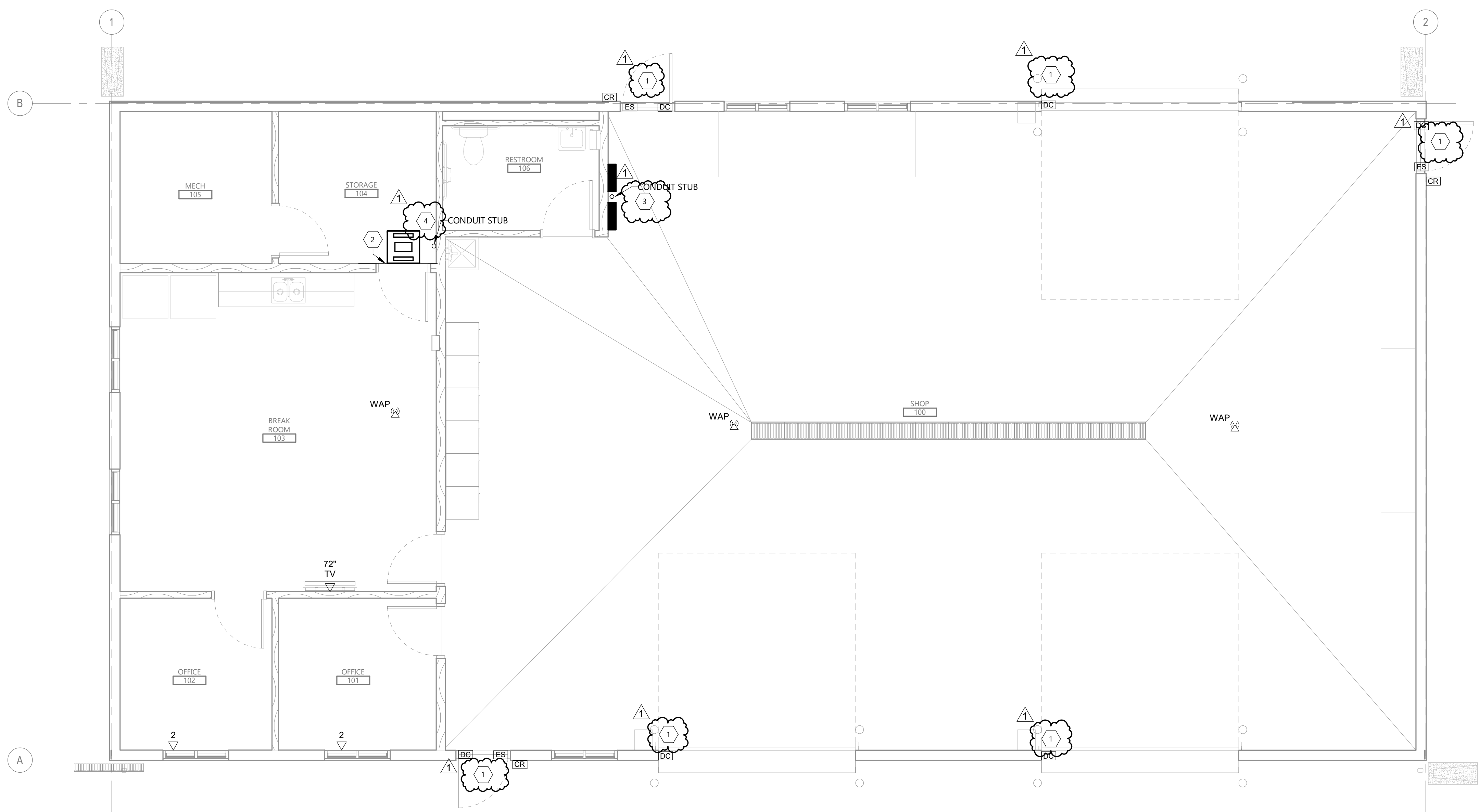
END OF SECTION 10 1423



2 WALL MOUNTED DATA RACK
E401 NOT TO SCALE

- GENERAL NOTES**
- A. PROVIDE APPROVED FIRE PROOFING MATERIALS / METHODS FOR CABLE PASSING THROUGH FIRE WALLS AND FLOORS.
 - B. DATA CABLE SHALL BE CAT6 PLENUM RATED UNLESS NOTED OTHERWISE. CABLE COLOR SHALL BE BLUE UNLESS NOTED OTHERWISE OR COLOR AS REQUIRED BY OWNER STANDARDS.
 - C. ALL DATA AND PAGING SYSTEMS CABLING SHALL TERMINATE IN RACK LOCATED IN ROOM STORAGE 104.
 - D. PROVIDE 4" HILT-PASS THRU FOR CABLE PASSING THROUGH FIRE WALLS AND FLOORS. SEE FIRE PROTECTION PLANS FOR LOCATION OF RATED WALLS. PENETRATIONS THROUGH FIRE RATED WALLS, PARTITIONS, FLOORS OR CEILING SHALL BE FIRE STOPPED USING APPROVED METHODS TO MAINTAIN THE FIRE-RESISTANCE RATING.
 - E. COORDINATE MOUNTING HEIGHTS AND LOCATIONS FOR ALL WALL MOUNTED ELECTRICAL DEVICES WITH ARCHITECTURAL ELEVATIONS. COORDINATE ALL CEILING MOUNTED ELECTRICAL DEVICES WITH ARCHITECTURAL REFLECTED CEILING PLAN.

- KEYNOTE LEGEND:**
- <<< INDICATES KEYNOTE ON PLAN
1. UNDER ALTERNATE 2 ELECTRICAL CONTRACTOR TO COORDINATE INSTALLATION OF POWER SUPPLIES FOR CARD READERS WITH DOOR HARDWARE SUPPLIER. PROVIDE 120VAC WHERE POWER SUPPLIES ARE REQUIRED. PROVIDE 3/4" GRAY PAINTED, FIRE RETARDANT PLYWOOD ABOVE ROOM DOOR FOR MOUNTING OF EQUIPMENT. PROVIDE PRIMUS ACCESS CONTROL COMPOSITE CABLE PLENUM CMP/CL2P #18/4, #22/4, #22/2, 22/3 SHIELDED BANANA CABLING OR APPROVED EQUAL. SEE 1/E804.
 2. PROVIDE 3/4" GRAY PAINTED, FIRE RETARDANT PLYWOOD ABOVE ROOM DOOR FOR MOUNTING OF DATA RACK.
 3. PROVIDE 2" CONDUIT STUB FOR FUTURE WARMING HOUSE CONNECTION. SEE 1/E100.
 4. PROVIDE 2" CONDUIT STUB FOR INTERNET SERVICE CONNECTION. SEE 1/E100.



CLIENT
WATFORD CITY PARK DISTRICT

PROJECT DESCRIPTION
WATFORD CITY PARK SHOP

CITY **WATFORD CITY**
STATE **ND**

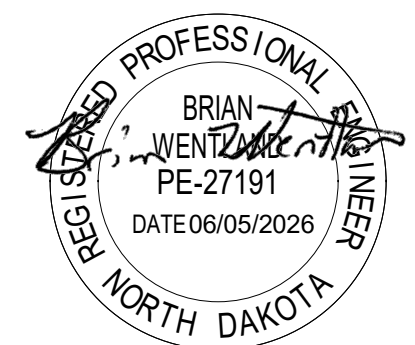
ISSUE DATES

1	ADDENDUM 2	06/05/2026
CD	RE-BID	05/20/2026
MARK	DESCRIPTION	DATE

PROJECT NO: **20262250**
DRAWN BY: **TA**
CHECKED BY: **BW**

COPYRIGHT:
All plans, specifications, computer files, field data, notes and other documents and instruments prepared by EAPC as instruments of service shall remain the property of EAPC. EAPC shall retain all common law, statutory and other reserved rights, including the copyright there to.

STAMP



DRAWING TITLE
FIRST FLOOR SYSTEMS PLAN

E401

