

# Water Plant Re-Roof

## Miles City, MT 59301

### OWNER:

TOM SPEELMON  
CITY OF MILES CITY  
17 S. 8TH STREET  
MILES CITY, MT 59301  
406-234-1496

### BUILDING DEPARTMENT:

GABE MARTINSEN  
MILES CITY BUILDING INSPECTOR  
17 S. 8TH STREET  
MILES CITY, MT 59301  
406-874-8611

### ARCHITECT:

BRANDON JANSSEN, AIA  
SDI ARCHITECTS + DESIGN  
909 MAIN STREET  
MILES CITY, MT 59301  
406-234-0777

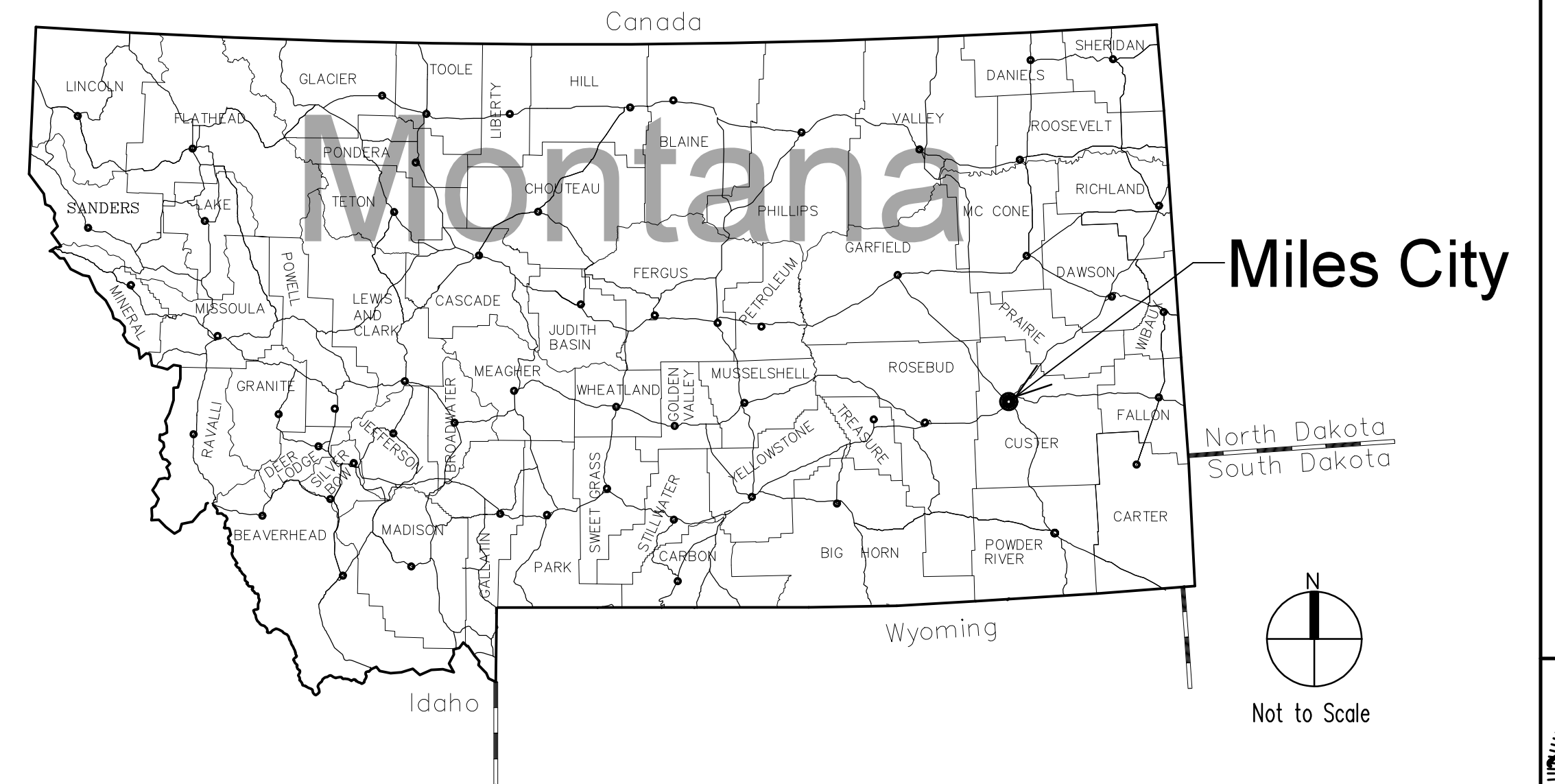
### DRAWING INDEX

#### General Information

G1.0 PROJECT TITLE, CONTACTS, INFO

#### Architectural

A1.0 ROOF PLAN & NOTES  
A1.1 ROOF PLAN IMAGES  
A2.0 EXTERIOR ELEVATIONS  
A5.0 DETAILS



DWG SET #:

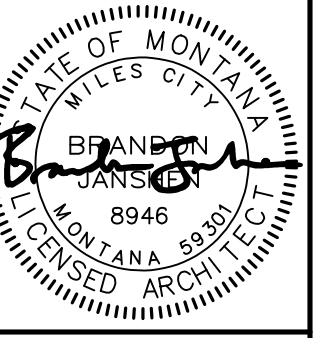
### ABBREVIATIONS

@	ANCHOR BOLT	E.C.	ELECTRICAL CONTRACTOR	M.C.	MECHANICAL CONTRACTOR	SCH	SCHEDULE
A.B.	ANCHOR BOLT	E.J.	EXPANSION JOINT	MFR	MANUFACTURER	SHT	SHEET
A.F.F.	ABOVE FINISHED FLOOR	ELEV.	ELEVATION	MAX	MAXIMUM	SIM	SIMILAR
ALT	ALTERNATE	ELEC	ELECTRICAL	MBM	METAL BUILDING MANUFACTURER	SPI	SPRAY POLYURETHANE INS.
ALUM.	ALUMINUM	EQ.	EQUAL	MECH	MECHANICAL	S.S.	STAINLESS STEEL
BM	BEAM	ESB	EQUIPMENT STORAGE BUILDING	MIN	MINIMUM	STD	STANDARD
B.U.	BUILT UP	EXIST	EXISTING	MISC	MISCELLANEOUS	SYM.	SYMMETRICAL
CL	CENTER LINE	EXP.	EXPANSION	M.O.	MASONRY OPENING	T&G	TONGUE AND GROOVE
CDX	EXTERIOR GRADE PLYWOOD	EXT.	EXTERIOR	MT	MONTANA	THRU	THROUGH
CLG.	CEILING	FLR	FLOOR	NO. or #	NUMBER	T.J.I	TRUSS JOIST INCORPORATED
CLR	CLEAR	F.C.	FACE OF CONCRETE	N.T.S.	NOT TO SCALE	T.O.	TOP OF
CMU	CONCRETE MASONRY UNIT	F.R.	FIRE RETARDANT/TREATED	O.C.	ON CENTER	T.O.B.	TOP OF BEAM
COL	COLUMN	F.R.	FIRE RETARDANT/TREATED	O.D.	OUTSIDE DIAMETER	T.O.F.	TOP OF FOOTING
CONC.	CONCRETE	GALV.	GALVANIZED	OH	OVERHEAD	T.O.S.	TOP OF SLAB
CONC.	CONCRETE	GA.	GAUGE	OPP	OPPOSITE	T.O.W.	TOP OF WALL
CONT	CONTINUOUS	G.C.	GENERAL CONTRACTOR	PAP	PATCH & PAINT	TYP	TYPICAL
CSK	COUNTERSINK	G.W.B	GYPSON WALL BOARD	PL	PLATE	U.G.	UNDERGROUND
CSK	COUNTERSINK	HVAC	HEATING, VENTILATION, AIR CONDITIONING	PLY	PLYWOOD	US	UNITED STATES
DBL	DOUBLE	HWY	HIGHWAY	PVL	PANEL	VCT	VINYL COMPOSITION TILE
DIA or Ø	DIAMETER	INFO	INFORMATION	PVC	POLYVINYLCHLORIDE	VERT	VERTICAL
DIM	DIMENSION	INS	INSULATION	QTY	QUANTITY	W/	WITH
DN	DOWN	IWP	INSULATED WALL PANEL	R	RADIUS	WC	WALL COVERING
D.S.	DOWNSPOUT	LB	POUND	REBAR	REINFORCING STEEL	WP	WATER PROOF
DWG	DRAWING	LVL	LAMINATED VENEER LUMBER	REF	REFERENCE	WWF	WELDED WIRE FABRIC
EPS	EXPANDED POLYSTYRENE INS			REQ	REQUIRED	XPS	EXTRUDED POLYSTYRENE
EA	EACH			R.M.	ROOM		
EIFS	EXTERIOR INSULATION FINISH SYSTEM			R.O.	ROUGH OPENING		



# sdi architects + design

sdi architects + design  
909 main street  
miles city, montana 59301  
406 . 234 . 0777



Water Plant Re-Roof  
67 Water Plant Rd  
Miles City, MT 59301

### Revisions

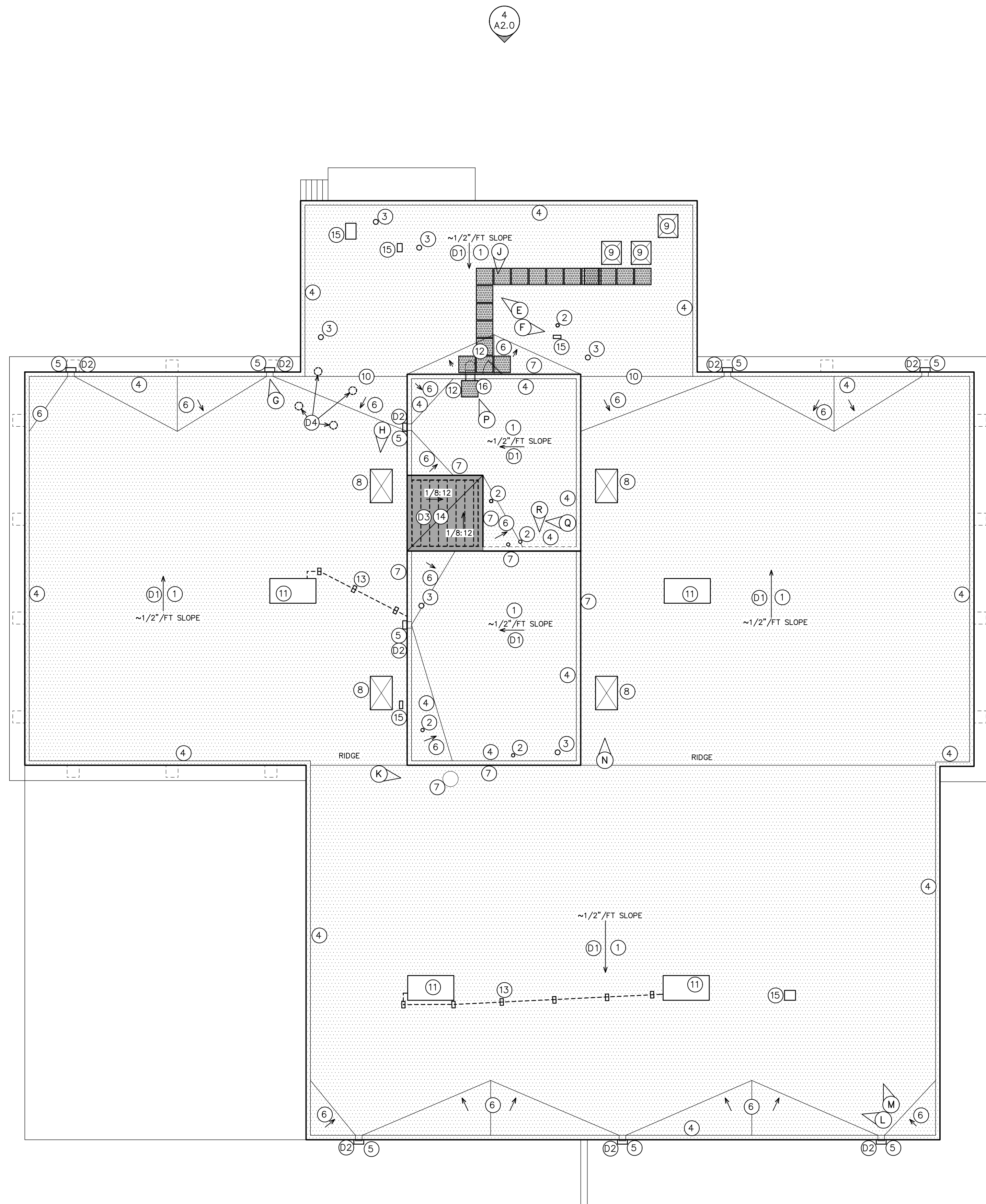
Δ

Copyright © 2026  
BY SDI ARCHITECTS + DESIGN

JOB # 2026003  
DRAWN MET  
CHECK BJ  
DATE 04/30/2026

Cover  
Index  
Location

G1.0



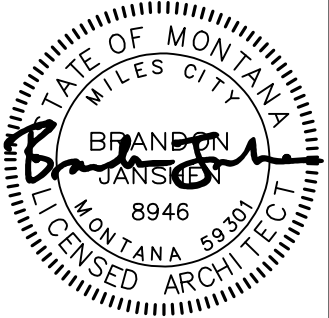
### ROOF PLAN NOTES

- ① 90 MIL FULLY ADHERED EPDM ROOF SYSTEM PER DETAILS AND SPECIFICATIONS
- ② FLASH PLUMBING VENT PER MEMBRANE MFR REQUIREMENTS. EXTEND TO 12" ABOVE FINISHED ROOF.
- ③ FLASH HOT VENT PER MEMBRANE MFR REQUIREMENTS.
- ④ FLASH TOP OF PARAPET PER DETAIL 2/A5.0. TYPICAL
- ⑤ PROVIDE NEW DOWNSPOUT AND CATCH BASIN PER DETAIL 3.A5.0 AND SPECIFICATIONS. INSTALL 4' HINGED LEADER AT THE BOTTOM EXCEPT DOWNSPOUTS TERMINATING ON ROOF WHICH GET AN ELBOW. INSTALL DOUBLE LAYER MEMBRANE UNDER BOTTOM OF DOWNSPOUT WHERE DOWNSPOUT TERMINATES ON ROOF SURFACE
- ⑥ EXISTING POURED IN PLACE CONCRETE CRICKETS TO BE REMOVED AND REPLACED WITH NEW 1/2"/FT TAPERED INSULATION CRICKETS.
- ⑦ TERM BAR UP WALL/DUCT 12" MIN PER DETAIL 4/A5.0.
- ⑧ EXTEND SKYLITE CURB AND REPLACE SKYLITE PER DETAIL 6/A5.0 AND FLASH PER MFR REQUIREMENTS AND SPECIFICATIONS. SKYLITE CURB SIZE 40"X61". FIELD VERIFY FOR CORRECT SKYLITE PRIOR TO ORDERING.
- ⑨ EXTEND HATCH CURB PER DETAIL 7/A5.0 AND FLASH PER MFR REQUIREMENTS AND SPECIFICATIONS.
- ⑩ FLASH TRANSITION PER DETAIL 5/A5.0 AND PER MFR REQUIREMENTS AND SPECIFICATIONS..
- ⑪ FLASH CURB AND ALL PIPING PENETRATIONS PER MFR REQUIREMENTS. UNITS TO BE REPLACED BY OTHERS INCLUDING NEW MANUFACTURED CURB.
- ⑫ PREMANUFACTURED EPDM WALK PADS AS SHOWN.
- ⑬ ADD NEW RUBBER PIPE SUPPORTS PER SPECIFICATIONS. ADD DOUBLE MEMBRANE UNDER EACH ONE.
- ⑭ FRAME IN AND COVER OPENING PER DETAIL 8, 9 & 10/A5.0.
- ⑮ EXTEND RECTANGULAR VENT DUCT UP 6" MIN. AND TERM BAR PERIMETER
- ⑯ FLASH OVER LADDER BRACES AS REQUIRED

### ROOF DEMO NOTES

- ⑰ REMOVE EXISTING GRAVEL BALLAST, MEMBRANE AND RELATED INSULATION, SCREWS, TERM BARS, EDGE METAL AND CONCRETE CRICKETS DOWN TO EXISTING CONCRETE DECK. SEE DETAIL 1/A5.0. CUT OFF ANY UNUSED CONDUIT STICKING UP.
- ⑱ CUT BACK EXISTING SCUPPER EXTENSIONS AS REQUIRED PER DETAIL 3/5.0.
- ⑲ EXSTING COVER, HOPPER AND UNIT INSIDE TO BE REMOVED BY OTHERS. CUT OFF ANY EXISTING BOLTS FLUSH.
- ⑳ GRIND AND BOLTS OR CONCRETE FLUSH WITH THE ROOF DECK PRIOR TO INSTALLING NEW ROOF SYSTEM EXISTING TOWER TO BE REMOVED BY OTHERS PRIOR TO RE-ROOF.

**1 - Roof Plan**  
 2026003\_PLN-ROOF  
 1" = 10'-0"  
 SEE SHEET A1.1 FOR IMAGES.



# Water Plant Re-Roof

City of Miles City  
 Miles City, MT

Revisions

Copyright © 2026  
 BY SDI ARCHITECTS + DESIGN

JOB # 2026003  
 DRAWN MET  
 CHECK BJ  
 DATE 04/30/2026

Roof  
 Plan  
 & Notes

A1.0

X:\Jobs - Plans\2026-2027\2026003 - Mt. Water Treatment - Plant Revamp\01\2026003\Sheet\A1.0 - Roof Plan.dwg 4/30/2026



A



B



C



D



E



F



G



H



J



K



L



M



N



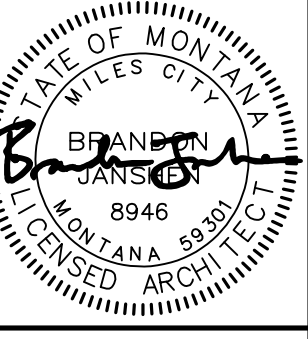
P



Q



R



# Water Plant Re-Roof

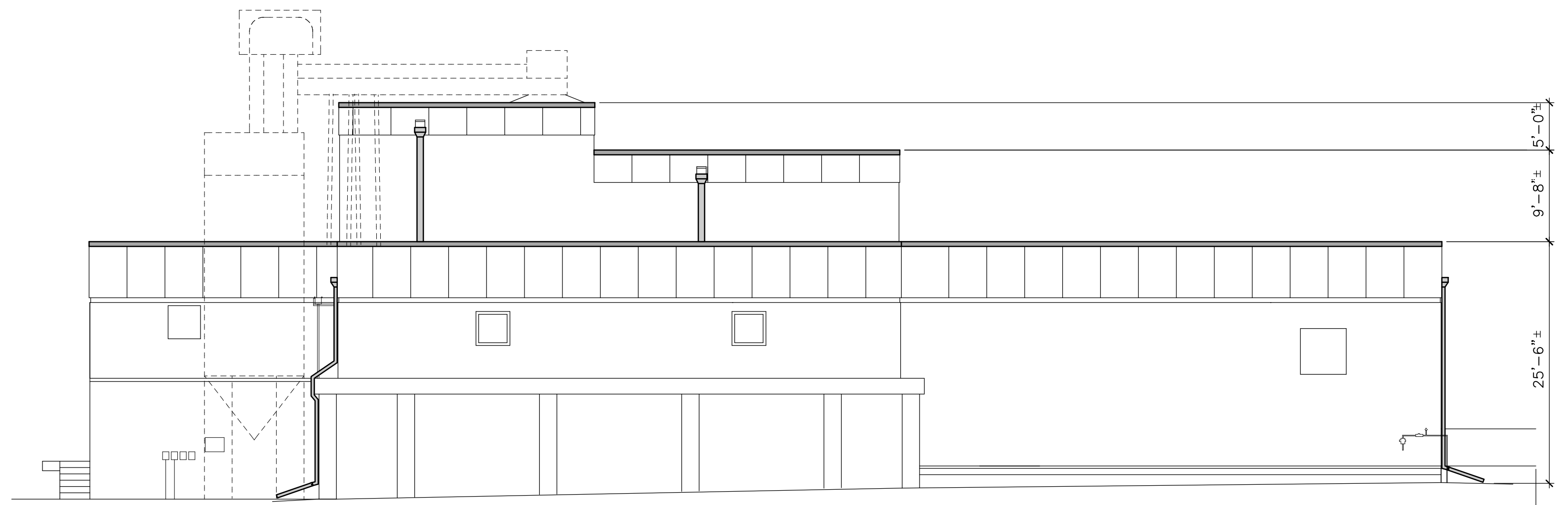
City of Miles City  
Miles City, MT

Revisions

Copyright © 2026  
BY SDI ARCHITECTS + DESIGN  
JOB # 2026003  
DRAWN MET  
CHECK BJ  
DATE 04/30/2026

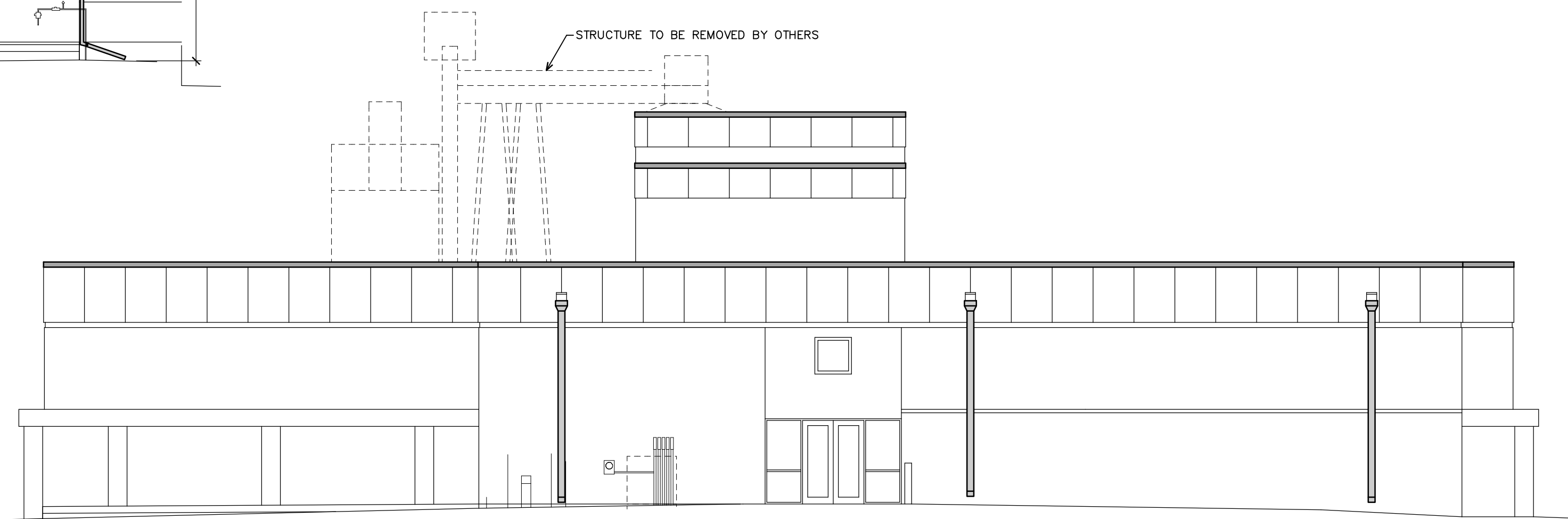
Roof  
Plan  
Images

4/29/2026  
A:\Jobs - Plans\2026-2027\2026003 - Mt. Water Treatment - Plans - Re-Roof\0100000000\Sheet A1.1 - Images



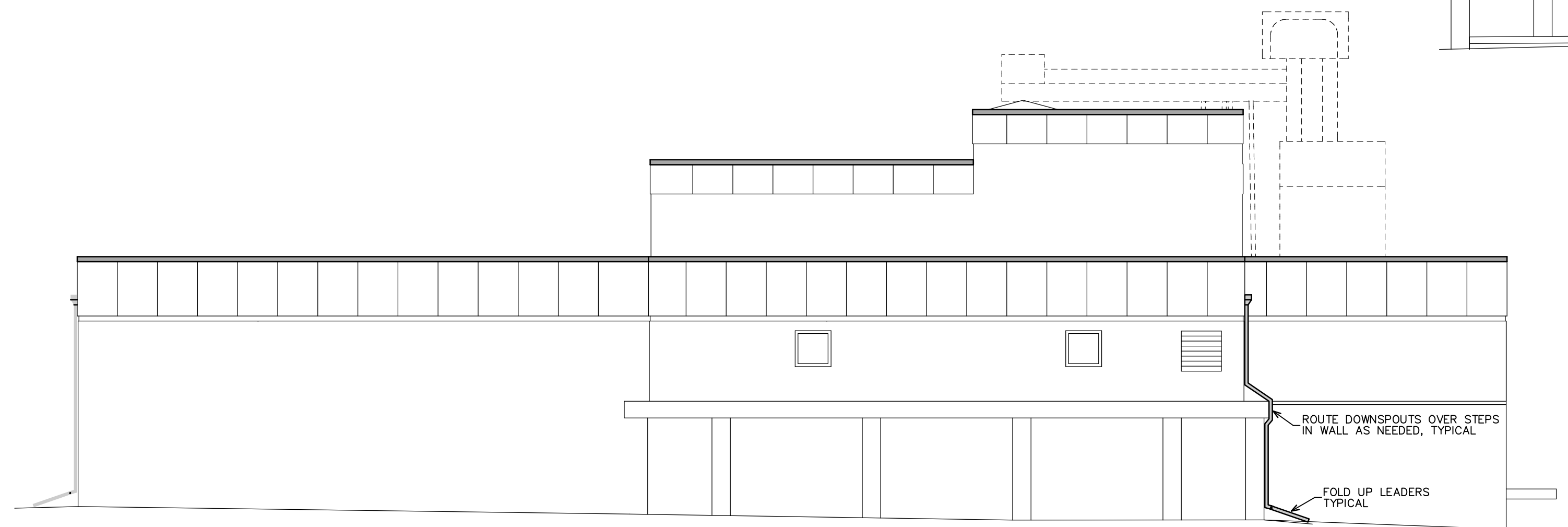
### 1 - West Elevation

2026003\_ELV 1" = 10'-0"



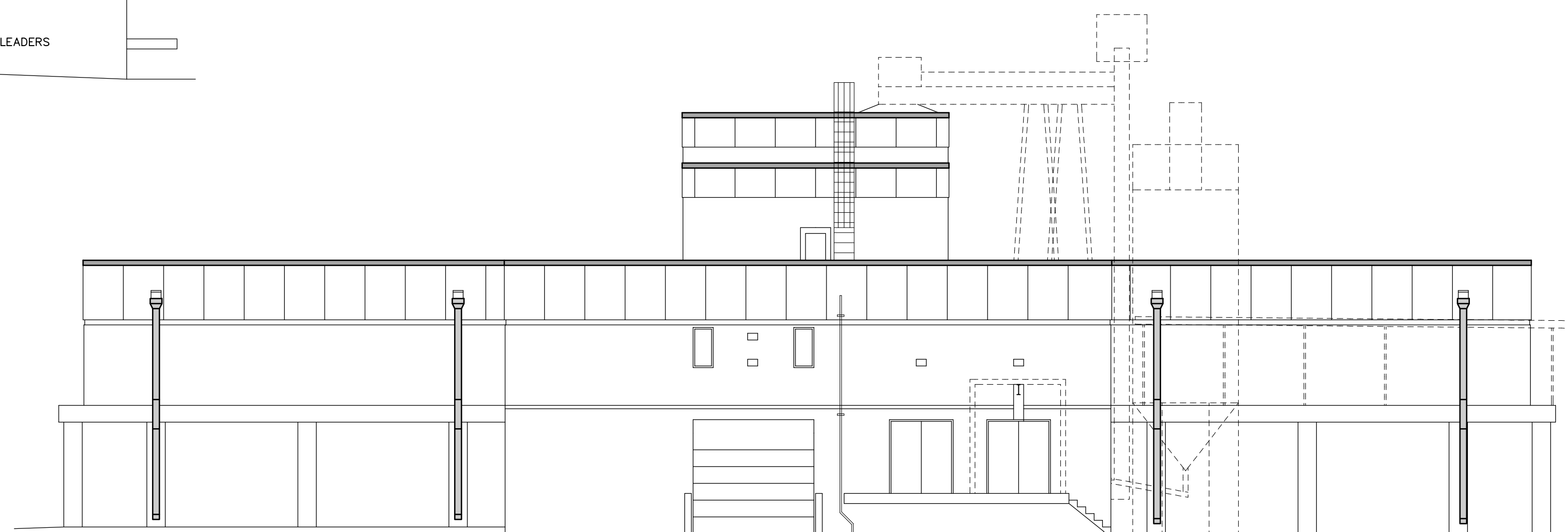
### 2 - South Elevation

2026003\_ELV 1" = 10'-0"



### 3 - East Elevation

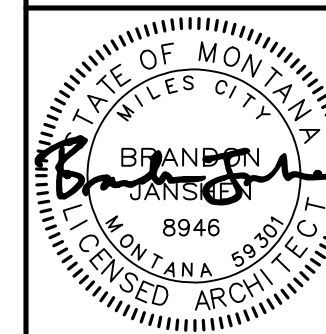
2026003\_ELV 1" = 10'-0"



### 4 - North Elevation

2026003\_ELV 1" = 10'-0"

sdi architects + design  
909 main street  
miles city, montana 59301  
406 . 234 . 0777



**Water Plant Re-Roof**  
City Of Miles City  
Miles City, MT

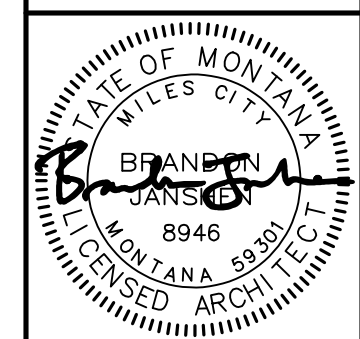
Revisions

Copyright © 2026  
BY SDI ARCHITECTS + DESIGN

JOB # 2026003  
DRAWN MET  
CHECK BJ  
DATE 04/30/2026

Exterior Elevations

A2.0



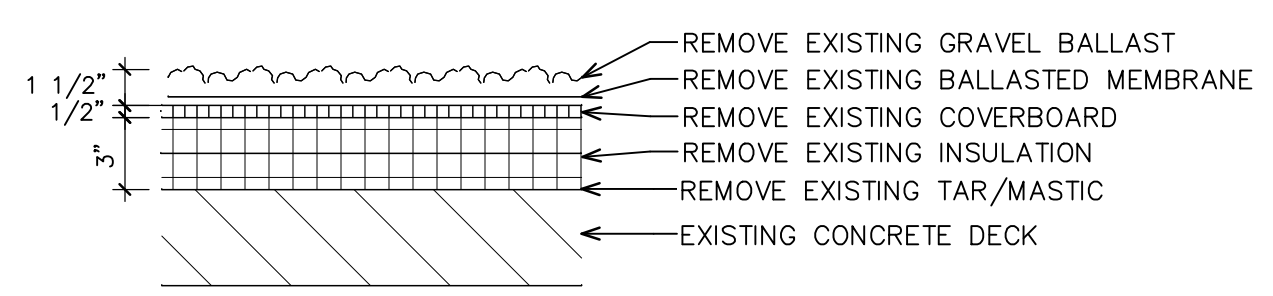
Revisions  
 \_\_\_\_\_  
 \_\_\_\_\_  
 \_\_\_\_\_

Copyright © 2026  
 BY SDI ARCHITECTS + DESIGN

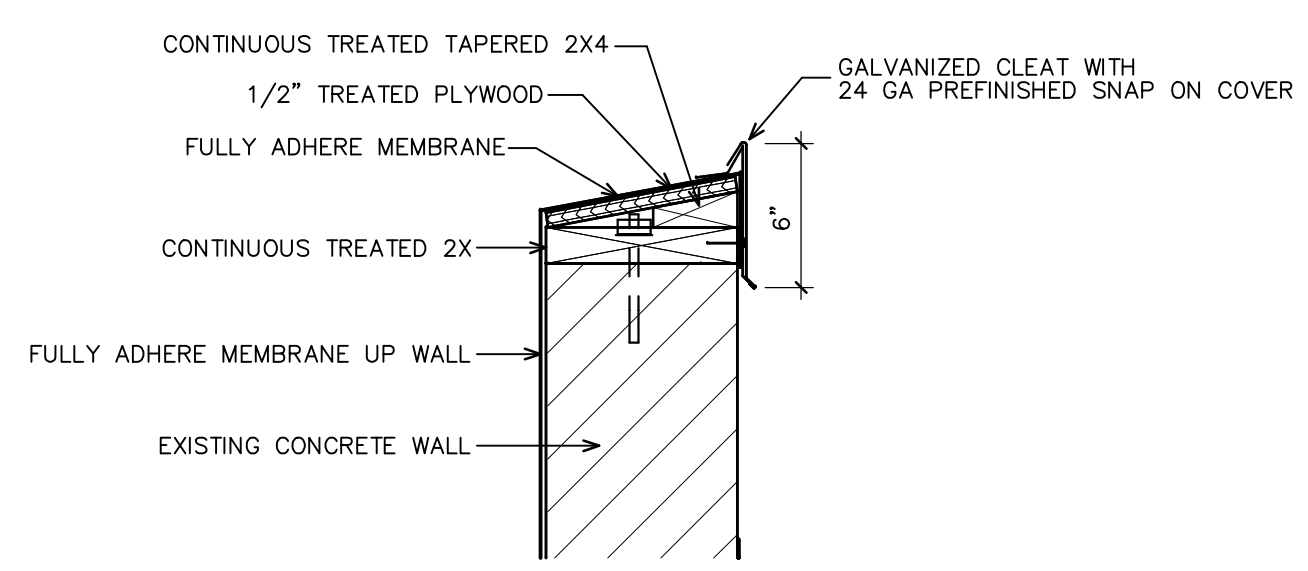
JOB # 2026003  
 DRAWN MET  
 CHECK BJ  
 DATE 04/30/2026

Roof  
 Details

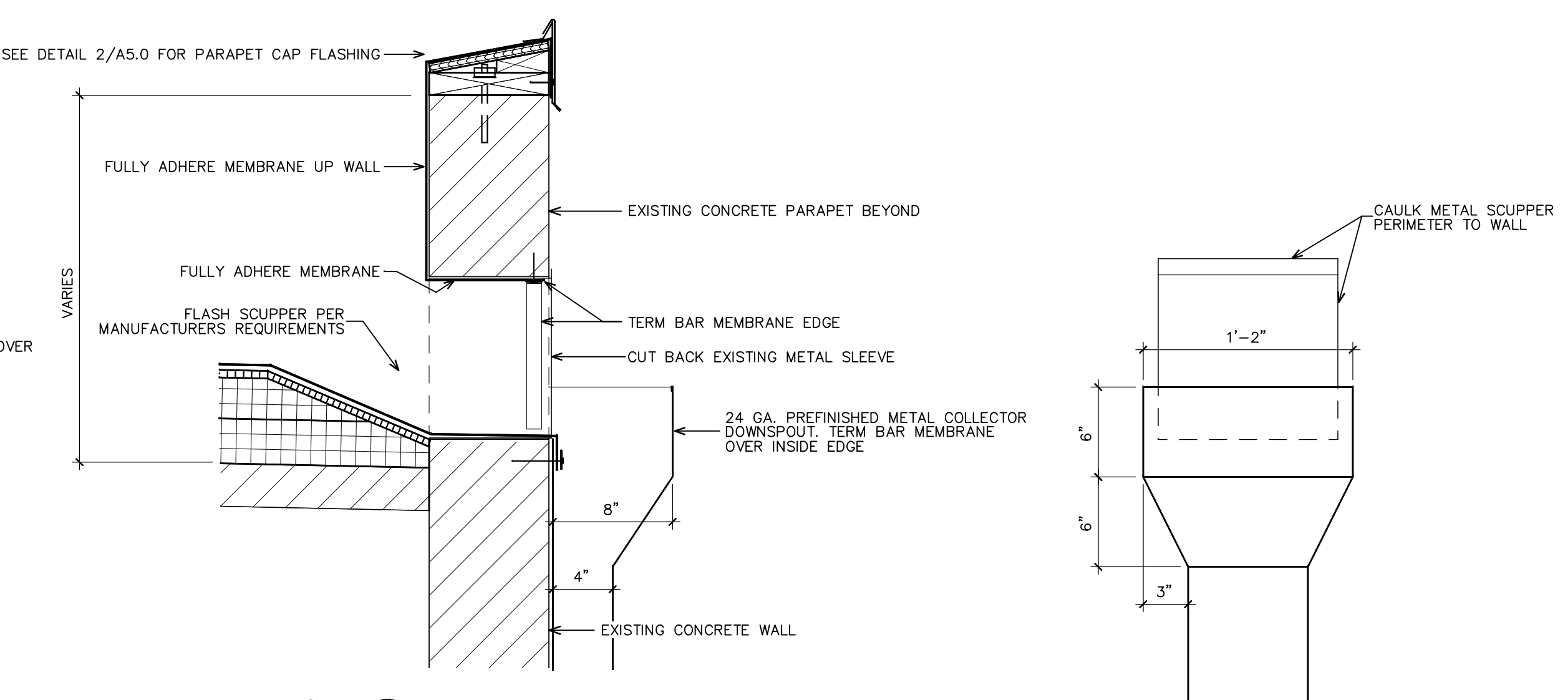
**A5.0**



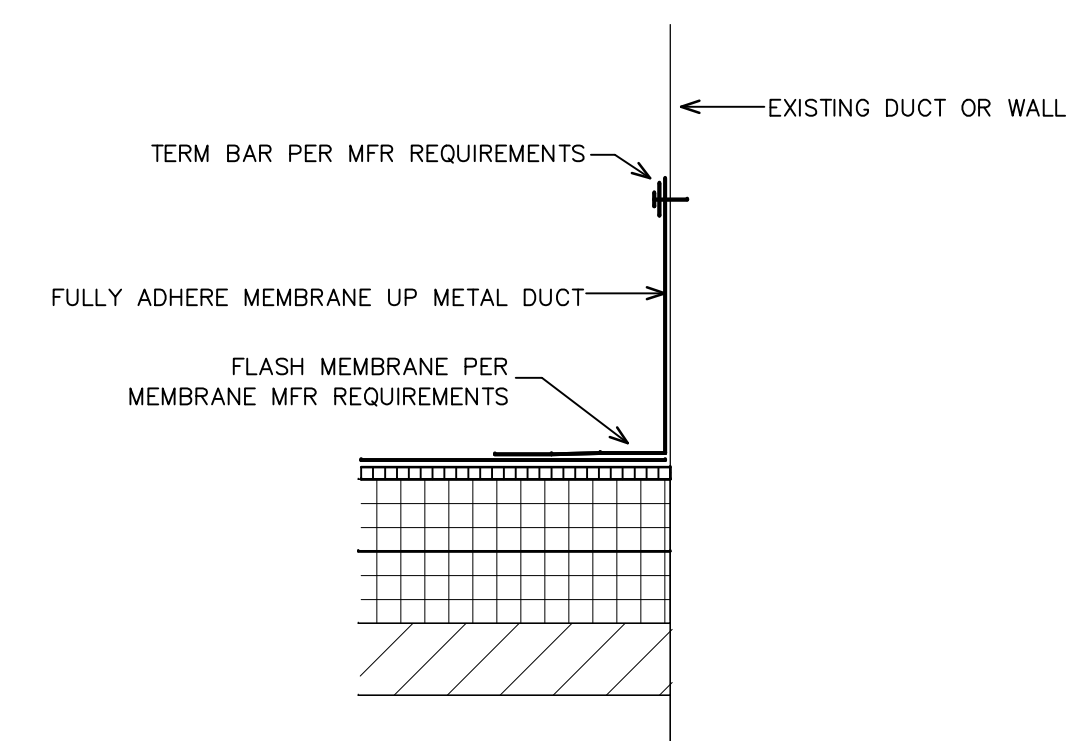
**1- Existing Roof Construction**  
 1865DET-ROOF 030419 1 1/2" = 1'-0"



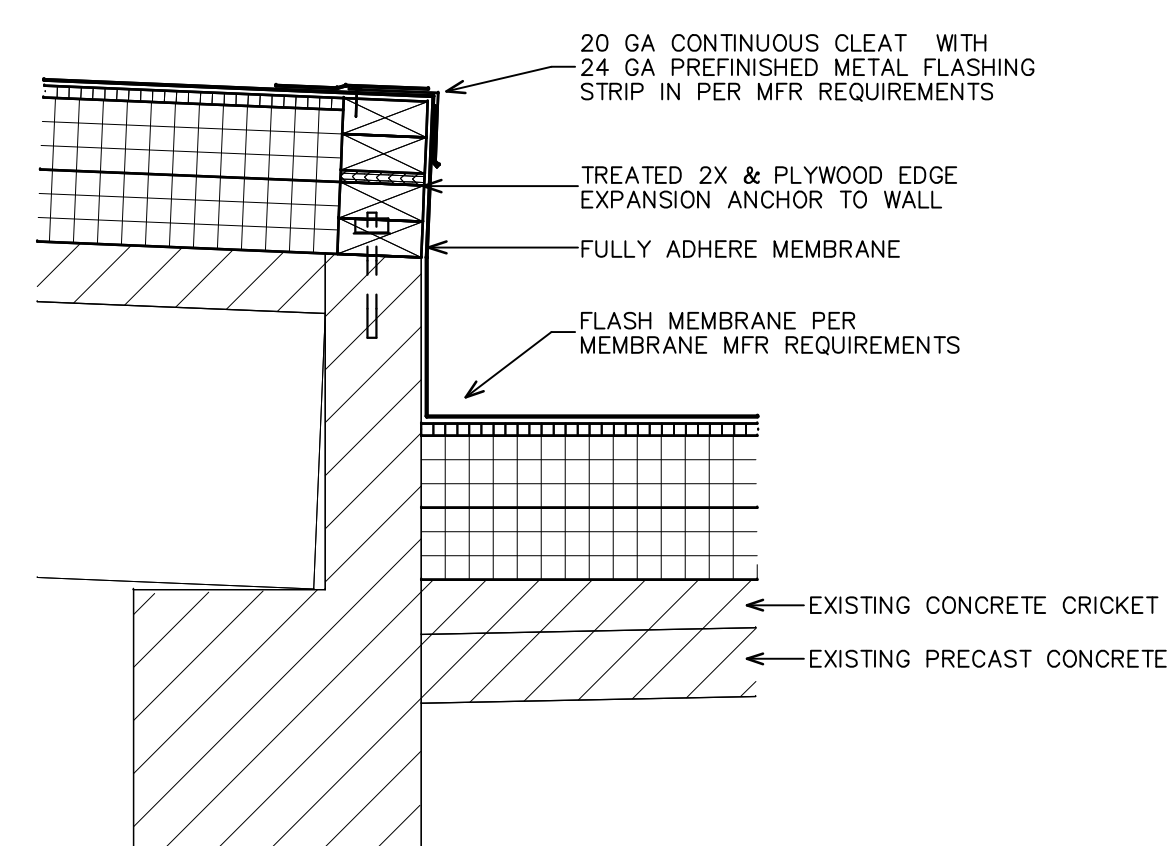
**2- Parapet Cap**  
 2026003\_DET\_ROOF 1 1/2" = 1'-0"



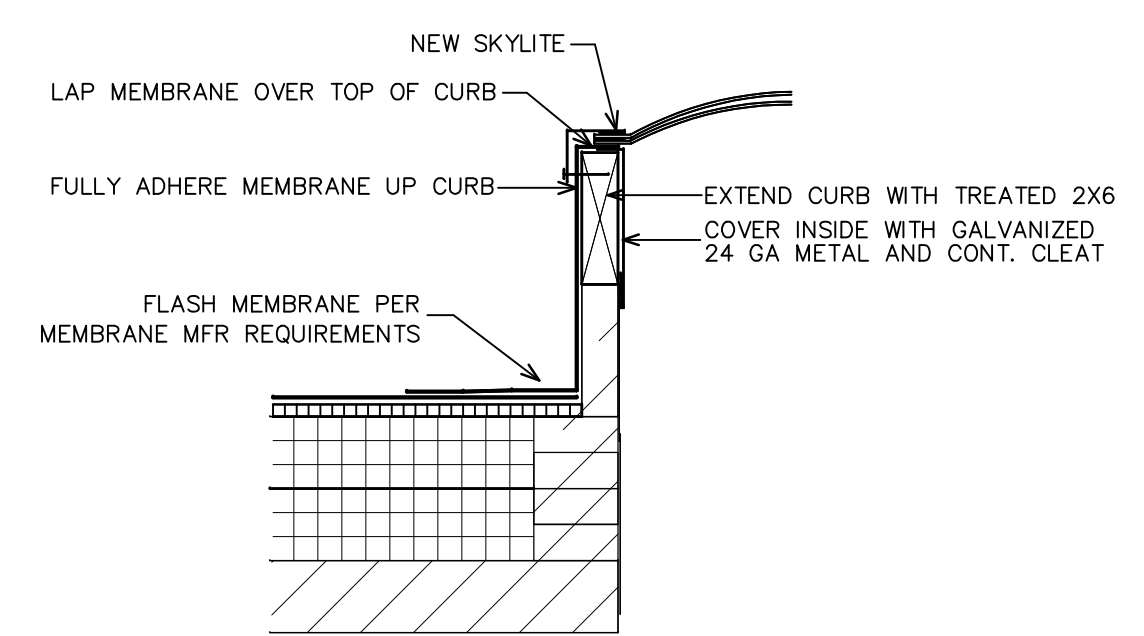
**3- Scupper**  
 2026003\_DET\_ROOF 1 1/2" = 1'-0"



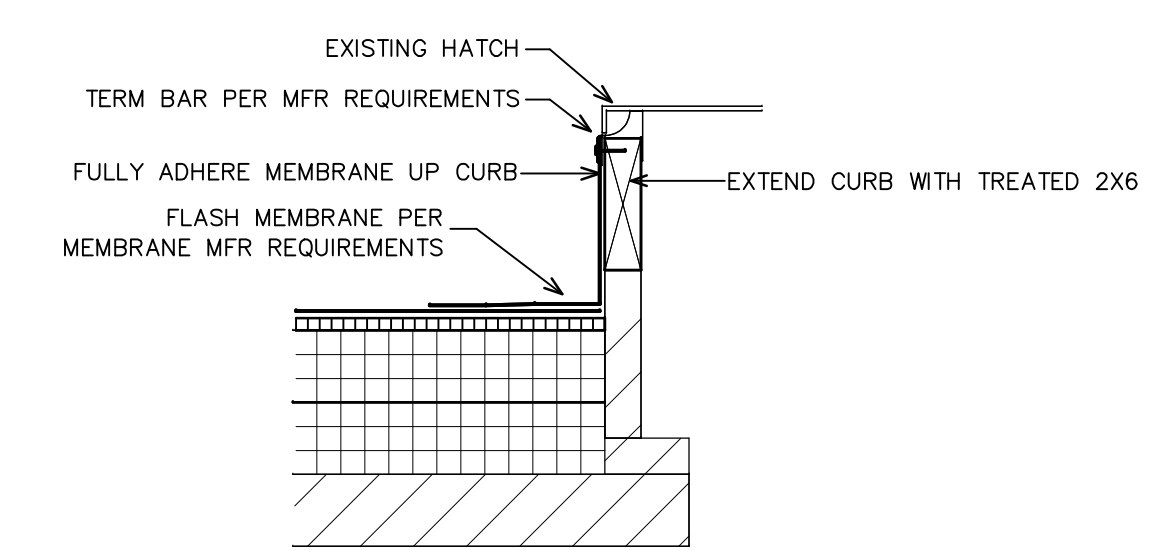
**4- Duct Penetration/Wall**  
 2026003\_DET\_ROOF 1 1/2" = 1'-0"



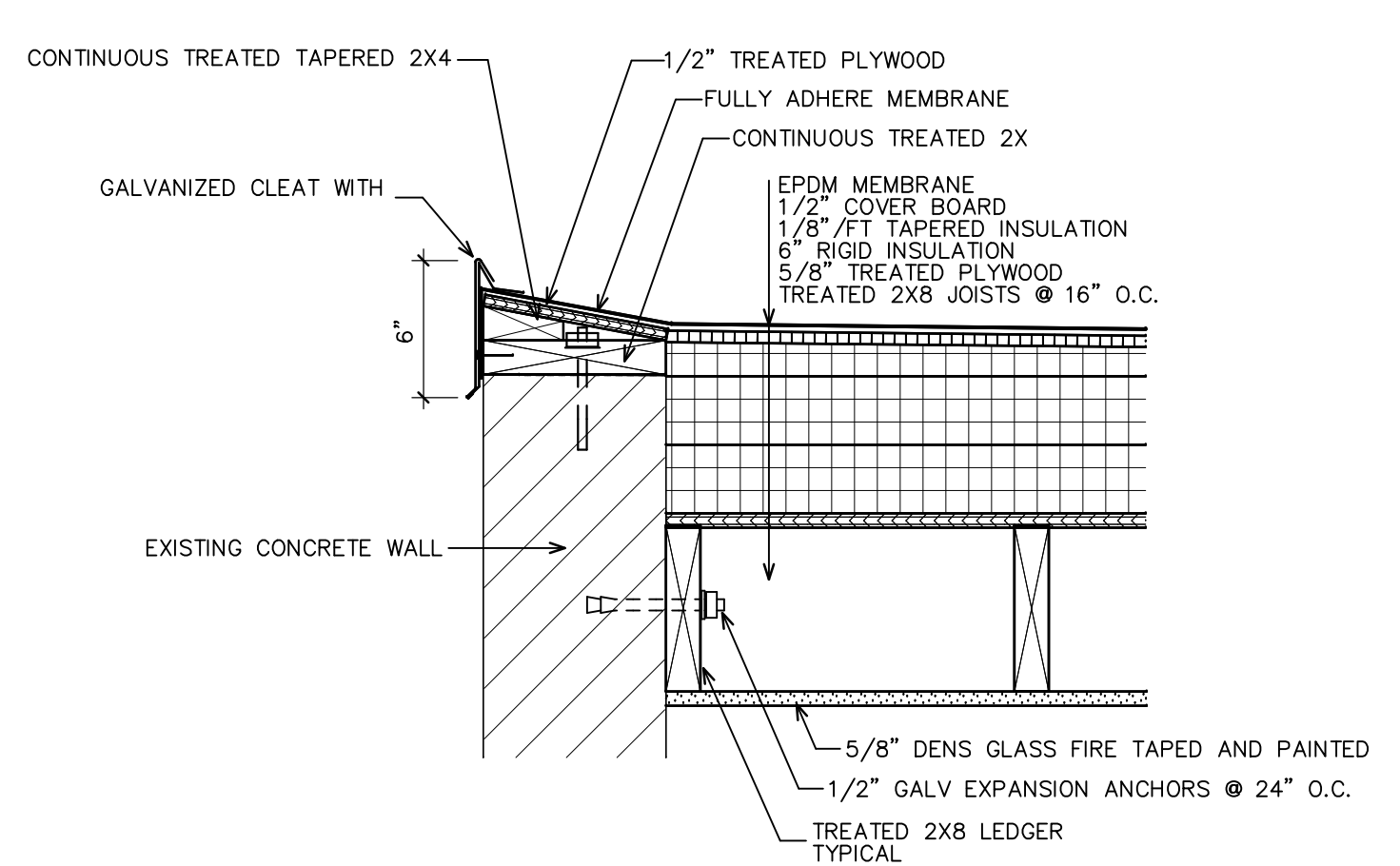
**5- Roof Step**  
 2026003\_DET\_ROOF 1 1/2" = 1'-0"



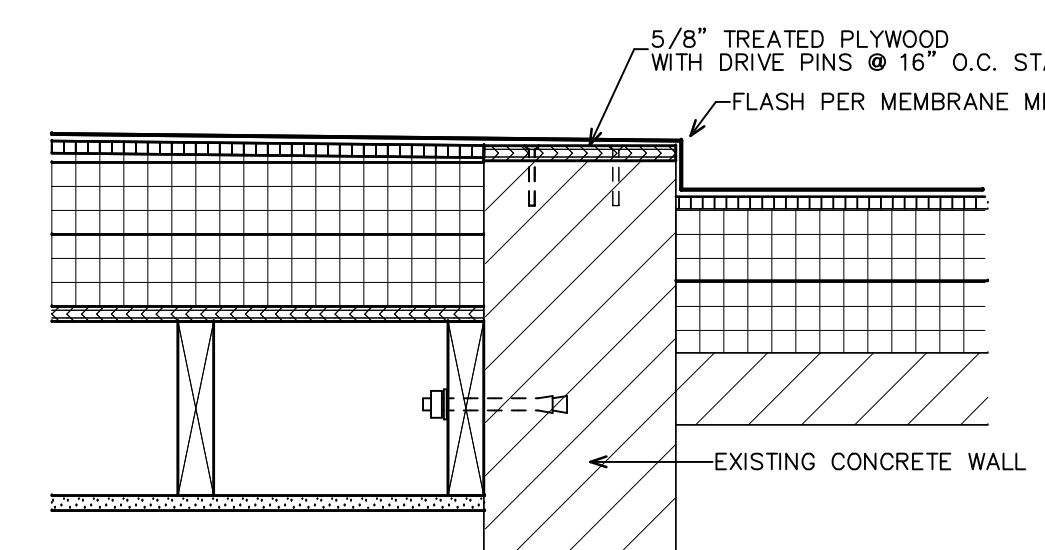
**6- New Skylite Detail**  
 2026003\_DET\_ROOF 1 1/2" = 1'-0"



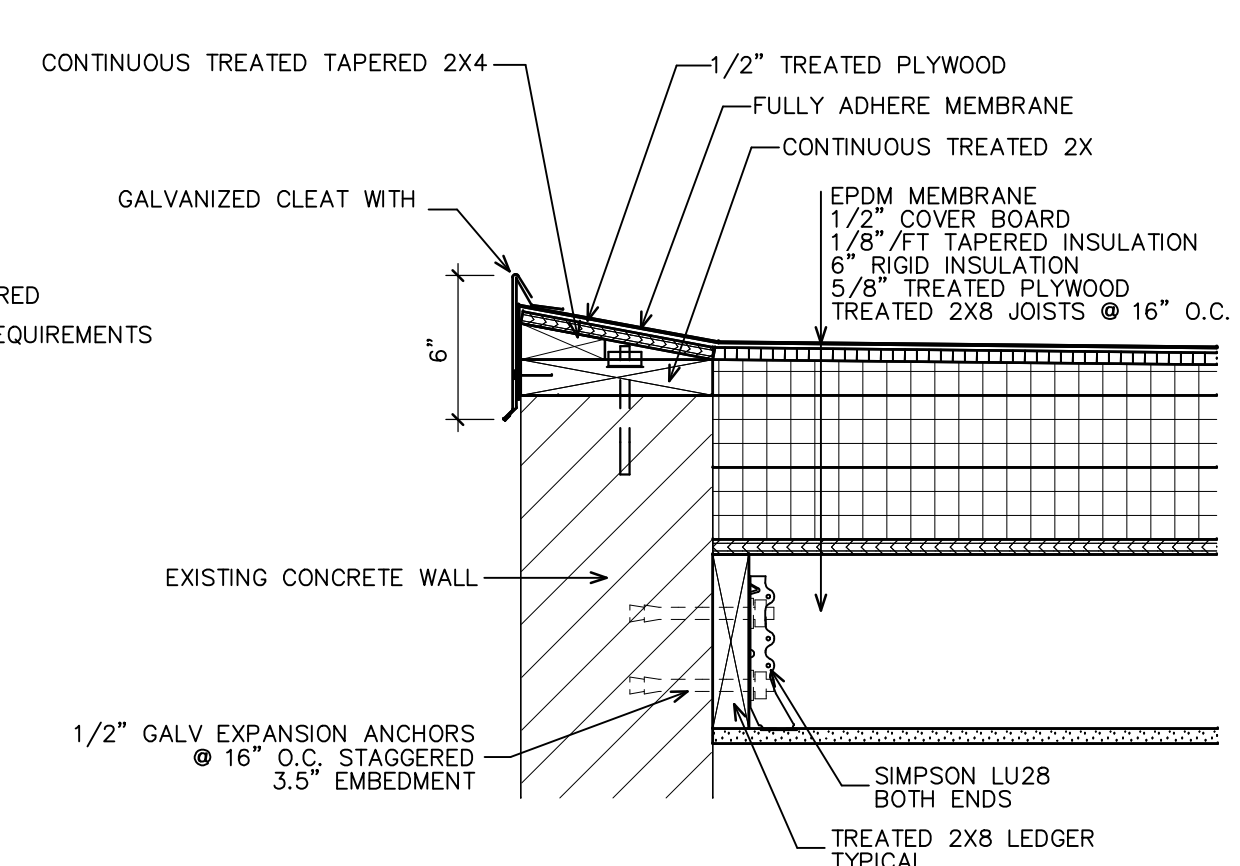
**7- Hatch Extension**  
 2026003\_DET\_ROOF 1 1/2" = 1'-0"



**8- Roof Infill (West Edge)**  
 2026003\_DET\_ROOF 1 1/2" = 1'-0"



**9- Roof Infill**  
 2026003\_DET\_ROOF 1 1/2" = 1'-0"



**10- Roof Infill (South Edge)**  
 2026003\_DET\_ROOF 1 1/2" = 1'-0"

A: Job File 2026-2026003-04050003 - Mt. Water Treatment Plant Re-Roof (2026003) (Sheet) A5.0 - Roof Details 4/30/2026