

ADDENDUM NO. 5  
TO GENERAL, MECHANICAL AND ELECTRICAL  
ABERDEEN PUBLIC WORKS  
MAINTENANCE BUILDING  
ABERDEEN, SOUTH DAKOTA

Addendum Dated: March 26, 2026

Original Plans and Specifications Dated: February 20, 2026

NOTE: The Plans, details and accompanying specifications shall be amended as follows, but where any article is amended the original article shall remain in effect and shall become a part of the original plans and specifications.

A. GENERAL NOTES:

1. Delete Sunshades over doors 210E, 210F, 210G, 210H, 210J, 210D, 217D, & 218H. Shown on the West side of the pre-engineered metal building, and above door 218H on the East side of the pre-engineered metal building. Replace with attached sunshade detailed on 1/1.

B. PLAN CHANGES AND CLARIFICATIONS:

1. Sheet S9:

- a) Detail 18/S9, delete “16” O.C.”, and replace with “12” O.C.”.
- b) Detail 20/S9, delete “16” O.C.”, and replace with “12” O.C.”.

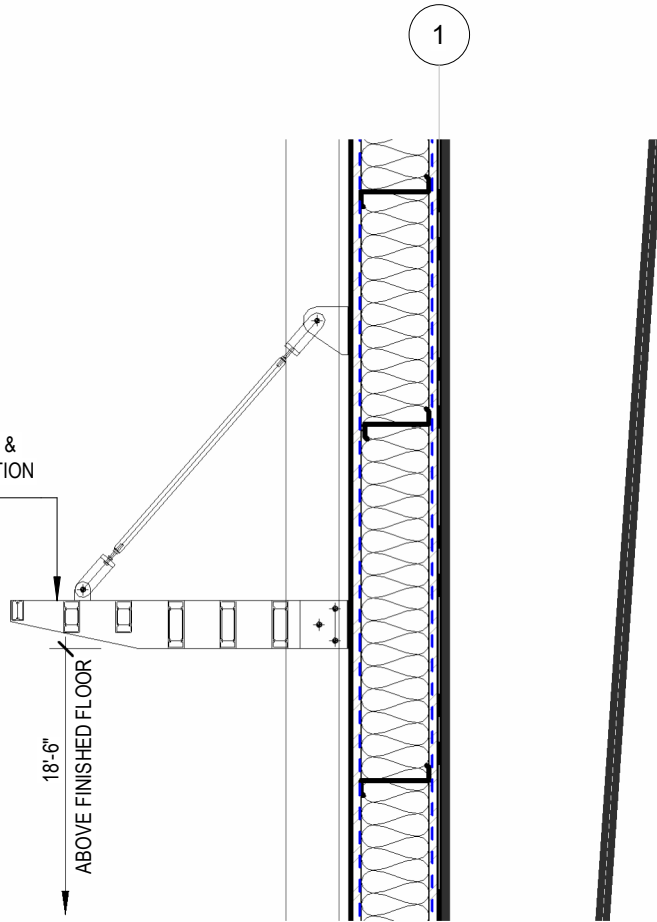
C. SPECIFICATION CHANGES AND CLARIFICATIONS:

1. Section 10 71 13–Aluminum Sun Control Devices
  - a) Add section in its entirety, see attached two pages.

D. APPROVED EQUALS:

1. Section 07 52 19 – EPDM Membrane Roofing: MuleHide 60 mil EPDM roof system.

ARCHITECTURAL GRILLES &  
SUNSHADES CONSTELLATION  
SERIES ORION-42"



① SUNSHADE CANOPY  
1/2" = 1'-0"



REVISED DATE	<b>Plans for</b> Aberdeen Public Works Maintenance Building Aberdeen, South Dakota	Addendum 5	DRAWN BY <u>CW</u>	1  OF- 1
CERT. NO.			TRACED BY ____  CHECKED BY <u>DM</u>	
HKG Architects, Inc.		Aberdeen, S.D.		

**SECTION 10 71 13 – ALUMINUM SUN CONTROL DEVICES**

PART 1 - GENERAL

1.1 Summary

A. This section includes products to assist in controlling the effects of the sun.

B. Related work specified elsewhere

1. Sheet Metal Work Section

C. Work included in this section.

The extent of the extruded aluminum sunshade system is shown on the contract drawings and hereby defined to include all sunshade devices of the type shown and specified herein.

1.1 Industry Standard

A. Reference:

Products and executions are specified in this section by reference to the following industry and/or trade specifications or standards of the following:

National Association of Architectural Metal Manufacturers (NAAMM), the Aluminum Association (AA), American Architectural Manufacturers Association (AAMA).

1.2 Qualifications

A. Manufacturers:

a. AGS Constellation Series, Orion - 42 inch

For the purpose of designation type and quality for the work under this section, drawings and specifications are based on the products manufactured by Architectural Grilles and Sunshades, Inc. (AGS, Inc.); 22442, Fey Drive, Frankfort, IL 60448. Phone: (708) 479-9458, Fax: (708) 479-9478.

Email: Nathan.s@agsshade.com

b. Additional Acceptable Manufacturers:

Subject to compliance with these specifications, products as manufactured by:

1. Pittco Architectural Metals

2. Active Glass Co.

c. Approved equals by submission.

1.3 Submittals:

A. Product data: Manufacturers technical and descriptive data.

B. Shop Drawings:

a. Submit for architect's approval prior to commencement of any work or fabrication under this section, a digital set of detail shop drawings showing all areas of work profiles and sections of all components, finishes and fastening details.

C. Structural Calculations: submit comprehensive analysis of design loads, dead, live, snow, wind and thermal movements. Calculations shall be stamped and signed by a professional engineer registered in the jurisdiction where the project is located.

D. Warranties:

a. The work in this section shall be guaranteed against defects in material and workmanship for a period of one (1) year from date of acceptance of the building. Contractor shall replace and repair any defects at no cost to the owner.

1.4 Components:

A. Shipping and Handling:

Deliver materials to the job site ready for erection. Assembled units to be packaged and shipped to prevent damage during freight and storage on site.

PART 2 - PRODUCTS

2.1 Materials:

A. General: Metal shall be free from defects impairing strength, durability, or appearance.

1. Aluminum – ASTM B 221, alloys 6063-T5 and 6063-T6 for extrusions. ASTM B 209, alloys 5052-H32 or greater.

2. Fasteners – Unless otherwise noted, fasteners shall be 300 series non-magnetic stainless steel. ASTM A-307, grade A or better

## 2.2 Components:

- A. Sunshades component shall be 6063 T5 extruded aluminum AGS, Inc.
- B. Outriggers shall be 6063 T5 extruded aluminum AGS, Inc.
- C. Fascia shall be 6063 T5 extruded aluminum AGS, Inc.
- D. Components shall be shop assembled in large practical sections to allow for immediate erection.

## 2.3 Aluminum Finish:

- A. Class I, clear anodic finish: AA-M12C22A41 (Mechanical Finish: Chemical finished: etched, medium matte; anodic coating: Architectural class I, clear coating 0.018 mm or thicker) complying with AAMA 607.1.

## PART 3 - EXECUTION:

### 3.1 Field Dimensions:

- A. Verify conditions: Examine areas where work is to be performed and identify any conditions that could be detrimental to proper or timely completion.
- B. General Contractor Shall field confirm openings and elevations as shown on shop drawings prior to fabrication.
- C. Installation should not proceed until all conditions are satisfactory.

### 3.2 Erection:

- A. Qualified installer needs to comply with manufacturer's installation instructions.
- B. Verify all dimensions and the supporting structure and provide accurate field measurements, so that the sunshades will be properly designed, fabricated, and fitted to the structure.
- C. Anchor Sunshade to the building per the architectural drawings.
- D. A maximum of +/- 1/8" tolerance between any column to column spacing is acceptable.
- E. Do not cut or trim any Sunshade components without written approval by AGS, Inc.
- F. Do not erect any damaged or deformed members. Remove or replace any damaged members in the erection process as directed by AGS, Inc.
- G. Set Sunshade units level, plumb, with uniform joints.

Qualified installer to erect after all adjacent painting, roofing and masonry has been completed.

### 3.3 Cleaning:

Clean exterior Sunshades surfaces to prevent buildup of dust and debris, refer to AGS, Inc. cleaning instructions based on the finish of the material

### 3.4 Protection:

Protect Sunshade materials after installation to prevent damage by other tradespersons.

END OF SECTION 10 71 13