

FINISH SCHEDULE

ROOM	FLOOR	BASE	FULL HEIGHT	WALLS			CEILING/ EXPOSED STRUCTURE	REMARKS
				HEIGHT	WAINSCOT BOTTOM	TOP		
T/ SLAB F.F.								
WAITING	F-2	B-1	PR-3/PT-5	PER INT. ELEV.	PL-1	PR-3/PT-3	PR-3/PT-3	SEE INTERIOR ELEVATIONS FOR WAINSCOT
BAY 1	F-1	B-2	PR-3/PT-5	PER INT. ELEV.	PL-1	PT-5	PR-3/PT-5	SEE 3/A-7 FOR WAINSCOT DETAIL
BAY 2	F-1	B-2	PR-3/PT-5	PER INT. ELEV.	PL-1	PT-5	PR-3/PT-5	SEE 3/A-7 FOR WAINSCOT DETAIL
BAY 3	F-1	B-2	PR-3/PT-5	PER INT. ELEV.	PL-1	PT-5	PR-3/PT-5	SEE 3/A-7 FOR WAINSCOT DETAIL
BAY 4	F-1	B-2	PR-3/PT-5	PER INT. ELEV.	PL-1	PT-5	PR-3/PT-5	SEE 3/A-7 FOR WAINSCOT DETAIL
DRUM TRANSFER STATION	F-1	B-2	PR-3/PT-5	N/A	N/A	N/A	PR-3/PT-3	N/A
UTILITY	F-3	B-1	PR-3/PT-5	PER INT. ELEV.	PL-1	PR-3/PT-5	PR-3/PT-3	SEE INTERIOR ELEVATIONS FOR WAINSCOT
OFFICE	F-2	B-1	PR-3/PT-5	PER INT. ELEV.	PL-1	PR-3/PT-5	PR-3/PT-3	SEE INTERIOR ELEVATIONS FOR WAINSCOT
UNISEX	F-2	B-1	PR-3/PT-5	PER INT. ELEV.	PL-1	PR-3/PT-5	PR-3/PT-3	SEE INTERIOR ELEVATIONS FOR WAINSCOT
MECHANICAL	F-3	B-1	PR-1/PT-5	N/A	N/A	N/A	PR-2/PT-5	N/A
ACCESS CHASE	N/A	N/A	N/A	N/A	N/A	N/A	N/A	N/A
ACCESS CHASE	N/A	N/A	N/A	N/A	N/A	N/A	N/A	N/A
T/ SLAB B.F.F.								
LUBE PIT	F-3	B-1/B-2	PR-1/PT-5	N/A	N/A	N/A	PR-2/PT-5	N/A
BREAK AREA	F-3	B-1	PR-1/PT-5	N/A	N/A	N/A	PR-2/PT-5	N/A
CHANGING ROOM	F-3	B-1	PR-1/PT-5	N/A	N/A	N/A	PR-2/PT-5	N/A

ITEM	FINISH	REMARKS	NOTES:
EXPOSED STEEL AT LUBE PIT OPENINGS	"VALVOLINE RED" SEE SPEC 9901	WIRE BRUSH RUST SPOTS PRIOR TO PRIMING.	1. ANY MOISTURE PROBLEMS SUCH AS ROOF LEAKS, IMPROPER GRADING, ETC. MUST BE CORRECTED PRIOR TO PAINT APPLICATION. 2. CLEAN & PREPARE ALL SURFACES ACCORDING TO COATING MFG. RECOMMENDATIONS. 3. ALL GALVANIZED SURFACES SHALL BE CLEANED WITH SOLVENT AS RECOMMENDED BY MFG. PRIOR TO PRIMING AND PAINTING W/ MTL. PRIMERS. RUSTED AREAS SHOULD BE PREPARED PER SSPC-SP2 OR SP3 HAND OR POWER TOOL CLEANING & PRIMED WITH PR-2 PRIOR TO APPLICATION OF SPECIFIED FINISH COATS. 4. ALL SURFACES SHALL RECEIVE (2) APPLICATIONS OF TOP COAT, APPLIED ACCORDING TO MFG. RECOMMENDATIONS. 5. ENTIRE DOOR & FRAME SHALL BE PAINTED ONE COLOR AS NOTED. 6. ALL WELDS SHALL BE GROUND SMOOTH PRIOR TO PRIME COAT. 7. ALL EXPOSED LINTELS SHALL BE PAINTED THE SAME COLOR AS THE DOOR FRAME AT MAN DOORS AND TO MATCH THE DESERT SAND METAL COLORS AT ALL OTHER EXPOSURES.
EXPOSED STEEL AT STAIR	"VALVOLINE RED" SEE SPEC 9901	WIRE BRUSH RUST SPOTS PRIOR TO PRIMING.	
STAIR RAIL	"VALVOLINE RED" SEE SPEC 9901	WIRE BRUSH RUST SPOTS PRIOR TO PRIMING.	

FINISH LEGEND

Mark	Color	Finish	Manufacturer	Product
Primers:				
PR-1	Tinted to match		Sherwin Williams	Heavy Duty Block Filler B42W46
PR-2	Tinted to match		Sherwin Williams	Pro-Cryl Primer B66-310 Series
PR-3	Tinted to match		Sherwin Williams	Prep-Rite 200 Prim or B28W200
Paints:				
PT-1	SW7012 (Creamy)	Gloss	Sherwin Williams	Water Base Industrial Enamel B66-300 Series
PT-2	SW7515 (Homestead Brown)	Gloss	Sherwin Williams	Sher-Cryl HPA B66-300 Series
PT-3	Ceiling White	Gloss	Sherwin Williams	Water Base Industrial Enamel B66-300 Series
PT-4	Valvoline Red	Gloss	Sherwin Williams	Water Base Industrial Enamel B66-300 Series Color to match Pantone 485 RED
PT-5	Ultra White	Gloss	Sherwin Williams	Water Base Industrial Enamel B66-300 Series
Wall Panels:				
W-1	(not used)			
W-2	Black	Ceramic Wall Tile Wainscot	As approved by Owner	Include Schluter trim at top of wainscot and all outside or exposed corners
Plastic Laminate:				
PL-1	Dove Grey	Matte	Wilsonart	Standard HPL Finish D92-60
Floor Finish:				
F-1	See Finish Note F		Silkal / Sherwin Williams	By Owner; Seamless, Resinous System - See Finish Note F
F-2	Black	Ceramic Tile	As approved by Owner	Include Schluter trim at all outside or exposed corners
F-3	Clear	High Gloss	MastureKure	By Owner; MastureKure CC 300, 3 Coats, Min. See Finish Note E
Base:				
B-1	Black	Ceramic Wall Tile	As approved by Owner	Include Schluter trim at all outside or exposed corners
B-2	See Finish Note C		Silkal	By Owner; Seamless, Resinous System
Solid Surface:				
SS-1	Baja Melange	#9030 ML	WilsonArt	Gibraltar (Window Sills)

FINISH NOTES

A. W-1 FINISH SHALL BE LOCALLY SOURCED FIBERGLASS REINFORCED PANELS. USE B-1 BASE W/ THIS WALL FINISH.

B. (NOT USED)

C. (NOT USED)

D. INSIDE OF ALL VERTICAL CHASES TO BE PAINTED PT-5.

E. PROVIDE LIGHT BROOM FINISH @ CONCRETE SURFACES SCHEDULED TO RECEIVE F-3.

F. F-1 SHALL BE A SEAMLESS, RESINOUS QUARTZ FLOORING SYSTEM AS MANUFACTURED BY SILKAL OR DUR-A-FLEX. QUARTZ FLOORING SYSTEM SHALL CONSIST OF 61 00 SELF-LEVELING BLACK SURFACE COAT, FOLLOWED BY BROADCAST COAT (70% BLACK, 10% BLUE, 10% GREY, 10% WHITE), FOLLOWED BY TWO TOPCOATS OF R71 SEALER. INTEGRAL BASE IS INCLUDED AS PART OF THIS FLOORING SYSTEM. PROVIDE YELLOW CAUTION STRIPING AND BLUE END-OF-BAY MARKING INTEGRAL W/ FLOOR FINISH - SEE FLOOR PLAN. PAINT TO BE SHERWIN WILLIAMS, PROPARK WATERBORNE TRAFFIC PAINT - BLUE. FOR PRICING, DISTRIBUTION, AND INSTALLATION, CONTACT THE FOLLOWING: *JOHN COTHARAN (SILKAL) (864) 328-4572

*MATTHEW SIMPKINS (DUR-A-FLEX) (317) 690-4696
*GREG SOLTIS (RES-TEK) (404) 805-6494

GENERAL NOTES

A. INTERIOR WALLS SURROUNDING RESTROOMS AND OFFICE SHALL BE PROVIDED W/ SOUND BATT INSULATION TO EXTEND FULL HEIGHT TO INSULATED CEILINGS, TRUSS, OR JOIST SPACE TO ACHIEVE VIQC ACCEPTABLE SOUND ENCLOSURE. VAPOR BARRIER IS NOT REQUIRED IN THESE WALL. EXTERIOR WALLS PER R-VALUES REQUIRED. REFER TO SHEET A-4.

B. ALL EXTERIOR WALLS & AREAS ABOVE CEILINGS (JOIST & TRUSS SPACES) SHALL BE PROVIDED WITH BATT INSULATION TO ACHIEVE A COMPLETELY INSULATED THERMAL ENVELOPE AS REQUIRED. PROVIDE VAPOR BARRIER PER LOCAL CLIMATE REQUIREMENTS. BLOW-IN INSULATION IS UNACCEPTABLE.

C. ALL GYPSUM BOARD IN SERVICE BAYS AND STORAGE AREA SHALL BE 5/8" HIGH ABUSE FIRE SHIELD BY NATIONAL GYPSUM.

D. ALL WALLS EXTENDING TO UNDERSIDE OF TRUSSES SHALL BE BRACED TO STRUCTURE AS REQUIRED. PROVIDE NECESSARY BLOCKING FOR STABLE, SECURE INSTALLATION.

E. REFER TO SHEET A-1 FOR EQUIPMENT SCHEDULE.

F. DIMENSIONS FOR INTERIOR WALLS ON PLANS ARE TO ROUGH FRAMING (U.N.O.) EXTERIOR DIMENSIONS ARE TO FINISHED SURFACES AND OPENINGS.

G. VALVOLINE INSTANT OIL CHANGE DOES NOT PERFORM WORK ON VEHICLE FUELING SYSTEMS. IN THE CASE A FUEL SYSTEM IS IN NEED OF REPAIR, VALVOLINE EMPLOYEES ARE TO INSTRUCT VEHICLE OWNERS TO TAKE THE VEHICLE TO A LOCAL REPAIR STATION OFF PREMISES.

H. REFER TO SHEET S-3.1 FOR FLOOR PENETRATION LOCATIONS.

J. POLYETHYLENE VAPOR BARRIER TO BE USED ON WALL CEILING APPLICATIONS IF UNFACED BATT INSULATION IS USED.

KEY TO WALL TYPES

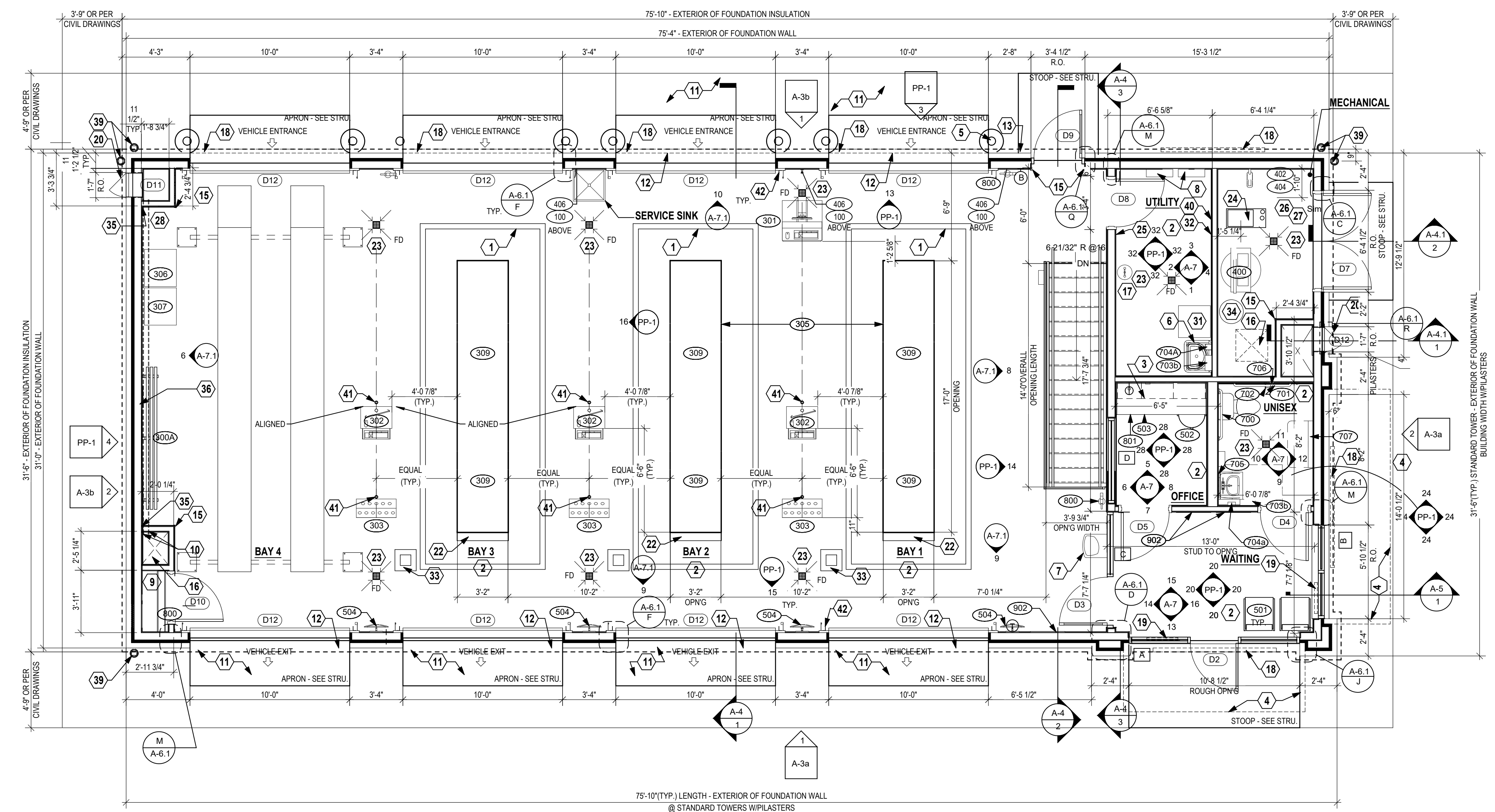
EXTERIOR WALL: BRICK WAINSCOT AND EIFS ABOVE. OVER ARMOISTURE BARRIER, OVER PLYWOOD SHEATHING (PER STRUCTURAL), OVER 2x6 WALL STUDS (TYPE & SPACING PER STRUCTURAL). PROVIDE 5/8" HIGH ABUSE GYPSUM WALL BOARD ON INTERIOR FACE OVER POLYETHYLENE VAPOR BARRIER. INSULATE STUD CAVITY WITH BATT INSULATION.

INTERIOR WALL: 2x4 STUDS @ 16" o.c. (U.N.O.) or 2x6, 2x8 WHERE NOTED ON PLANS, w/ P.I. SILL PLATE AND DOUBLE TOP PLATES w/ 5/8" GYPSUM BOARD EACH SIDE. EXTEND WALL AND SECURE TO STRUCTURE. INSULATE STUD CAVITY WITH SOUND BATTS WHERE NOTED.

NOTE: REFER TO STRUCTURAL DRAWINGS FOR SHEAR WALL LOCATIONS

FLOOR PLAN KEY NOTES:

- YELLOW SAFETY STRIPE INTEGRAL W/ FLOOR FINISH. REFER TO FINISH NOTE F & PIT OPENING PLAN DETAIL 4/A-9.
- FRP FINISH THIS WALL (OR AREA). PROVIDE/INSTALL TRIM AS REQUIRED. REFER TO FINISH SCHEDULE, INTERIOR ELEVATIONS, DETAILS 1/A-2, 2 & 3/A-7 52" A.F.F. REFER TO INTERIOR ELEVATIONS & DETAIL 5/A-7.
- PLASTIC LAMINATE COUNTERTOP AND WALL CABINETS. TOP OF FRP @ 52" A.F.F. REFER TO INTERIOR ELEVATIONS & DETAIL 5/A-7.
- LINE OF METAL AWNING/CANOPY ABOVE. REFER TO DETAIL 8/A-6.
- PIPE BOLLARD (SEE PLANS FOR QUANTITY/LOCATION). REFER TO DETAIL 6/A-10.
- SINK/LAV. REFER TO INTERIOR ELEVATIONS & PLUMBING.
- (2) WATER FOUNTAINS (HI/LO) REFER TO INTERIOR ELEVATIONS & PLUMBING.
- ELECTRICAL PANEL. REFER TO ELECTRICAL.
- DRUM TRANSFER SHELVING. REFER TO INTERIOR ELEVATIONS & DETAIL 24/A-7.
- ROUTE LUBE BAR LINES DOWN IN SHAFT TO TANKS IN LUBE PIT.
- PROVIDE SEALED CONCRETE APRONS IN FRONT OF OVERHEAD DOORS. REFER TO CIVIL FOR EXTENT OF PAVING AND FINISH MATERIAL.
- EXTEND FLOOR FINISH (F-1) TO OUTER EDGE OF SLAB @ BAY DOORS.
- PROVIDE PVC SLEEVE ROUTED THRU PRECAST PLANK/CONC. FLOOR SLAB TO LOWER LEVEL. LIP OF PIPE TO EXTEND 1" BELOW CEILING. TOP OF PIPE TO EXTEND 10" ABOVE SLAB. PROVIDE PVC CAP. REFER TO S-3.1 FOR LOCATION.
- PROVIDE 11/4"x11/4"x16 GA. STAINLESS STL. CORNER GUARDS OVER FRP PANELS. GUARDS TO STOP AT TOP OF FRP. REFER TO DETAIL 1/A-2.
- MECHANICAL DUCT. REFER TO MECHANICAL.
- EYEWEASH LOCATION. REFER TO PLUMBING.
- LINE OF SIGNAGE ABOVE. REFER TO INTERIOR ELEVATIONS & SIGN SCHEDULE.
- "OPEN" SIGN. REFER TO EXTERIOR ELEVATIONS, SIGN SCHEDULE, & ELECTRICAL.
- EXTERIOR ACCESS DOOR. REFER TO EXTERIOR ELEVATIONS & DOOR SCHEDULE.
- ANTIFREEZE FUNNEL BY G.C. MOUNTED ON WALL ABOVE PVC CHASE @ 30" A.F.F. REFER TO DETAIL 1/A-7.
- ROYAL BLUE STRIPE INTEGRAL W/ FLOOR FINISH. REFER TO FINISH NOTE F & PIT OPENING PLAN DETAIL 4/A-9.
- SLOPE CONC. TOPPING APPROX. 30° @ AROUND FLOOR DRAIN (TYP.)
- LINE OF MECHANICAL EQUIPMENT. REFER TO MECHANICAL.
- AIR PRESSURE SHUT OFF VALVE LOCATION FOR AIR COMPRESSOR.
- AUTO AIR DRYER. (COORD. LOCATION IN MECH. ROOM W/ VIQC C.M.)
- SMOKE DETECTOR (COORD. LOCATION IN MECH. ROOM W/ VIQC C.M.)
- A/C MACHINE (BY OWNER).
- NEW BATTERY DISPLAY (BY OWNER).
- USED BATTERY DISPLAY (BY OWNER).
- TOOL BOX (BY OWNER).
- 3'-0" X 4'-0" CORK BOARD (BY G.C.)
- BLUE GUIDE SQUARE ON FLOOR - INTEGRAL W/ FLOOR FINISH. REFER TO FINISH NOTE F & PIT OPENING PLAN DETAIL 4/A-9.
- WATER HEATER ON SHELF ABOVE. REFER TO DETAIL 7/A-7.
- STOP POINT FOR FRP WALL FINISH.
- AIRLINE PEDESTAL (BY OWNER).
- ANTI-FREEZE WASTE SINK. REFER TO DETAIL 1/A-7.
- ALUMINUM DOWNSPOUT. REFER TO EXTERIOR ELEVATIONS & ROOF PLAN
- 3'-0" X 4'-0" X 3/4" PLYWOOD TELEPHONE BOARD PAINT PT-1 (BY G.C.)
- 2" DIA. HOLE TO BE CORE DRILLED THRU PRECAST PLANK FLOOR (BY VENDOR). G.C. TO COORD. LOCATIONS W/ VIQC C.M.
- STEEL GUARD SECURELY MOUNTED TO FLOOR (EACH SIDE OF DOOR). COVER/PROTECT VITECTOR ELECTRONIC EYES AND LIFTECH EQUIPMENT W/ BLOCKING SIGHT LINE.
- EXTERIOR LADDER AND GATE (ARIZONA LOCATIONS ONLY-REMOVE IF NOT USED)



2 UPPER LEVEL FLOOR PLAN
Scale: 1/4" = 1'-0"

1 CORNER GUARD DETAIL
Scale: 1 1/2" = 1'-0"

ACKERMAN ESTVOLD
1907 17th St SE - Minot, ND 58701
701.837.8737 - www.ackerman-estvold.com
Minot, ND | Williston, ND | Boise, ID

I hereby certify that this plan specification, or report was prepared by me or under my direct supervision, and that I am a duly registered/licensed/certified engineer of the State of North Dakota.
Date: 5/17/24
Ref. No. 1724

Valvoline
Instant Oil Change

VALVOLINE INSTANT OIL CHANGE
WILLISTON, NORTH DAKOTA 58801

DRAWN BY: RMA
CHECKED BY: RMA

DATE: 5/5/2026

REVISIONS	DATE
1	5/13/2026
#	--/--
#	--/--
#	--/--

Project No. R25244

UPPER FLOOR PLAN

A-2

SIGNAGE SCHEDULE

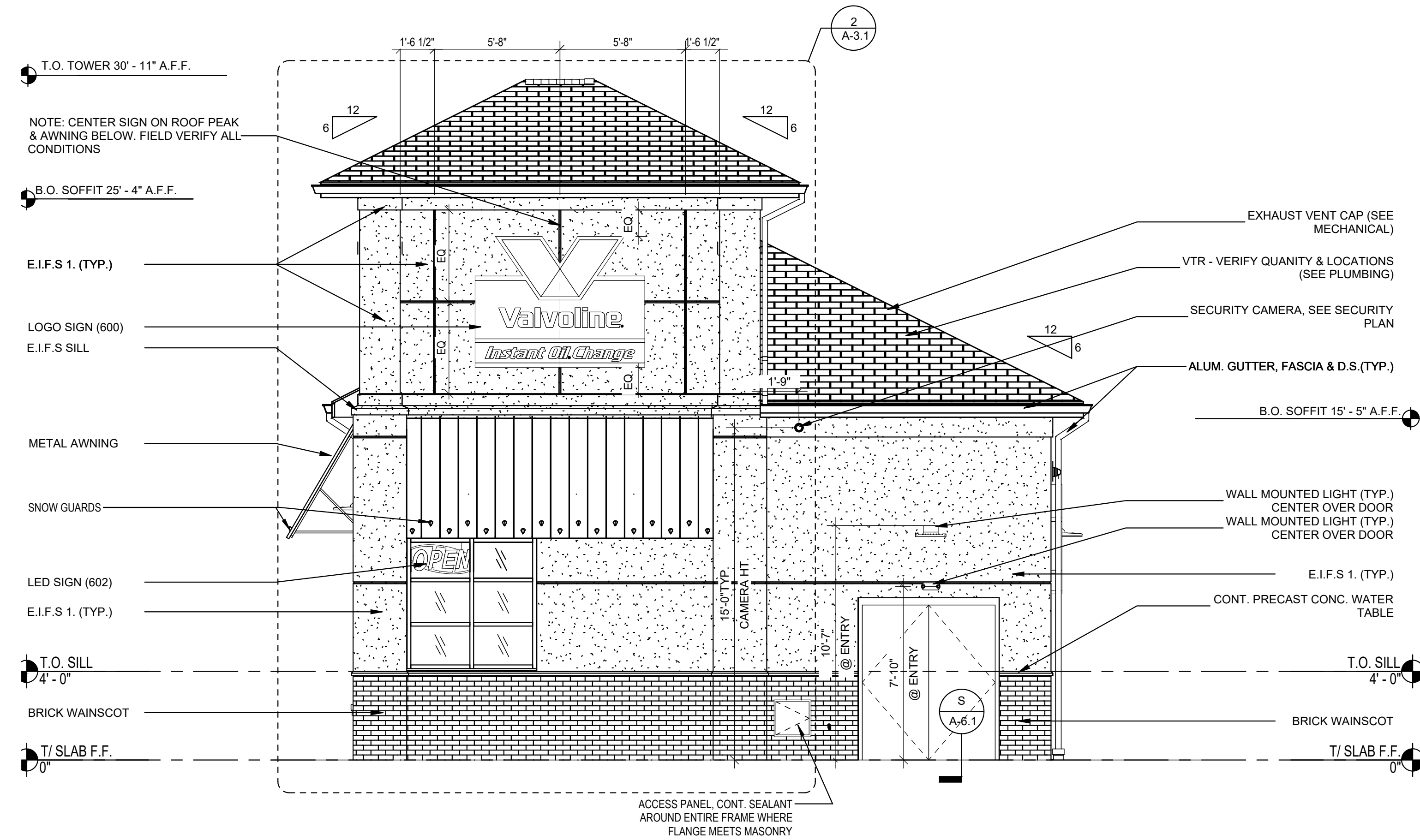
NUMBER	DESCRIPTION	SIZE	ILLUMINATED	QUANTITY
600	LOGO SIGN PROVIDED BY OWNER, INSTALLED BY SIGN CONTRACTOR	7'-8" x 5'-11" (46 SF)	INTERNALLY	2
601	LANE INDICATOR SIGN PROVIDED BY OWNER, INSTALLED BY SIGN CONTRACTOR	10'-0" x 1'-4" (13.33 SF)	NO	3
602	OPEN SIGN PROVIDED BY OWNER, INSTALLED BY SIGN CONTRACTOR	2'-7 1/2" x 11 1/2" (2.52 SF)	INTERNALLY	2
603	MONUMENT SIGN PER LOCAL AND DEVELOPMENTAL RESTRICTIONS	REFER TO SHEET A-10a	INTERNALLY	1

ELEVATION NOTES

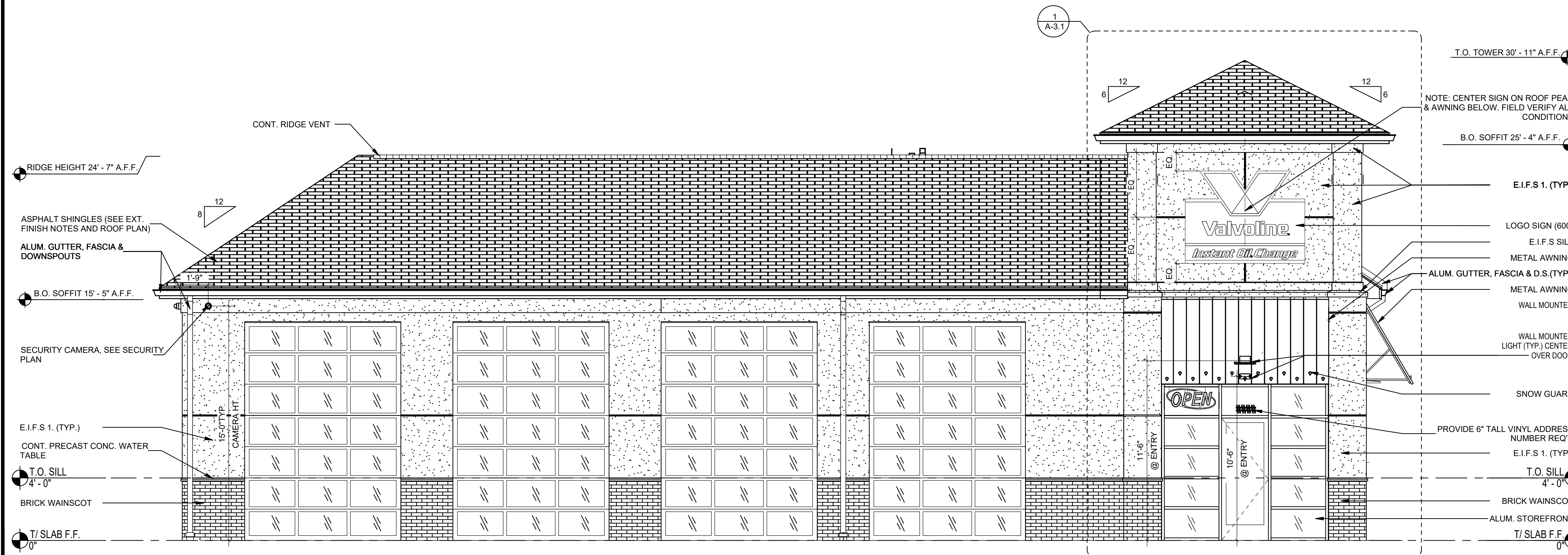
- E.I.F.S SHALL BE DRYVIT, CLASS PB DRAINAGE SYSTEM WITH FLUID APPLIED WATER RESISTIVE BARRIER BEHIND INSULATION BOARD.
- SIGNAGE SHOWN ON THESE ELEVATIONS IF OR GENERAL REFERENCE PURPOSES ONLY. ALL SIGNAGE SHALL BE APPLIED FOR & PERMITTED UNDER A SEPARATE SIGNAGE SUBMITTAL.
- G.C. SHALL PROVIDE BLOCKING IN STUD WALL BEHIND EACH SIGN AS REQUIRED BY SIGN VENDOR - FIELD VERIFY REQUIREMENTS W/ VENDOR & OWNER'S REPRESENTATIVE.
- ALL FLASHING, RIDGE CAPS, DRIP EDGE ETC. SHALL MATCH GUTTER & DOWNSPOUT MANUFACTURER'S STANDARD DETAILS. PROVIDE VENTED RIDGE CAP WHERE SHOWN.
- EXHAUST FAN, VTRS & SIMILAR ITEMS ON ROOF SHALL BE PAINTED TO MATCH ROOF.
- ALL MASONRY WITH CORNER EXPOSURES TO HAVE SAME PROFILE AS FACE OF THE STANDARD MASONRY PRODUCT. NO CUT SURFACE ARE TO BE EXPOSED.

EXTERIOR FINISHES

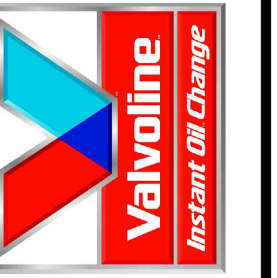
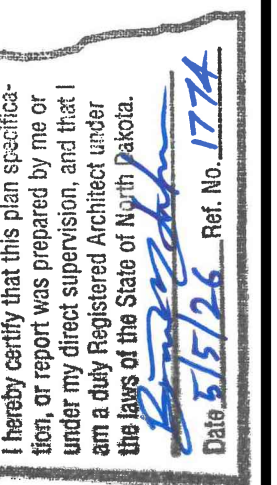
- | | |
|--|--|
| EXTERIOR INSULATED FINISH SYSTEM: | DRYVIT (SANDPEBBLE FINE)
COLOR: E.I.F.S. 1 = #113 AMARILLO WHITE |
| FACEBRICK WAINSCOT: (GRADE TO SILL) | HEBRON BRICK SUPPLY, IRONSPOTS OR SOLID COLOR, COLOR AS SELECTED FROM MANUFACTURER'S FULL STANDARD RANGE. |
| SILL: | MIDWEST CAST STONE, GREY, BASIS OF DESIGN
SEE DETAIL 3/A-3.2 FOR SILL PROFILE |
| MORTAR: | STANDARD GREY |
| GROUT: | 3/4" RAKED JOINTS, LEHIGH - "BEIGE" |
| MASONRY SEALER: | ALL MASONRY SURFACES SHALL BE TREATED W/SEALER REFER TO SPECIFICATIONS. |
| STANDING SEAM AWNING: | FIRESTONE UNA-CLAD OR APPROVED EQUAL KYNAR 500 / HYLAR METAL 5000 FLUOROCARBON STEEL "CHAMPAGNE METALLIC" OR OWNER APPROVED COLOR.
UNDERSIDE & FRAME TO BE PAINTED SW6152 "SUPERIOR BRONZE" |
| ROOF SHINGLES: | OWENS CORNING DURATION SERIES "DRIFTWOOD" |
| MISC. ROOF VENTS, FANS, ETC.: | PAINT SW7046 "ANONYMOUS" |
| GUTTER, DOWNSPOUTS, FASCIA & EXPOSED TRIM: | PREFINISHED ALUMINUM - "SIERRA TAN" |
| STOREFRONT SYSTEM: | 2x4 1/2" KAWNEER TRIFAB VG 451T SERIES CLEAR ANODIZED ALUMINUM STOREFRONT SYSTEM W/1" INSULATED GLAZING. |
| H.M. DOORS & FRAMES: | FIELD PAINT W/ SHERWIN-WILLIAMS B66-310 PRO-CYRL PRIMER FOLLOWED BY (2) FINISH COATS OF B66-300 SHER-CYRL HPA. COLOR SHALL BE SW-7515 "HOMESTEAD BROWN". PROVIDE MOCK-UP AND VERIFY COLOR W/ OWNER |
| STOREFRONT SYSTEM & O.H. DOOR FINISH: | CLEAR ANODIZED ALUMINUM |
| PARKING LOT STRIPING: | SHERWIN-WILLIAMS #TM226 SETFAST TM PAINT. COLOR SHALL BE "WHITE". |
| HANDICAP STALL STRIPING: | SHERWIN-WILLIAMS #TM2133 SETFAST TM PAINT. COLOR SHALL BE "ADA BLUE". |



2 SOUTH BUILDING ELEVATION
A-3a Scale: 1/4" = 1'-0"



1 WEST BUILDING ELEVATION
A-3a Scale: 1/4" = 1'-0"

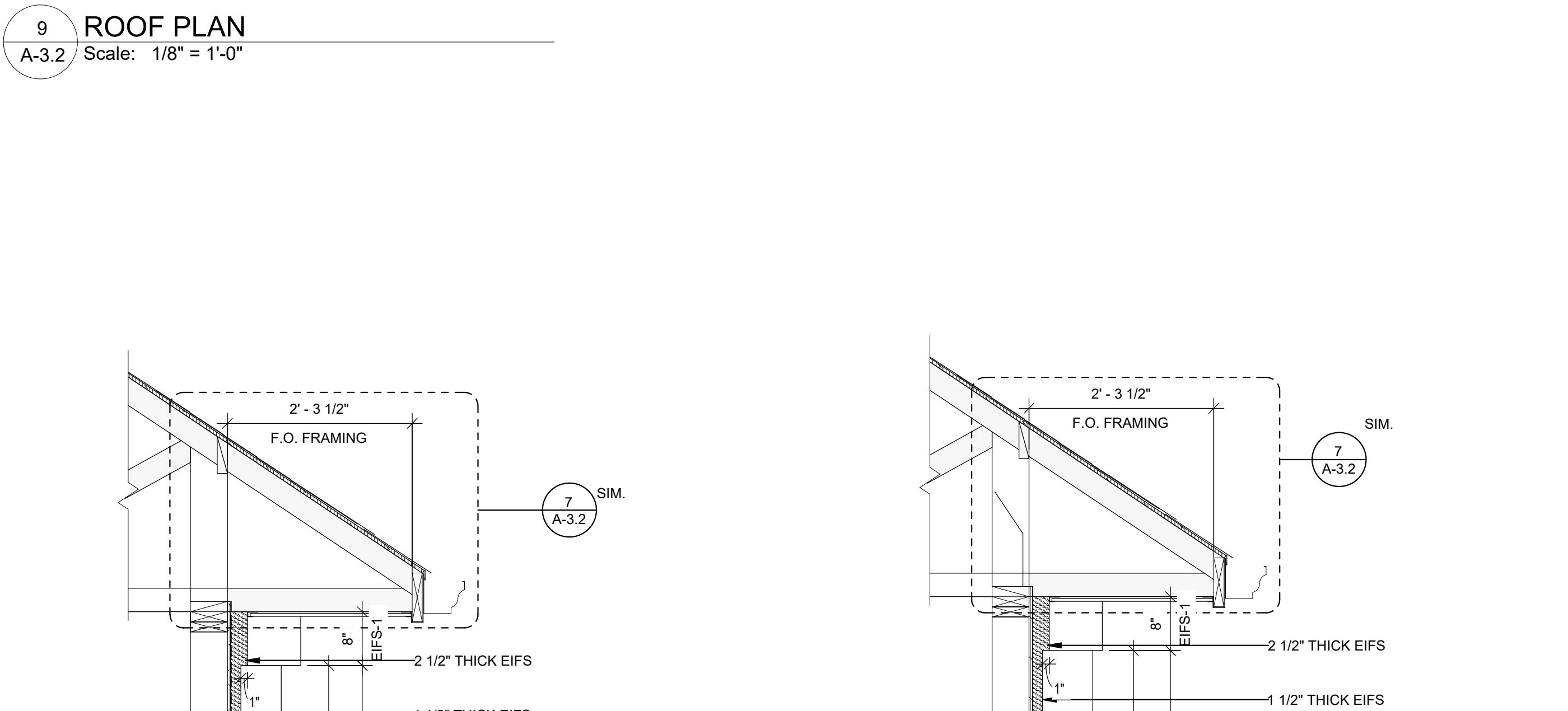
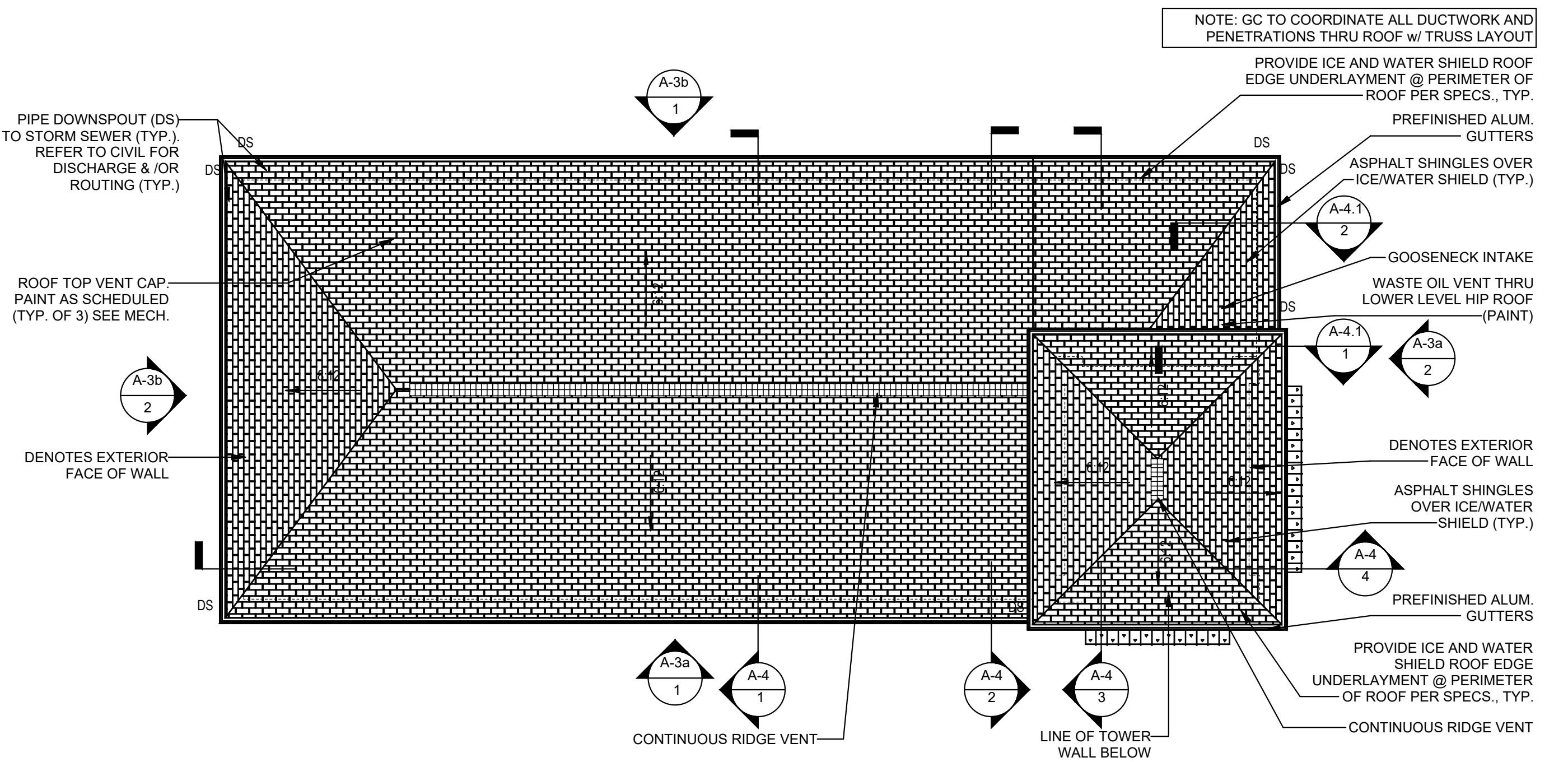
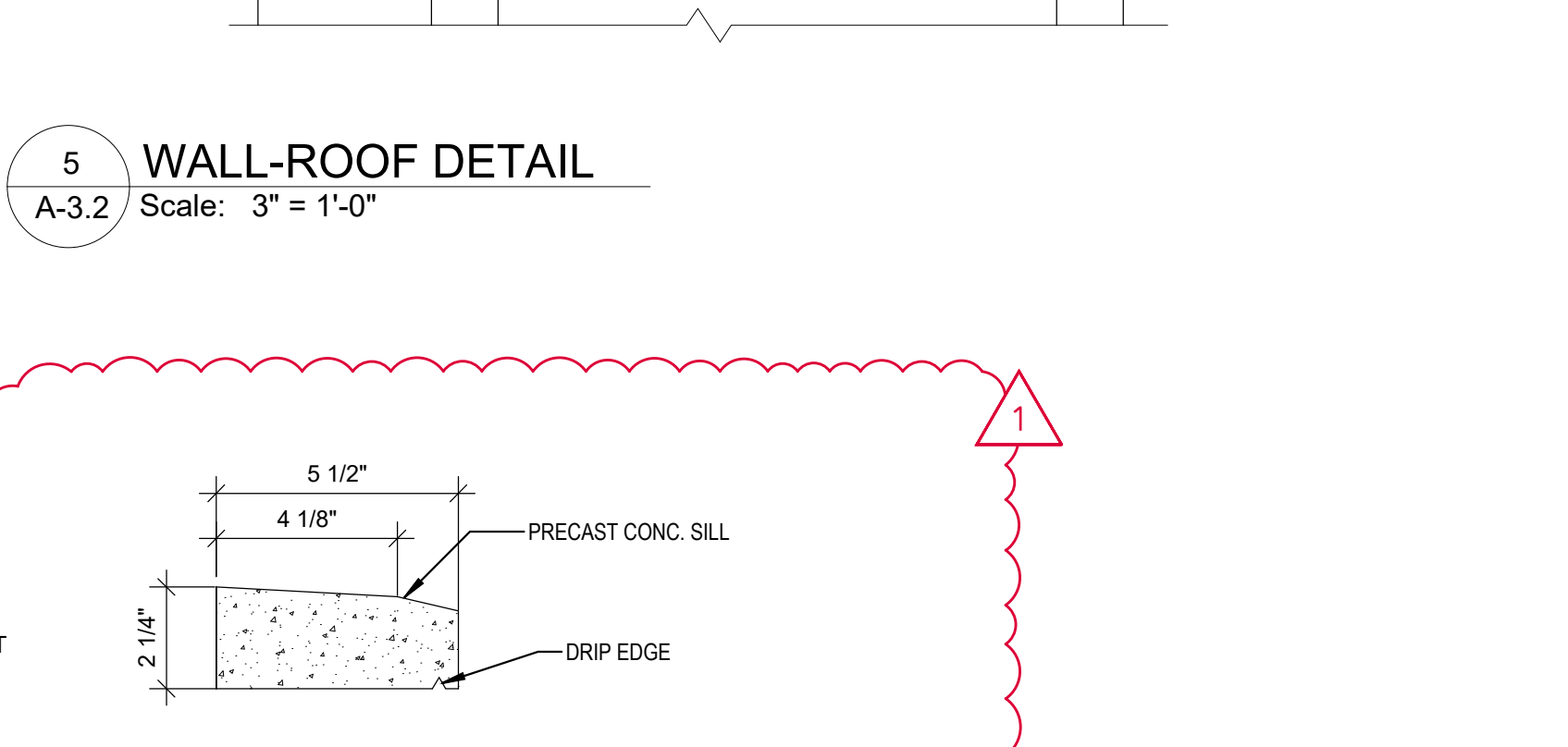
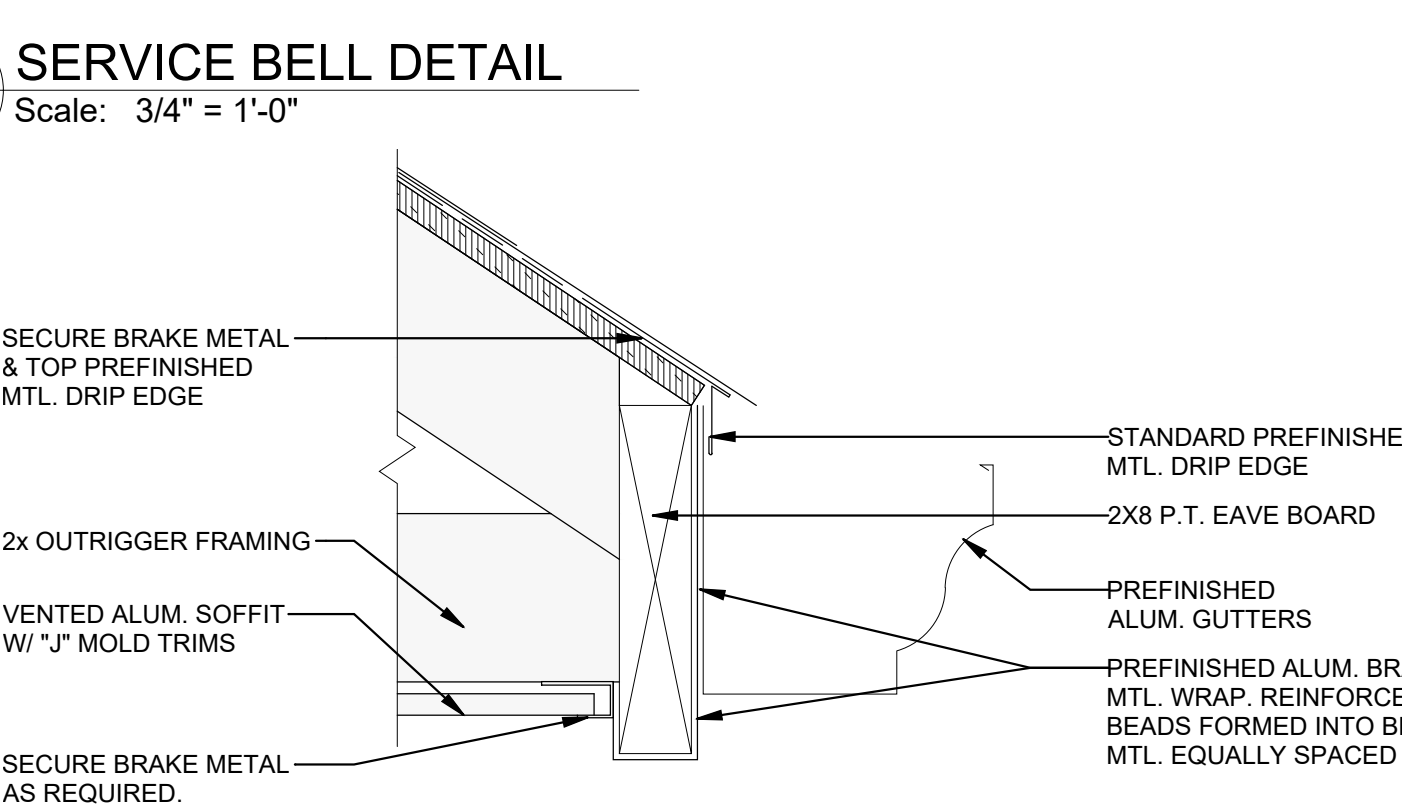
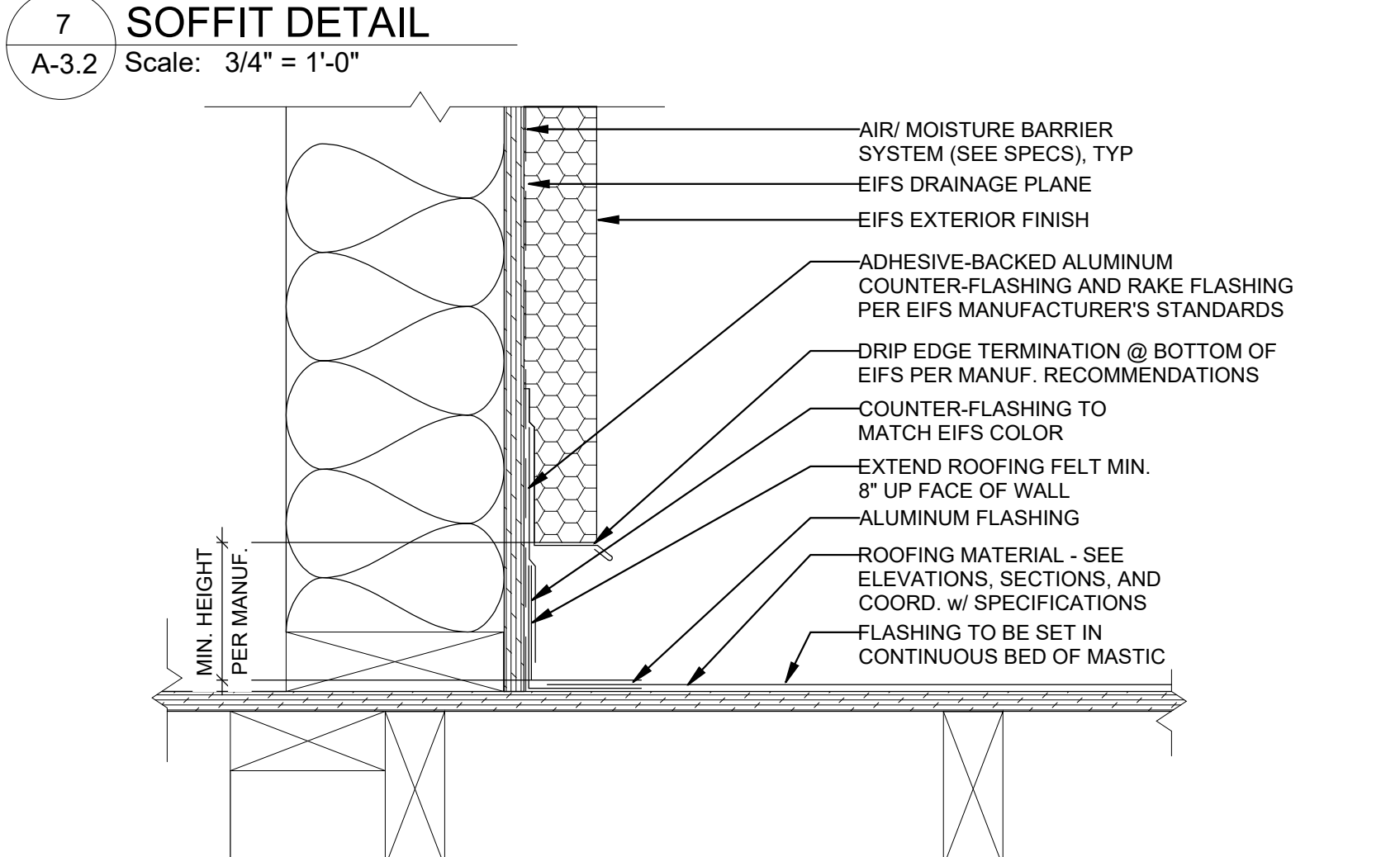
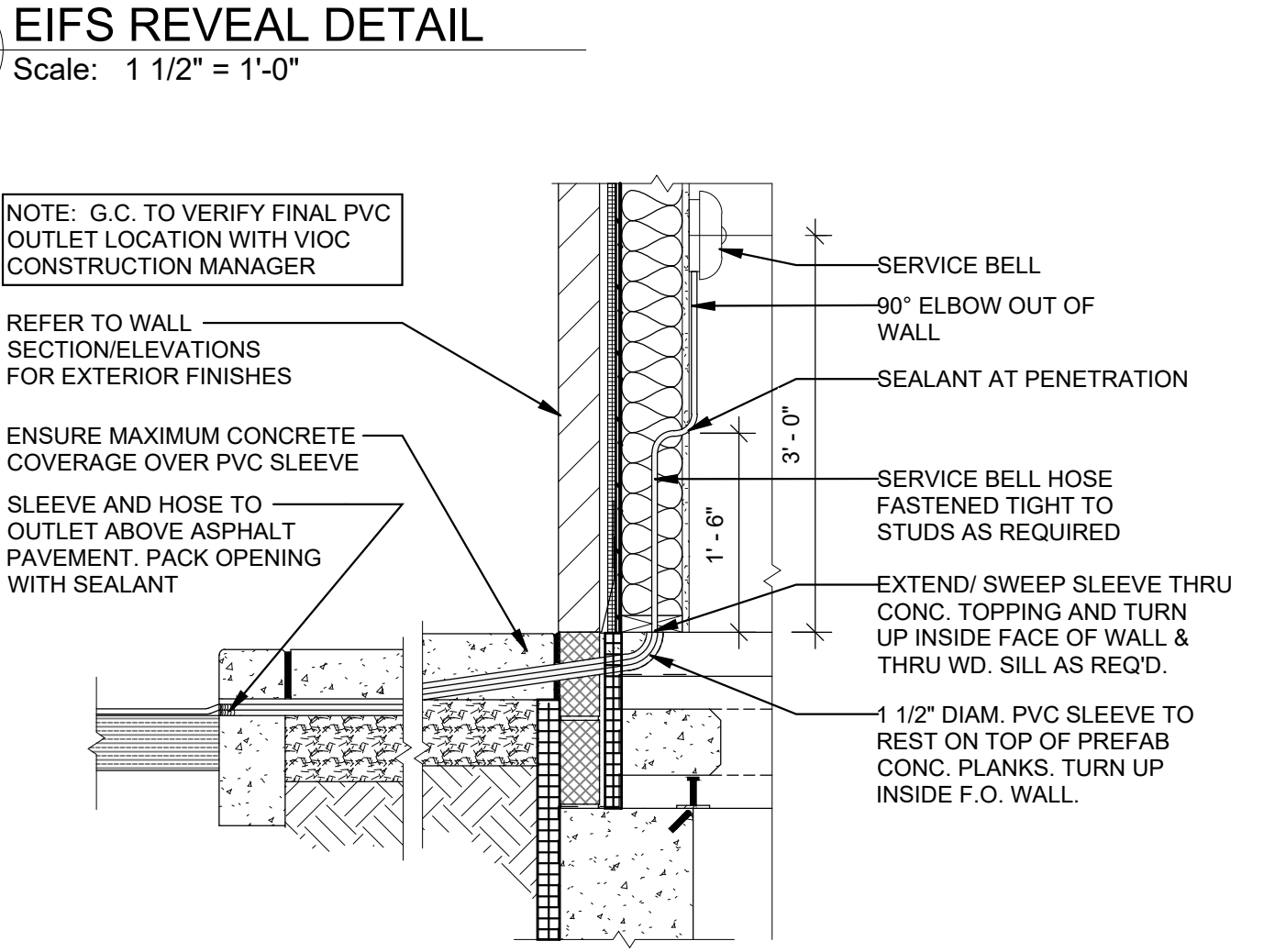
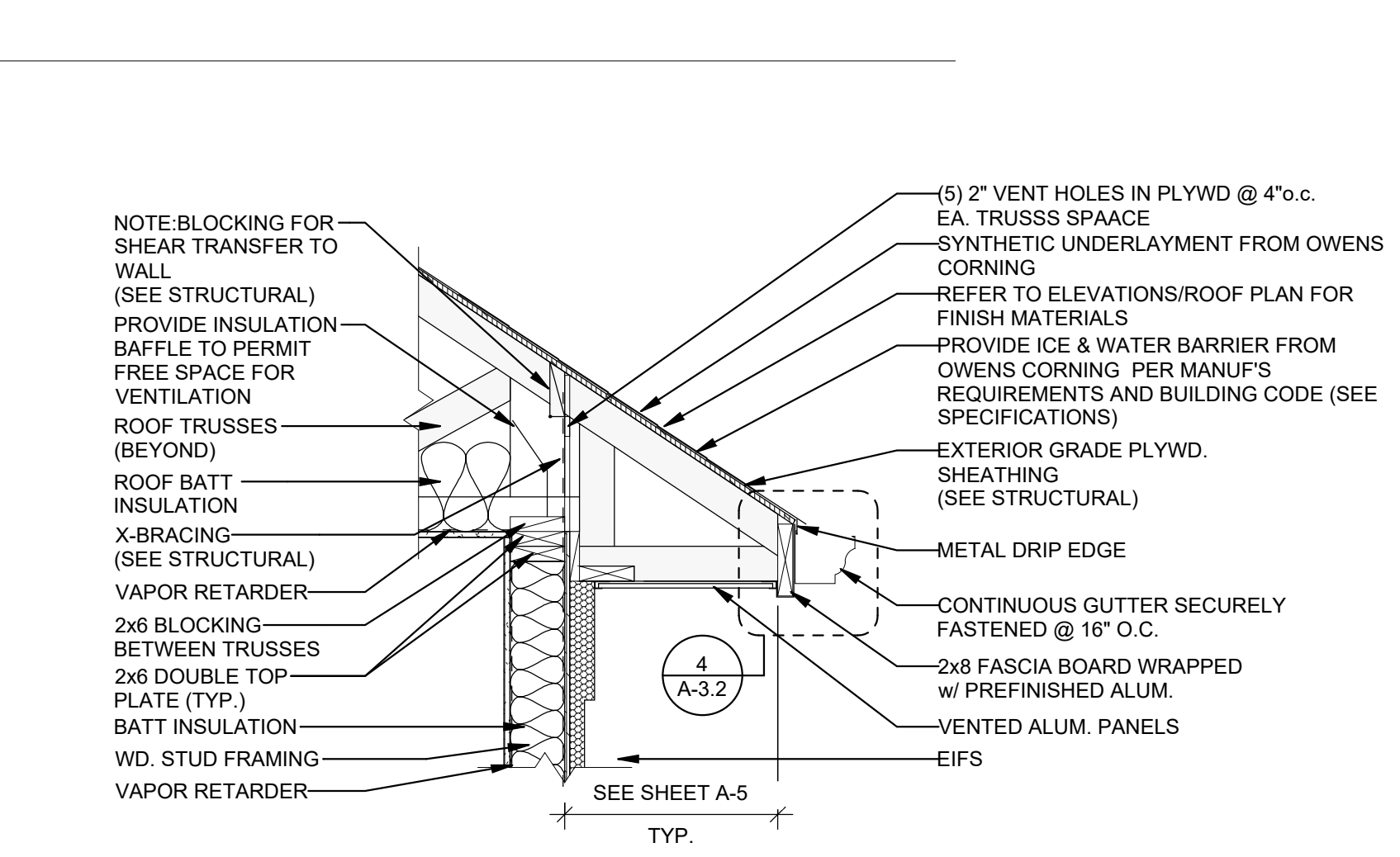
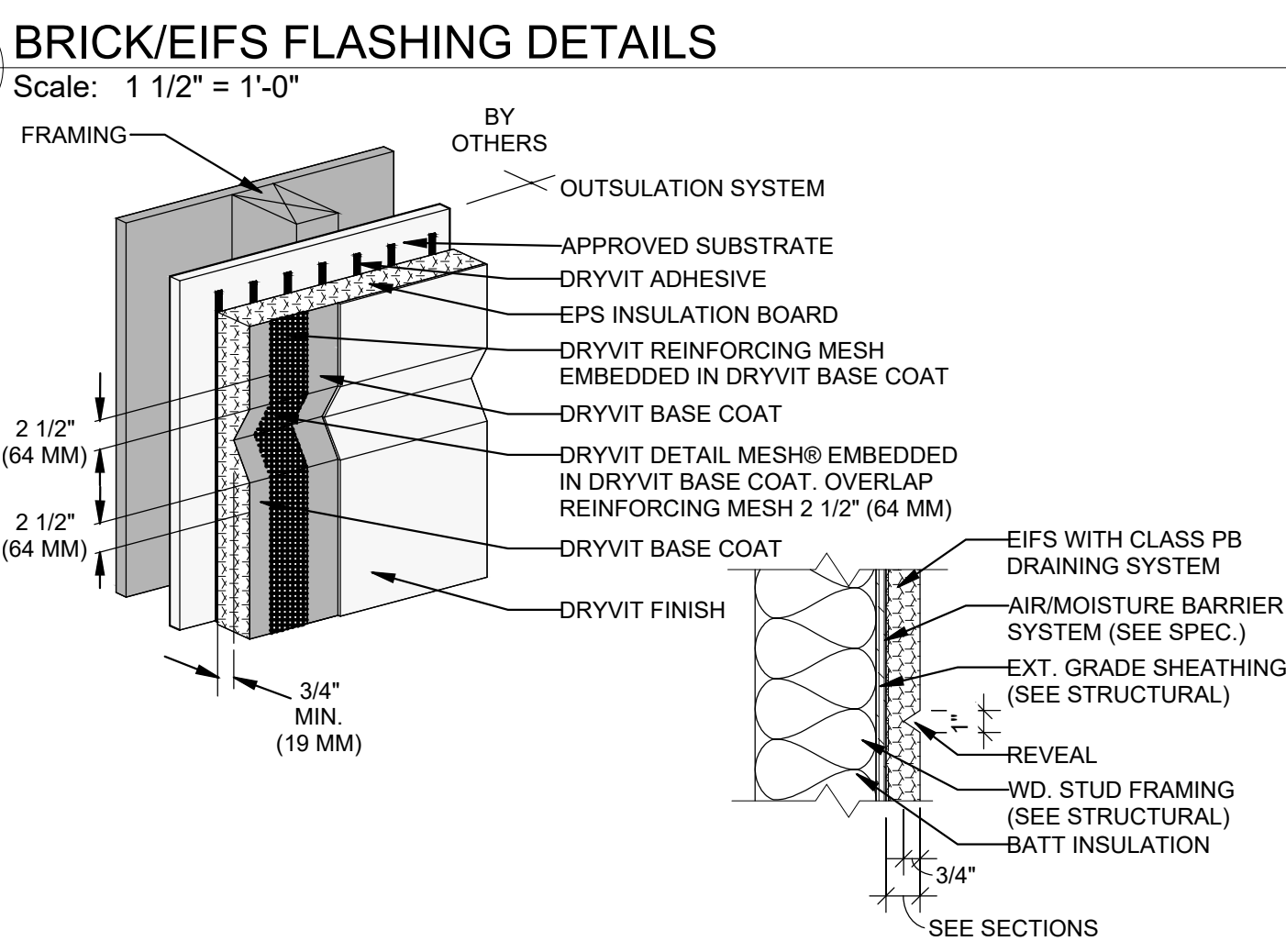
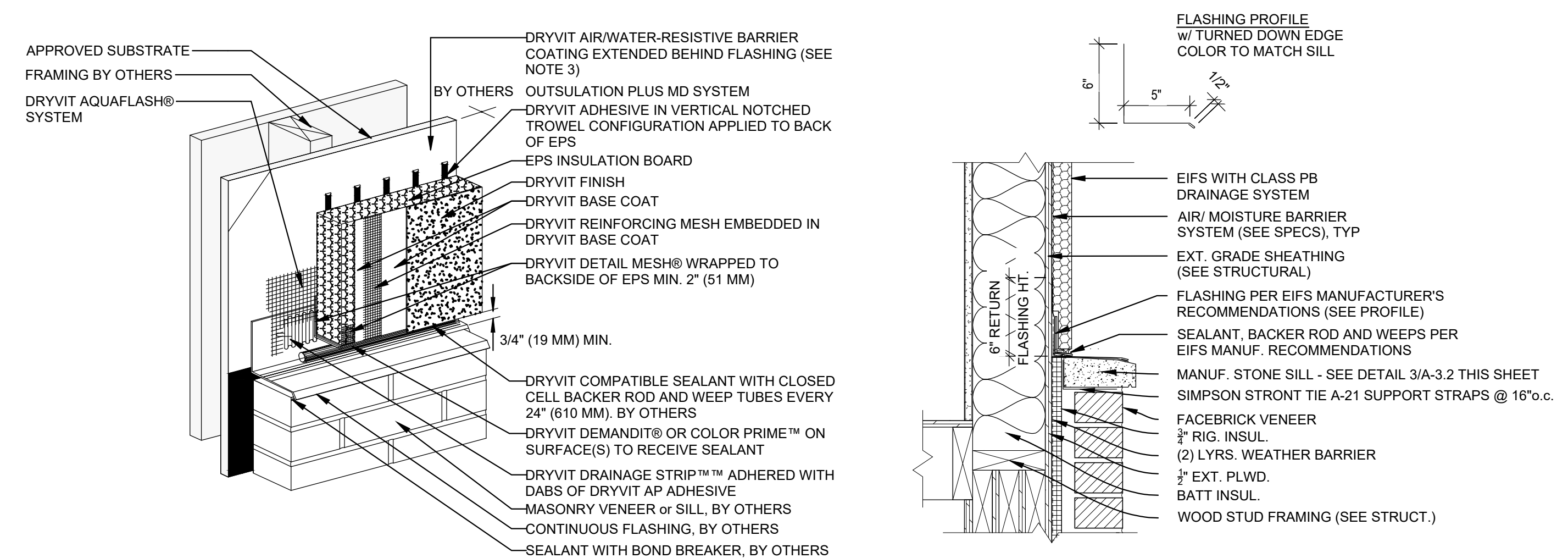


DRAWN BY: RMA
CHECKED BY: RMA

DATE: 5/5/2026

REVISIONS	DATE
1	5/13/2026
#	-/-/-
#	-/-/-

Project No. R25244



ACKERMAN ESTVOLD
1907 17th St SE - Minot, ND 58701
701.837.8737 - www.ackerman-estvold.com
Minot, ND | Fargo, ND | Williston, ND | Boise, ID

I hereby certify that this plan specification, or report was prepared by me or under my direct supervision, and that I am a duly registered architect under the laws of the State of North Dakota.
Date: 5/17/22 Ref. No. 1724



VALVOLINE INSTANT OIL CHANGE
WILLISTON, NORTH DAKOTA 58801

DRAWN BY: RMA
CHECKED BY: RMA

DATE: 5/5/2026

REVISIONS	
1	5/13/2026
#	--/--
#	--/--
#	--/--

Project No. R25244

ROOF/TOWER SECTS/DETS
A-3.2