



Moorhead Area Public Schools  
Sports Center North Rink Mechanical Upgrades  
Moorhead, MN

ZBA Project No. 25-029

Date: February 9, 2026

**BID DATE & TIME:** Thursday, February 12, 2026, at 2:00 pm local time

**BID OPENING LOCATION:** Moorhead Area Public Schools Operation Center  
1313 30<sup>th</sup> Avenue South  
Moorhead, MN, 56560

### ADDENDUM B

The following additions, clarifications, deletions and/or changes shall be made to the **SPECIFICATIONS:**

#### **004100 Proposal Form**

1. Revised proposal form including alternate bid items, is attached.

#### **01 2300 Alternates**

1. Add this section in its entirety.

#### **09 2113 – Gypsum Board Assemblies**

1. 2.01.B. Add a second UL Design number.
2. 2.02.B. Revise deflection and add subparagraph for shaftwall stud information.
3. 2.03.A. Revised.
4. 2.03.B. Add paragraph for Abuse-Resistant wallboard (see Alternate #2).
5. 2.03.C. Subparagraph 1 and 2 revisions.
6. 2.04.C Add fastener note.
7. 3.05.A.1. Revise finish level.
8. 3.06 Add paragraph.

The following additions, clarifications, deletions and/or changes shall be made to the **DRAWINGS:**

#### **A3.00 Roof Plan & Interior Elevation**

1. Interior Elevation 2/A3.00: Add control joints as shown.

#### **A3.01 Floor Plan & RCP**

1. Main and Second Level Floor Plans 1 & 2/A3.01: Revise notes.
2. Images 1 & 2: Add demolition note.

**S2.01 Existing Roof Framing Plan**

1. See revised details 2 and 4.

- a. Clarification: At the SW corner of the rink, the removal/reinstallation of CMU and ceiling grid (as required to facilitate steel work) will be by others and coordinated by GCS.

**END OF ADDENDUM B**

**SECTION 00 4100  
PROPOSAL FORM**

**PROJECT:**

Moorhead Area Public Schools  
Sports Center North Rink Mechanical Upgrades  
Moorhead, MN

**DATE: THURSDAY, FEBRUARY 12, 2026**

Proposal of \_\_\_\_\_, hereinafter called the bidder, a  
\_\_\_\_\_  
(State) \_\_\_\_\_ corporation / partnership / an individual, doing business as  
(strike out inapplicable terms)  
\_\_\_\_\_ to \_\_\_\_\_, hereinafter called the Owner.

**TO THE OWNER:**

The bidder in compliance with the Advertisement for Bids for the construction of the above mentioned project, having examined the plans and specifications with related documents, the site of the proposed work, and being familiar with all of the conditions surrounding the construction of the proposed project including the availability of materials and labor, hereby proposes to furnish all labor, materials, and supplies and to construct the project in accordance with the contract documents within the time set forth therein and at the prices stated below. These prices are to cover all expenses incurred in performing the work required under the contract documents of which this proposal is a part.

Bidder hereby agrees to commence work under this contract on or before a date noted in the Project Construction Schedule included in these specifications and to fully complete the project in the time allotted by this same schedule.

Bidder acknowledges receipt of the following addenda: \_\_\_\_\_.

Bidder acknowledges that they have read specification section 00 0108 Bid Package Summary and SOW (Scope of Work) descriptions.

Bidder Initials: \_\_\_\_\_

**BASE PROPOSAL:**

Bidder agrees to perform all of the Construction Work described in the specifications and shown on the plans for the following Bid Package(s) for the sum of money as noted following each Bid Package: (Contractors are required to submit individual bids for each Bid Package. Bidders are allowed to submit combined bids as well.)

Bidder shall include under Base Bid all pertinent allowances described for specific Bid Packages under Section 01 2100 - Allowances.

**BID PACKAGE**

Number/Name	Amount of Bid
# _____	\$ _____
# _____	\$ _____
# _____	\$ _____

**ALTERNATE PROPOSALS:**

Alternate No. 1 - Top Coat over High-Performance Coating.

Add/Deduct \$ \_\_\_\_\_

Alternate No. 2 - Abuse-Resistant (AB) Board.

Add/Deduct \$ \_\_\_\_\_

Bidder understands that the Owner reserves the right to reject any or all bids and to waive any informality in the bidding.

The bidder agrees that this bid shall be good and may not be withdrawn for a period of 30 days after the scheduled closing time for receiving bids.

Upon receipt of written notice of acceptance of this bid, bidder will execute the formal contract attached within 10 days and deliver a surety bond or bonds as required by the specifications.

Respectfully submitted,

By \_\_\_\_\_  
(signature)

Title \_\_\_\_\_

Business Address \_\_\_\_\_

(SEAL if bid is by a Corporation) \_\_\_\_\_

Telephone No. \_\_\_\_\_

E-Mail \_\_\_\_\_

**END OF SECTION**



**SECTION 01 2300  
ALTERNATES**

**PART 1 GENERAL**

**1.01 SECTION INCLUDES**

- A. Description of Alternates.

**1.02 ACCEPTANCE OF ALTERNATES**

- A. Alternates quoted on Bid Forms will be reviewed and accepted or rejected at Owner's option. Accepted Alternates will be identified in the Owner-Contractor Agreement.
- B. Coordinate related work and modify surrounding work to integrate the Work of each Alternate.

**1.03 SCHEDULE OF ALTERNATES**

- A. Alternate No. 1 - Top Coat over High-Performance Coating:
  - 1. Base Bid: Provide (2) coats high-performance coating as specified in 09 9600, paragraph 2.04 over joists/deck/misc steel as described in the bid documents. No top coat.
  - 2. Alternate Bid Item: Provide (1) coat of top coat as specified in 09 9600, paragraph 2.03 Top Coat Materials, over the (2) coats high-performance coating.
- B. Alternate No. 2 - Abuse-Resistant (AB) Board:
  - 1. Base Bid: At the shaft wall assembly, for the 2nd (outer) layer of wallboard, provide impact-resistant (IR) board at the lower 12' of wall.
  - 2. Alternate Bid Item 2: At the shaft wall assembly, for the 2nd (outer) layer of wallboard, provide abuse-resistant (AR) board at the lower 12' of wall.

**PART 2 PRODUCTS - NOT USED**

**PART 3 EXECUTION - NOT USED**

**END OF SECTION**

This page intentionally left blank

**SECTION 09 2116  
GYPSUM BOARD ASSEMBLIES**

**PART 1 GENERAL**

**1.01 SECTION INCLUDES**

- A. Performance criteria for gypsum board assemblies.
- B. Metal stud wall framing.
- C. Gypsum wallboard.
- D. Joint treatment and accessories.
  - 1. Firestopping and sealants: Bid Pkg 9B shall include all materials, labor, and equipment necessary to provide a complete 2-hour fire-rated shaftwall assembly.



**1.02 REFERENCE STANDARDS**

- A. AISI S220 - North American Standard for Cold-Formed Steel Nonstructural Framing; 2020.
- B. AISI S240 - North American Standard for Cold-Formed Steel Structural Framing; 2015, with Errata (2020).
- C. ASTM A1003/A1003M - Standard Specification for Steel Sheet, Carbon, Metallic- and Nonmetallic-Coated for Cold-Formed Framing Members; 2015.
- D. ASTM C475/C475M - Standard Specification for Joint Compound and Joint Tape for Finishing Gypsum Board; 2017 (Reapproved 2022).
- E. ASTM C754 - Standard Specification for Installation of Steel Framing Members to Receive Screw-Attached Gypsum Panel Products; 2020.
- F. ASTM C840 - Standard Specification for Application and Finishing of Gypsum Board; 2025.
- G. ASTM C1047 - Standard Specification for Accessories for Gypsum Wallboard and Gypsum Veneer Base; 2019.
- H. ASTM C1396/C1396M - Standard Specification for Gypsum Board; 2017.
- I. ASTM C1629/C1629M - Standard Classification for Abuse-Resistant Nondecorated Interior Gypsum Panel Products and Fiber-Reinforced Cement Panels; 2024.
- J. ASTM C1658/C1658M - Standard Specification for Glass Mat Gypsum Panels; 2019 (Reapproved 2024).
- K. ASTM D3273 - Standard Test Method for Resistance to Growth of Mold on the Surface of Interior Coatings in an Environmental Chamber; 2021.
- L. GA-216 - Application and Finishing of Gypsum Panel Products; 2024.
- M. UL (FRD) - Fire Resistance Directory; Current Edition.
- N. UL 2079 - Standard for Tests for Fire Resistance of Building Joint Systems; Current Edition, Including All Revisions.

**1.03 ADMINISTRATIVE REQUIREMENTS**

- A. Preinstallation Meeting: Conduct a preinstallation meeting one week prior to the start of the work of this section; require attendance by all affected installers.

**1.04 SUBMITTALS**

- A. See Section 01 3000 - Administrative Requirements for submittal procedures.
- B. Product Data:
  - 1. Provide data on metal framing, gypsum board, accessories, and joint finishing system.
  - 2. Provide manufacturer's data on partition head to structure connectors, showing compliance with requirements.

## 1.05 QUALITY ASSURANCE

- A. Installer Qualifications: Company specializing in performing work of the type specified and with at least three years of documented experience.

## 1.06 DELIVERY, STORAGE, AND HANDLING

- A. Store gypsum products and accessories indoors and keep above freezing. Elevate boards above floor, on nonwicking supports, in accordance with manufacturer's recommendations.
- B. Store metal products to prevent corrosion.

## PART 2 PRODUCTS

### 2.01 GYPSUM BOARD ASSEMBLIES

- A. Provide completed assemblies complying with ASTM C840 and GA-216.
- B. Fire-Resistance-Rated Assemblies: Provide completed assemblies with the following characteristics:
  - 1. Fire-Resistance-Rated Area Separation Walls: UL listed assembly No. U497 and V497; two hour rating.
  - 2. UL Assembly Numbers: Provide construction equivalent to that listed for the particular assembly in the current UL (FRD).

### 2.02 METAL FRAMING MATERIALS

- A. Steel Sheet: ASTM A1003/A1003M, subject to the ductility limitations indicated in AISI S220 or equivalent.
- B. Nonstructural Framing System Components: AISI S220; galvanized sheet steel, of size and properties necessary to comply with ASTM C754 for the spacing indicated, with maximum deflection of wall framing of L/360 at 5 psf (L/360 at 240 Pa).
  - 1. Shaftwall Studs: 6", 18 gauge.
- C. Shaft Wall Studs and Accessories: AISI S220; galvanized sheet steel, of size and properties necessary to comply with ASTM C754 and specified performance requirements.
- D. Partition Head To Structure Connections: Provide track fastened to structure with legs of sufficient length to accommodate deflection, for friction fit of studs cut short and fastened as indicated on drawings.

### 2.03 BOARD MATERIALS

- A. Gypsum Wallboard: Glass-mat-faced as defined in ASTM C1658/C1658M as defined in ASTM C1396/C1396M; sizes to minimize joints in place; ends square cut.
  - 1. Application: Use for vertical surfaces, unless otherwise indicated.
  - 2. Mold Resistance: Score of 10, when tested in accordance with ASTM D3273.
    - a. Mold resistant board is required at all locations.
  - 3. Thickness:
    - a. Vertical Surfaces: 5/8 inch (16 mm).
- B. Abuse Resistant Wallboard:
  - 1. Application: bottom 12', outermost layer.
  - 2. Performance: Level 3, minimum, when tested in accordance with ASTM C1629/C1629M.
  - 3. Mold Resistance: Score of 10, when tested in accordance with ASTM D3273.
  - 4. Type: Fire-resistance-rated Type X, UL or WH listed.
  - 5. Thickness: 5/8 inch (16 mm).
  - 6. Edges: Tapered.
- C. Impact Resistant Wallboard: Glass mat-faced, impact-resistant gypsum board complying with ASTM C1629, minimum Level 3 impact resistance, and suitable for high-humidity environments.
  - 1. Application: At firewall from floor to 12'-0" AFF.
  - 2. Performance: Level 3, minimum, when tested in accordance with ASTM C1629/C1629M.

3. Mold Resistance: Score of 10, when tested in accordance with ASTM D3273.
  4. Glass Mat-Faced Type: Gypsum wallboard, as defined in ASTM C1658/C1658M.
  5. Type: Fire-resistance-rated Type X, UL or WH listed.
  6. Thickness: 5/8 inch (16 mm).
  7. Edges: Tapered.
  8. Glass Mat Faced Products: Noncombustible, moisture-resistant gypsum core encased in a fiberglass face and back that shed water. Provide minimum 20-gauge (0.0296 inch) (0.752 mm) steel studs, as defined by the Steel Stud Manufacturers Association (SSMA). Non intended for exterior applications or constant exposure to water. Protect from immersion in water and the eroding effects of cascading water. Product is not suitable for use as a substrate for tile in wet areas such as tubs, showers, gang shower and other areas subject to direct water exposure. Refer to Gypsum Association's GA-216 reference guide, or ASTM C840 reference standard for additional installation requirements.
- D. Shaftwall and Coreboard: Type X; 1 inch (25 mm) thick by 24 inches (600 mm) wide, beveled long edges, ends square cut.
1. Glass Mat Faced Type: Glass mat shaftliner gypsum panel or glass mat coreboard gypsum panel as defined in ASTM C1658/C1658M.
  2. Mold Resistance: Score of 10, when tested in accordance with ASTM D3273.
  3. Framing: Gypsum Liner Panels attach to metal framing; CT studs. Refer to product data sheet for additional information.

#### 2.04 GYPSUM BOARD ACCESSORIES

- A. Beads, Joint Accessories, and Other Trim: ASTM C1047, galvanized steel, unless noted otherwise.
1. L-Trim with Tear-Away Strip: Sized to fit 1/2-inch (13 mm) thick gypsum wallboard.
  2. Expansion Joints:
    - a. Fire-Resistance Rated: 2 hours when joint system tested in accordance with UL 2079.
    - b. Type: V-shaped metal with factory-installed protective tape.
- B. Joint Materials: ASTM C475/C475M and as recommended by gypsum board manufacturer for project conditions.
- C. Fasteners: Corrosion-resistant screws recommended by shaft wall system manufacturer.

### PART 3 EXECUTION

#### 3.01 EXAMINATION

- A. Verify that project conditions are appropriate for work of this section to commence.

#### 3.02 SHAFT WALL INSTALLATION

- A. Shaft Wall Framing: Install in accordance with manufacturer's installation instructions.
- B. Shaft Wall Liner: Cut panels to accurate dimensions and install sequentially between special friction studs.

#### 3.03 BOARD INSTALLATION

- A. Comply with ASTM C840, GA-216, and manufacturer's instructions. Install to minimize butt end joints, especially in highly visible locations.
- B. Fire-Resistance-Rated Construction: Install gypsum board in strict compliance with requirements of assembly listing.

#### 3.04 INSTALLATION OF TRIM AND ACCESSORIES

- A. Control Joints: Place control joints consistent with lines of building spaces and as indicated.
- B. Corner Beads: Install at external corners, using longest practical lengths.

### 3.05 JOINT TREATMENT

- A. Finish gypsum board in accordance with levels defined in ASTM C840, as follows:
1. Level 5: Walls and ceilings to receive semi-gloss or gloss paint finish and other areas specifically indicated. (Level 5 finish may be achieved by either a full troweled skim coat or by application of a high-build drywall surfacer applied in accordance with manufacturer's instructions.)
    - a. Embed tape in joint compound at all joints and interior angles.
    - b. Apply two additional coats of joint compound over joints, fasteners, and accessories, feathered smooth and flush with adjacent surfaces.
    - c. After joints are complete and dry, apply a continuous skim coat of joint compound over the entire surface of the glass-mat-faced gypsum board to produce a uniform, monolithic surface free of board texture, joint ridges, or fastener depressions.
    - d. Sand lightly to achieve a smooth, uniform surface suitable for painting.
    - e. Ensure surface is free of tool marks, shadowing, or telegraphing of joints or fasteners.
    - f. Special considerations for Hockey Rink Environment:
      - 1) Ensure all joints are fully sealed and smooth to minimize potential moisture migration.
      - 2) Do not leave board exposed to high humidity prior to finishing.
      - 3) Coordinate with painting contractor regarding primer compatible with glass-mat-faced board.
- B. Tape, fill, and sand exposed joints, edges, and corners to produce smooth surface ready to receive finishes.
1. Feather coats of joint compound so that camber is maximum 1/32 inch (0.8 mm).

### 3.06 FIRE-RATED ASSEMBLIES & SEALANTS

- A. Continuity of Fire Rating: The Contractor is responsible for maintaining the 2-hour fire-resistive integrity of the shaftwall at all perimeter intersections (floor, ceiling, and abutting walls) and at all horizontal and vertical control joints.
- B. Fire-Rated Control Joints: Install fire-rated control joint accessories in strict accordance with the manufacturer's instruction and the governing UL Design.
- C. Perimeter Fire-Stopping:
1. Install mineral wool safing (min. 4 pcf density) and fire-rated "smoke" sealants at the head-of-wall, base-of-wall, and all penetrations as required by the UL system.
  2. Sealants shall be installed to accommodate the maximum expected structural deflection of the 600CT18 studs without compromising the 2-hour rating.
- D. Level 5 Compatibility: All sealants and fire-rated accessories used must be compatible with a Level 5 finish. Sealants at visible joints must be non-bleeding, paintable, and capable of being finished to match the adjacent surface texture.

**END OF SECTION**



**ADDENDUM NO \_\_MB\_\_**

**DATE:** February 5, 2026

**PROJECT:** Moorhead Area Public Schools  
Sports Center North Rink Mechanical Upgrades  
Moorhead, MN  
MMD Project Number 2025-124

**DATE OF ISSUE:** January 2026

**NOTICE TO ALL KNOWN PLANHOLDERS AND BIDDERS:**

Martin Mechanical Design, Inc. issues this addendum to all known individuals, firms, or corporations who have obtained or received drawings and specifications for the above referenced project. The bidder or planholder assumes all responsibility for obtaining all addendums and listing same on the proposal forms. The Engineer is not responsible, nor does he accept any liability for ensuring that the plan holders, bidders, or other interested parties have received all addendums.

**THIS ADDENDUM SHALL BE MADE A PART OF THE CONTRACT PLANS AND SPECIFICATIONS. BIDDERS SHALL ACKNOWLEDGE RECIEPT OF THIS AND ALL OTHER ADDENDUMS IN THE APPROPRIATE SPACE PROVIDED ON THE BID FORM.**

**MARTIN MECHANICAL DESIGN INC.**

**BRIAN MARTIN**

---



**Changes to Specifications:**

None

**Changes to Drawings:**

**Sheet M301:**

Revise RTU-1 supply duct routing as indicated to avoid conflicts with existing structure.

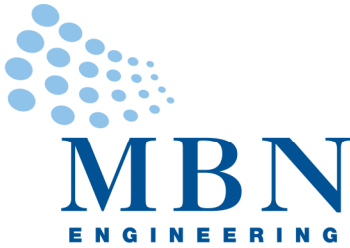
Provide sound liner on RTU-1 return duct as noted.

**PRIOR APPROVALS:**

Any products not listed in the specifications or specifically approved as a prior approval are not allowed for installation. Any products submitted for review during shop drawing phase not approved through this process will be rejected and contractor will be made to supply an approved product at contractors' expense.

<u>Section</u>	<u>Description</u>	<u>Manufacturer</u>	<u>Approved</u>	<u>Not Approved</u>
23 0923	Control Devices for HVAC	Lynxspring Niagra		X
23 7416	Packaged Gas/Dx RTU	Trane		X
23 7425	Dessiccant Dehumidifier	Innovative Air		X

**END OF MECHANICAL ADDENDUM**



**Moorhead Area Public Schools  
Sports Center North Rink Mech Upgrades  
Moorhead, MN**

**Addendum B – Electrical Items  
MBN Project No. 25-249**

**The following electrical items are to be included in Addendum B for the project.**

**Changes to the Drawings**

**Sheet E0.01 – Symbols Legend and Luminaire Schedule**

1. Light Fixture Schedule – Add the following to the description for lighting fixture A, 'Light Fixture to be wet location rated.'

**Sheet E2.01 – Main Floor Plan – Electrical**

1. Add plan note 10 adjacent to all of the type AE fixtures, '10. The type AE fixtures require an unswitched connection to the fixture for the emergency battery pack. An unswitched conductor will need to be added in the existing conduit to the AE fixtures.'
2. Add plan note 11 adjacent to all of the type S1 and S2 fixtures, '11. The existing exposed conductor from the junction box to the speaker will need to be protected during sandblasting operations. Coordinate required protection with sandblasting contractor.'

**Prior Approvals**

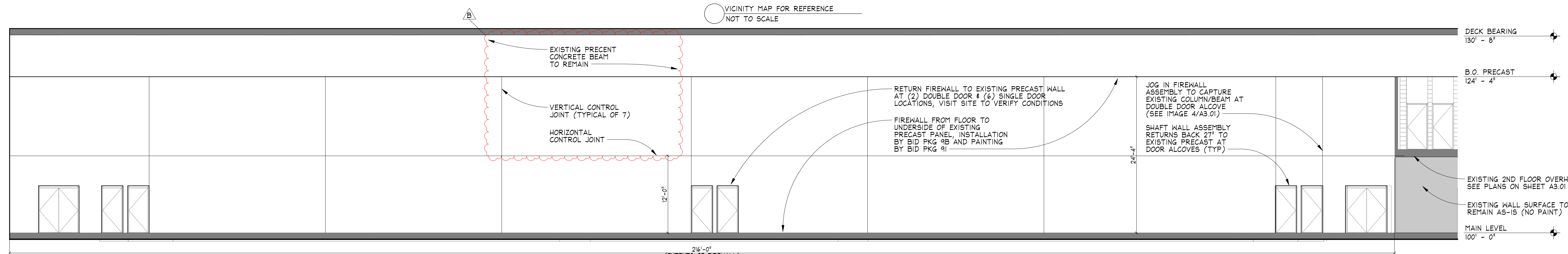
**Section 26 51 00 – Lighting**

- |           | <u>Manufacturer</u> | <u>Series</u>     |
|-----------|---------------------|-------------------|
| 1. Type A | LinmoreLED          | ES40 Wet Location |

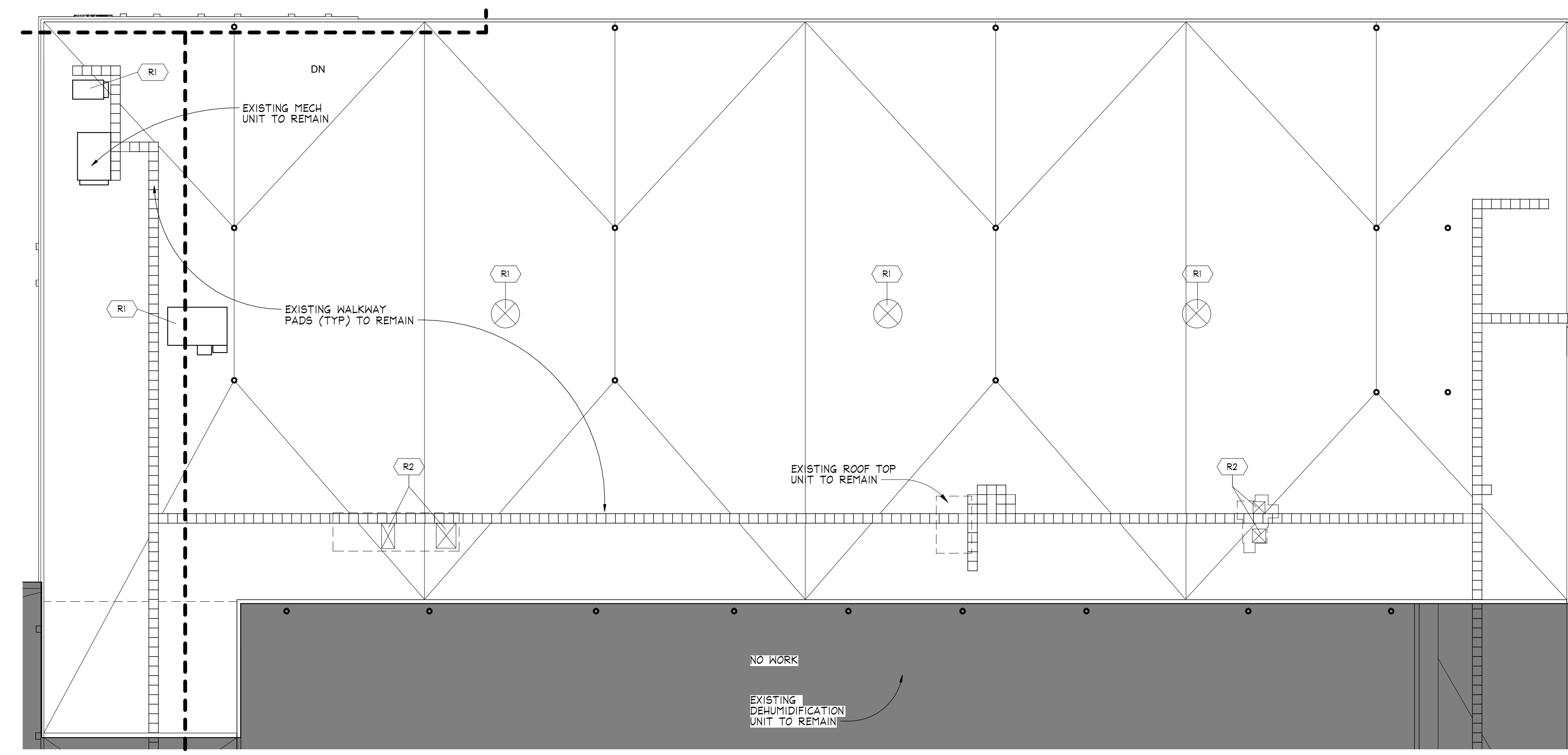
**End of Addendum B**



VICINITY MAP FOR REFERENCE  
NOT TO SCALE



2 NORTH RINK FIREWALL ELEVATION  
SCALE: 1/8" = 1'-0"



1 ROOF PLAN - NORTH RINK  
SCALE: 1/16" = 1'-0"

**GENERAL ROOF NOTES**

- CONTRACTOR SHALL PROTECT EXISTING TPO ROOF MEMBRANE FROM DAMAGE DURING ALL CONSTRUCTION OPERATIONS. PROVIDE TEMPORARY PROTECTION AS REQUIRED. ANY DAMAGE TO THE MEMBRANE OR FLASHING CAUSED BY CONSTRUCTION ACTIVITIES SHALL BE REPAIRED BY A QUALIFIED ROOFING CONTRACTOR IN ACCORDANCE WITH MANUFACTURER'S REQUIREMENTS, AT NO COST TO THE OWNER, AND SHALL NOT VOID EXISTING ROOF WARRANTIES.

**ROOF KEYNOTES**

- R1 PATCH ROOF AT REMOVED MECHANICAL UNITS. FOLLOWING INSTALLATION OF NEW DECKING BY BID PKG 8A/8B, PROVIDE INSULATION AND COVERBOARD TO MATCH EXISTING. PATCH AND WELD TPO MEMBRANE TO FULLY INTEGRATE WITH EXISTING ROOF SYSTEM AND MAINTAIN OWNER'S ROOF WARRANTY.
- R2 FLASH NEW ROOFTOP EQUIPMENT CURBS. CUT AND REMOVE EXISTING TPO MEMBRANE, COVERBOARD, AND INSULATION TO CREATE NEW OPENINGS. FOLLOWING CURB AND DECK OPENING INSTALLATION BY BID PKGS 23 & 8A/8B (RESPECTIVELY) FULLY FLASH, WELD, AND SEAL TPO MEMBRANE AT NEW EQUIPMENT CURBS IN ACCORDANCE WITH MANUFACTURER'S REQUIREMENTS TO MAINTAIN OWNER'S ROOF WARRANTY.



# MAPS SPORTS CENTER NORTH RINK MECHANICAL UPGRADES

2300 4th Ave S, Moorhead, MN 56560

**INDEX OF DRAWINGS**

ARCHITECTURAL	
A3.00	COVER, ROOF PLAN, INTERIOR ELEVATION, VICINITY PLAN
A3.01	PROJECT FLOOR PLANS, RCP, INTERIOR IMAGES
STRUCTURAL	
S2.01	EXISTING ROOF FRAMING PLAN
MECHANICAL	
M000	MECHANICAL COVER SHEET
M300	HVAC DEMO PLAN - FIRST FLOOR
M301	HVAC PLAN - FIRST FLOOR
M302	HVAC PLAN - ROOF
M500	MECHANICAL DETAILS & SCHEDULE
M600	MECHANICAL CONTROLS
ELECTRICAL	
E0.01	SYMBOLS LEGEND & LUMINAIRE SCHEDULE
E1.01	ELECTRICAL DEMOLITION PLAN
E2.01	MAIN FLOOR PLAN - ELECTRICAL
E3.01	ROOF PLAN - ELECTRICAL


**BID PACKAGES**

5A/5B	Miscellaneous Metals
9B	Drywall
9I	Painting
23	HVAC and Temperature Controls
26	Electrical Systems

**REVISION SCHEDULE**


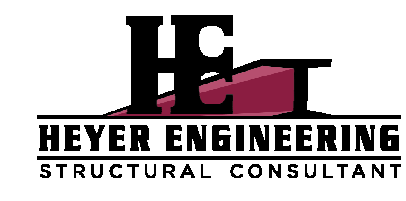

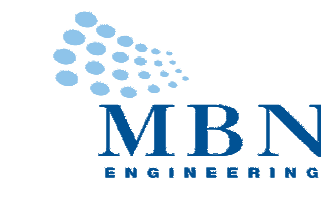

NUMBER	DESCRIPTION	DATE
01	ADDENDUM B	2026-02-05

I hereby certify that this plan, specification, or report was prepared by me or under my direct supervision and that I am a duly Licensed Architect under the laws of the State of

Date: 2026-01-22 Registration No. 41686  
  
 Date: 2026-01-22 Project No.: 25-029



**A3.00**

<p><b>ARCHITECT:</b>          ZERR BERG ARCHITECTS          510 4TH AVE. N.          FARGO, ND 58102          P: 701.280.0187          F: 701.280.9021</p> 	<p><b>STRUCTURAL ENGINEER:</b>          HEYER ENGINEERING          4180 24TH AVE. S          FARGO, ND 58104          P: 701.280.0949          F: 701.280.9686</p> 	<p><b>MECHANICAL ENGINEER:</b>          MARTIN MECHANICAL DESIGN          1201 25TH AVE. N          FARGO, ND 58103          P: 701.293.7957</p> 	<p><b>ELECTRICAL ENGINEER:</b>          MBN ENGINEERING          701 MAIN AVE          FARGO, ND 58103          P: 701.297.0704          F: 701.478.6340</p> 	<p><b>CONSTRUCTION MANAGER:</b>          GEHRTZ CONSTRUCTION SERVICES          510 4TH AVE. N.          FARGO, ND 58102          P: 701.297.0704          F: 701.280.9021</p> 
--	--	--	--	---

IMAGES

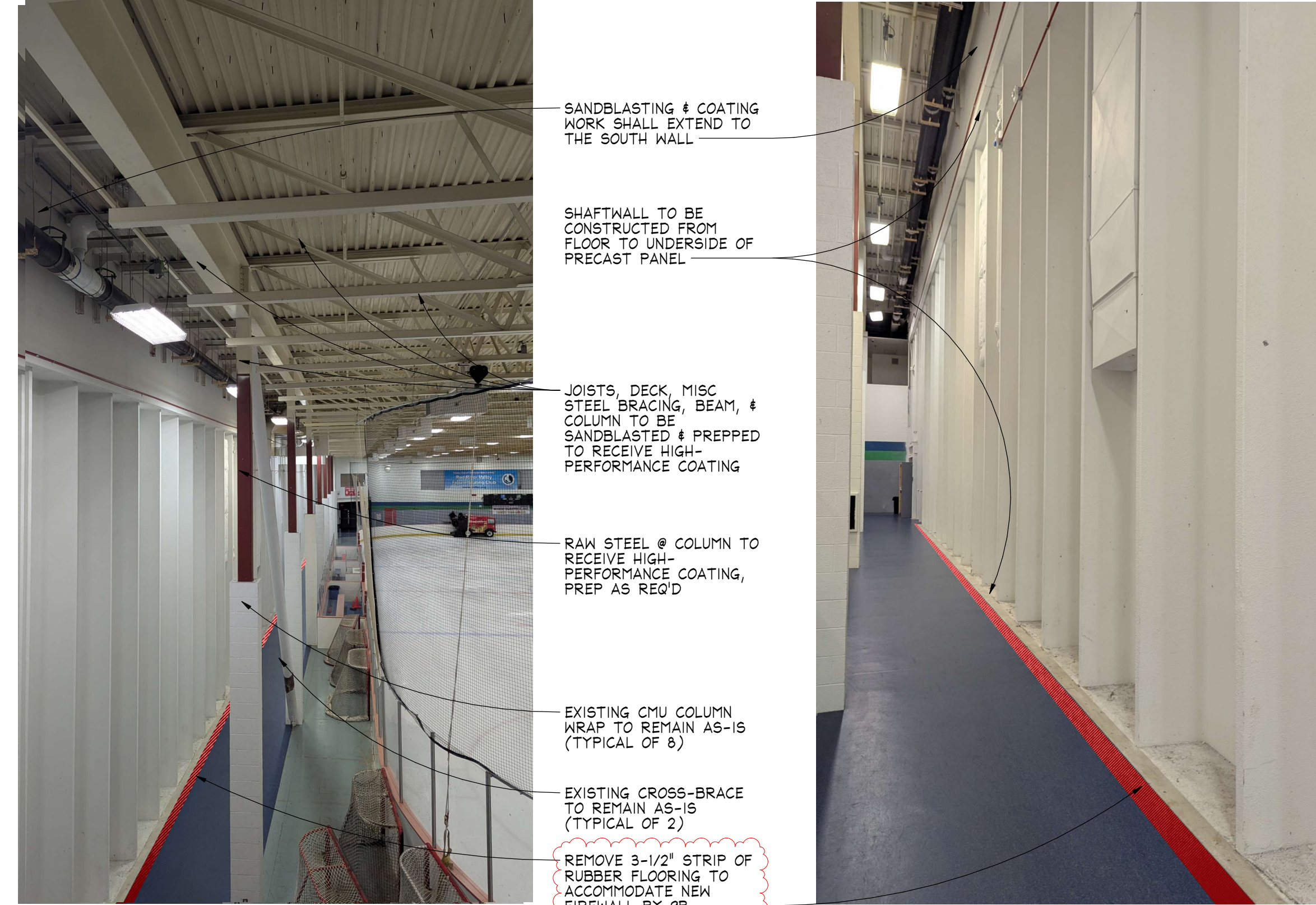


IMAGE 1  
SOUTH INTERIOR WALL & COLUMN LINE  
(LOOKING WEST)

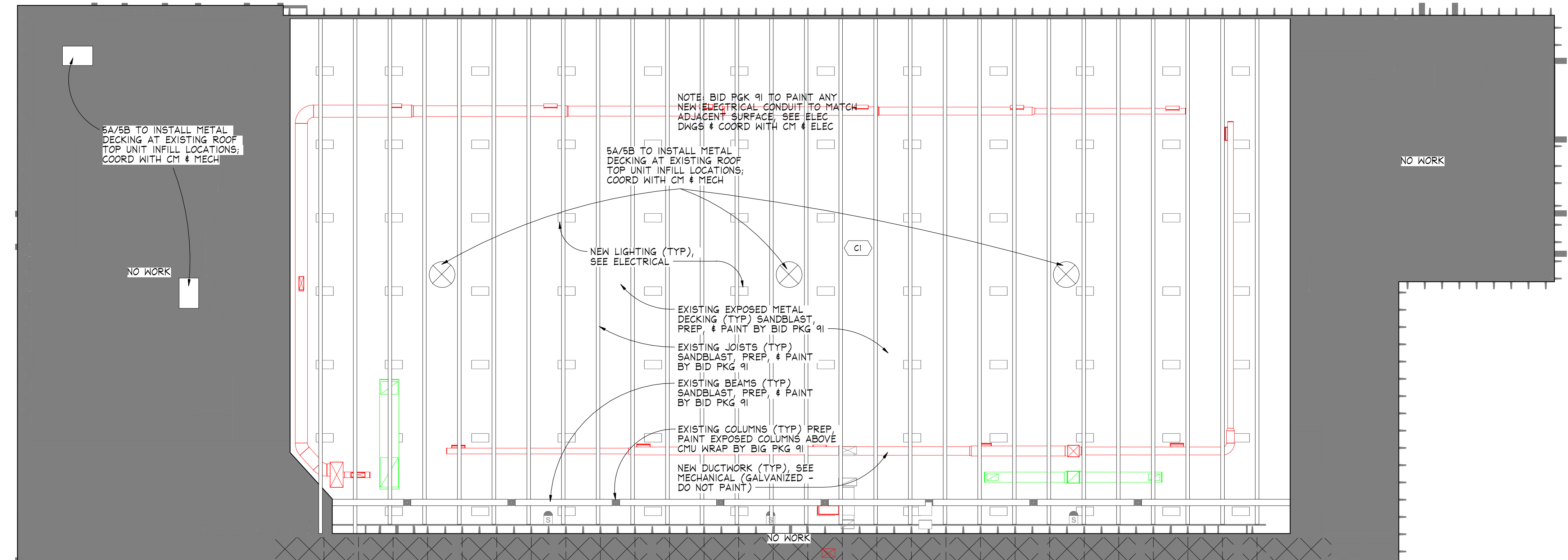
IMAGE 2  
SOUTH INTERIOR WALL  
(LOOKING EAST)



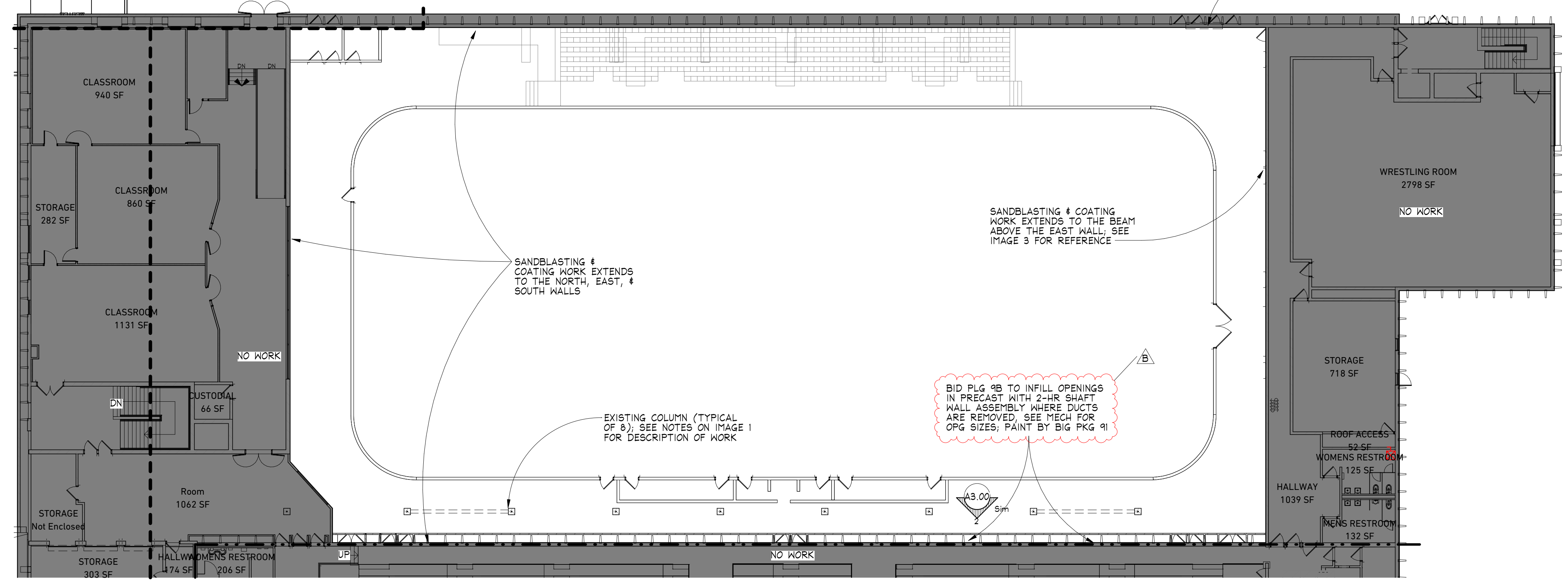
IMAGE 3  
EAST INTERIOR WALL & COLUMN LINE  
(LOOKING EAST)



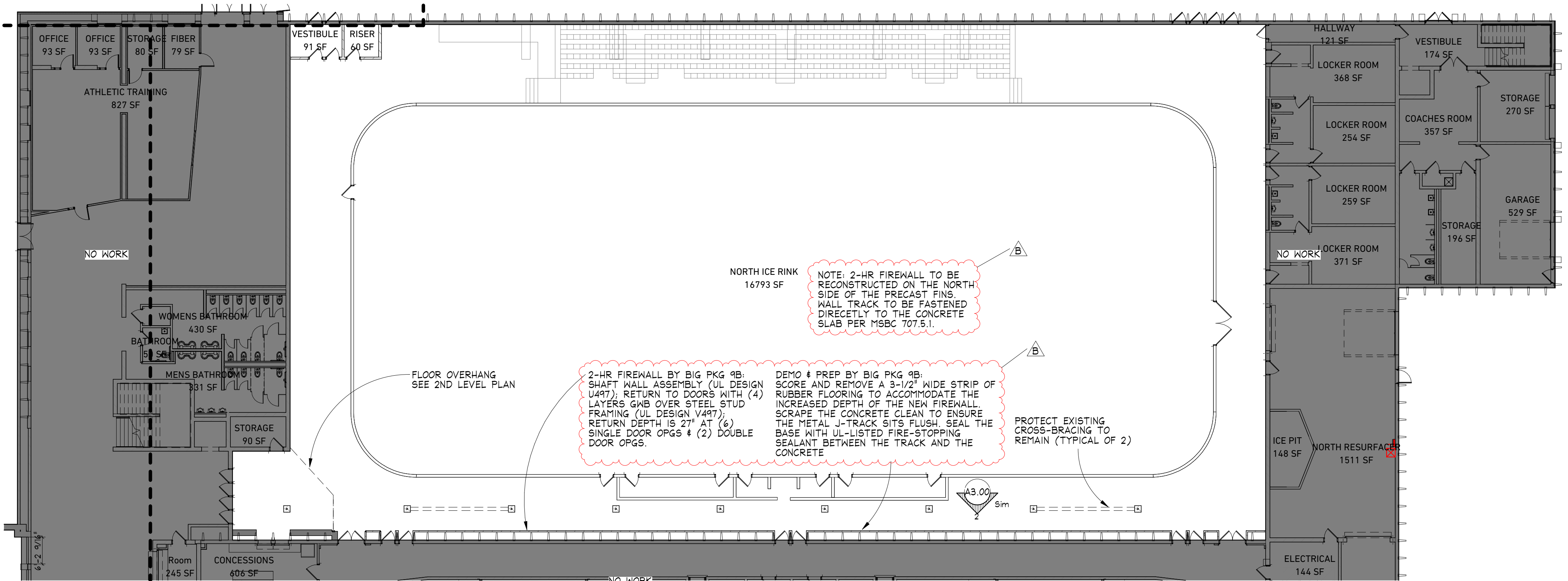
IMAGE 4  
SOUTHWEST WALL AT DOOR ALCOVE  
(LOOKING SOUTH)



3 REFLECTED CEILING PLAN - NORTH RINK  
SCALE: 1/16" = 1'-0"



2 SECOND LEVEL FLOOR PLAN - NORTH RINK  
SCALE: 1/16" = 1'-0"



1 MAIN LEVEL FLOOR PLAN - NORTH RINK  
SCALE: 1/16" = 1'-0"

GENERAL NOTES

- PROTECT EXISTING FINISHES TO REMAIN.
- PROTECT ALL EQUIPMENT THAT REMAINS WITHIN THE SPACE (EXISTING BLEACHERS, DASHER BOARDS, ETC).
- PAINTING CONTRACTOR TO POLY AS NEEDED TO DIRECT SAND & DEBRIS TO A COLLECTION POINT WITHIN THE FOOTPRINT OF THE RINK.

RCP KEYNOTES

- C1 SANDBLAST EXISTING JOISTS, DECK, ROOF SUPPORT BEAMS, CROSS-BRACING, AND MISCELLANEOUS REINFORCING STEEL WITHIN THE JOIST SPACE IN PREPARATION TO RECEIVE NEW PAINTED FINISH. VISIT SITE PRIOR TO BIDDING TO VERIFY EXTENT OF WORK.

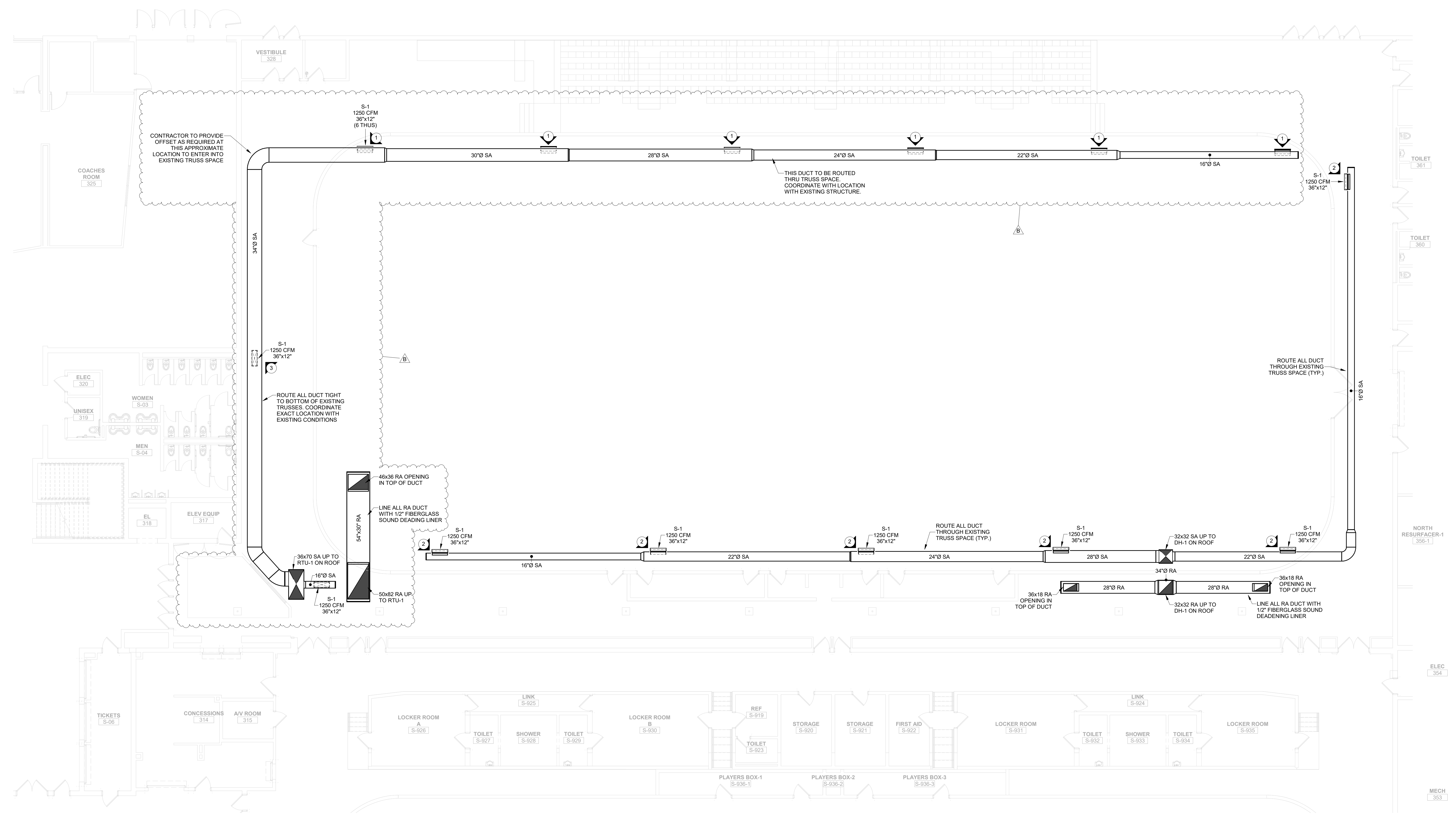
REVISION SCHEDULE	NUMBER	DESCRIPTION	DATE
	B	ADDENDUM B	2024-02-05



**MAPS SPORTS CENTER**  
**NORTH RINK**  
**MECHANICAL UPGRADES**  
2300 4th Ave S, Moorhead, MN 56560

PROJECT FLOOR PLANS AND RCP

- MECHANICAL KEY NOTES:**
- 1 ALL DIFFUSERS DIRECTED AT OUTSIDE WALL TO BE INSTALLED AT 45 DEGREES BELOW HORIZONTAL.
  - 2 ALL DIFFUSERS DIRECTED OVER THE ICE RINK SHALL BE INSTALLED AT 30 DEGREES ABOVE HORIZONTAL TO DIRECT AIRFLOW ACROSS ROOF DECK.
  - 3 DIFFUSER SHALL BE MOUNTED FACING ON BOTTOM OF DUCT FACING FLOOR AREA.



I HEREBY CERTIFY THAT THIS PLAN, SPECIFICATION OR REPORT WAS PREPARED BY ME OR UNDER MY DIRECT SUPERVISION AND THAT I AM DULY LICENSED ENGINEER UNDER THE LAWS OF THE STATE OF MINNESOTA.

DATE: 01/21/2026 REGT. NO. 41118

SIGNED:  
 BRIAN M MARTIN

REVISION SCHEDULE	
NUMBER	DESCRIPTION
B	ADDENDUM MB
	DATE: 02/05/26

1 FIRST FLOOR HVAC PLAN  
 M301 1/8" = 1'-0"

HVAC PLAN - FIRST FLOOR

