



Addendum		Addendum No.:	BP2.0R1, ADD 5.0
		RML Project No.:	22.1010
Date of Addendum:	05/27/2026		
Project Name:	Parshall Hotel and Laundromat Parshall, ND		
Owner Name:	Three Affiliated Tribes of North Dakota MHA Nation 307 5 th Avenue, New Town, ND 58763		
<p>This Addendum forms part of the Contract Documents and modifies the Bid Package 2.0R1 “Bid Documents Issued for Rebid” dated 05/04/2026. Additions, omissions, clarifications, and corrections to the Contract Documents contained herein shall be included in the Work. Reference made to the Project Manual and Drawings shall be used as a guide only. Bidders shall determine the Work affected by the Addendum items described. Acknowledgement of receipt of this Addendum is required in the space provided on the Bid Form.</p>			

CHANGES TO THE DRAWINGS

- A. Sheet A080 Door Schedule, Door and Frame Types, Window and Louver Types**
 - 1. Door and Frame Schedule – First Floor Hotel
 - a. Add remark 12 to Doors 101, 102, 118A, 118B, 119, 121, 122, 124 124, A1.1 and B1.1
 - 2. Door and Frame Schedule – Laundromat
 - a. Add remark 12 to Doors L101 and L101A.
 - 3. Door Schedule Remarks
 - a. Add remark 12.

- B. Sheet I101 Room Finish Schedule (reissued)**
 - 1. Room L102
 - a. Change floor finish to “LVT-5/LVT-7/LVT-7” in lieu of “CPT-8”.
 - 2. Room L103
 - a. Change room number to “L103” in lieu of “L110”.

- C. Sheet I201 First Floor Finish Plan (reissued)**
 - 1. Drawing 1 First Floor Plan
 - a. Extend floor finishes in Corridor A from Grid C to end of corridor.

- D. Sheet I601 Enlarged First Floor Plan (reissued)**
 - 1. Drawing 1 Enlarged First Floor Plan Area A



- a. Extend floor finishes in Corridor A from Grid C to end of corridor.
- b. Revise hatch pattern for floor finish in Kitchen 112 to indicate vinyl sheet flooring in lieu of tile.
- c. Change floor finish to "LVT-5/LVT-7/LVT-7" in lieu of "CPT-8" in Room L102 Vending/Seating.
 - 1) Change floor hatch pattern in Room L102 to indicate LVT in lieu of carpet.

E. Clarification of Work Scope for Floor Finishes, Doors, Windows and Millwork

1. Sheets A201 and A202
 - a. To assist Bidders with clarifying work scopes for floor finishes, doors, windows and millwork, graphical representations have been placed on the First Floor Plan and Second Floor Plan.
 - b. These sheets are issued for clarification purposes only. Bidders should continue to use Drawings and Specifications that were issued on 05/04/2026 and any subsequent addendums for more information.

**End of Narrative for
Addendum No. BP2.0R1, ADD5.0**

PARSHALL HOTEL AND LAUNDROMAT DOOR AND FRAME SCHEDULE - FIRST FLOOR HOTEL														
MARK	ROOM NAME	DOOR				FRAME			FIRE RATING	DETAIL			HARDWARE GROUP	COMMENTS
		TYPE	WIDTH	HEIGHT	FINISH	GLAZING	TYPE	FINISH		GLAZING	HEAD	JAMB		
FIRST LEVEL T/O DECK														
101	VESTIBULE	AL-SL-BP	9'-8 1/2"	7'-0"	ANOD	GL-2T	-	ANOD	GL-2T	None			12	4, 7, 12
102	VESTIBULE	AL-SL-BP	9'-8 1/2"	7'-0"	ANOD	GL-1T	-	ANOD	GL-1T	None			12	4, 7, 12
104	OFFICE	WD-F	3'-0"	6'-8"	HPDL	-	HM-KD-1	PREF	-	20 MIN			07	
105	FACILITY LAUNDRY	WD-F	3'-0"	6'-8"	HPDL	-	HM-KD-1	PREF	-	20 MIN			07A	11
105A	FACILITY LAUNDRY	WD-F	3'-6"	6'-8"	HPDL	-	HM-KD-1	PREF	-	20 MIN			07B	11
105B	FACILITY LAUNDRY	WD-F	2'-4"	6'-8"	HPDL	-	HM-KD-1	PREF	-	-			01	
107	CORRIDOR A	HM-F-INS	3'-6"	7'-0"	PT	-	HM-2	PT	-	-			19	2, 3
108	WATER SERVICE AND FIRE RISER	WD-F	3'-0"	6'-8"	HPDL	-	HM-KD-1	PREF	-	60 MIN			10	
108A	WATER SERVICE AND FIRE RISER	HM-F-INS	3'-0"	7'-0"	PT	-	HM-2	PT	-	-			09	
109	MECHANICAL ELECTRICAL	WD-F	3'-6"	6'-8"	HPDL	-	HM-KD-1	PREF	-	20 MIN			10	
109A	MECHANICAL ELECTRICAL	HM-F-INS	3'-0"	7'-0"	PT	-	HM-2	PT	-	-			11	
110	MAIN DISTRIBUTION FRAME	WD-F	3'-6"	6'-8"	HPDL	-	HM-KD-1	PREF	-	-			10A	
111	CARETAKER	WD-F	3'-0"	6'-8"	HPDL	-	HM-KD-1	PREF	-	20 MIN			07C	11
111A	CARETAKER	MDF-SR	2'-8"	6'-8"	PT	-	PRHNG	PT	-	-			21	
111B	CARETAKER	MDF-SR	2'-8"	6'-8"	PT	-	PRHNG	PT	-	-			22	
111C	CARETAKER	MDF-SR	2'-8"	6'-8"	PT	-	PRHNG	PT	-	-			21	
111D	CARETAKER	MDF-SR	5'-0"	6'-8"	PT	-	PRHNG	PT	-	-			25	
111E	CARETAKER	MDF-SR-BF	3'-0"	6'-8"	PT	-	WD-PH	PT	-	-			26	
112	KITCHEN	WD-F	3'-6"	6'-8"	HPDL	-	HM-KD-1	PREF	-	20 MIN			07B	11
113	CUSTODIAN	WD-F	3'-0"	6'-8"	HPDL	-	HM-KD-1	PREF	-	20 MIN			07D	11
114	UNISEX TOILET	WD-F	3'-0"	6'-8"	HPDL	-	HM-KD-1	PREF	-	20 MIN			06	2
118	SERVERY	WD-F	3'-0"	6'-8"	HPDL	-	HM-KD-1	PREF	-	20 MIN			08A	2
118A	SERVERY	WD-BP-P	4'-6"	7'-0"	HPDL	-	-	-	-	-			20	12
118B	SERVERY	WD-BP-P	4'-6"	7'-0"	HPDL	-	-	-	-	-			20	12
119	CONFERENCE & MULTIPURPOSE	WD-FP	15'-0"	8'-0"	ST	GL-5	-	ST	-	-			12	4, 6, 12
121	HALL	HM-F	6'-0"	7'-0"	PT	-	HM-1	PT	-	20 MIN			05	9, 12
122	FITNESS	WD-FG	3'-0"	6'-8"	HPDL	GL-1T	HM-KD	PREF	GL-1T	-			15	12
123	ELECTRICAL	WD-F	3'-0"	6'-8"	HPDL	-	HM-KD-1	PREF	-	-			10	12
124	UNISEX TOILET	WD-F	3'-0"	6'-8"	HPDL	-	HM-KD-1	PREF	-	-			06	12
126	DOUBLE QUEEN SUITE	WD-F	3'-0"	6'-8"	HPDL	-	HM-KD-1	PREF	-	20 MIN			23	10
126A	DOUBLE QUEEN SUITE	WD-F	3'-0"	6'-8"	HPDL	-	HM-KD-1	PREF	-	-			21	
127	KING SUITE	WD-F	3'-0"	6'-8"	HPDL	-	HM-KD-1	PREF	-	20 MIN			23	10
127A	KING SUITE	WD-F	3'-0"	6'-8"	HPDL	-	HM-KD-1	PREF	-	-			21	
128	KING SUITE	WD-F	3'-0"	6'-8"	HPDL	-	HM-KD-1	PREF	-	20 MIN			23	10
128A	KING SUITE	WD-F	3'-0"	6'-8"	HPDL	-	HM-KD-1	PREF	-	-			21	
129	CORRIDOR B	WD-F	3'-0"	6'-8"	HPDL	-	HM-KD-1	PREF	-	20 MIN			23	10
129A	DOUBLE QUEEN SUITE	WD-F	3'-0"	6'-8"	HPDL	-	HM-KD-1	PREF	-	-			21	
130	DOUBLE QUEEN STANDARD	WD-F	3'-0"	6'-8"	HPDL	-	HM-KD-1	PREF	-	20 MIN			23	10
130A	DOUBLE QUEEN STANDARD	WD-F	3'-0"	6'-8"	HPDL	-	HM-KD-1	PREF	-	-			21	
131	DOUBLE QUEEN STANDARD	WD-F	3'-0"	6'-8"	HPDL	-	HM-KD-1	PREF	-	20 MIN			23	10
131A	DOUBLE QUEEN STANDARD	WD-F	3'-0"	6'-8"	HPDL	-	HM-KD-1	PREF	-	-			21	
132	KING STANDARD	WD-F	3'-0"	6'-8"	HPDL	-	HM-KD-1	PREF	-	20 MIN			23	10
132A	KING STANDARD	WD-F	3'-0"	6'-8"	HPDL	-	HM-KD-1	PREF	-	-			21	
133	KING STANDARD	WD-F	3'-0"	6'-8"	HPDL	-	HM-KD-1	PREF	-	20 MIN			23	10
133A	KING STANDARD	WD-F	3'-0"	6'-8"	HPDL	-	HM-KD-1	PREF	-	-			21	
134	DOUBLE QUEEN STANDARD	WD-F	3'-0"	6'-8"	HPDL	-	HM-KD-1	PREF	-	20 MIN			23	10
134A	DOUBLE QUEEN STANDARD	WD-F	3'-0"	6'-8"	HPDL	-	HM-KD-1	PREF	-	-			21	
135	DOUBLE QUEEN STANDARD	WD-F	3'-0"	6'-8"	HPDL	-	HM-KD-1	PREF	-	20 MIN			23	10
135A	DOUBLE QUEEN STANDARD	WD-F	3'-0"	6'-8"	HPDL	-	HM-KD-1	PREF	-	-			21	
136	KING STANDARD	WD-F	3'-0"	6'-8"	HPDL	-	HM-KD-1	PREF	-	20 MIN			23	10
136A	KING STANDARD	WD-F	3'-0"	6'-8"	HPDL	-	HM-KD-1	PREF	-	-			21	
137	KING STANDARD	WD-F	3'-0"	6'-8"	HPDL	-	HM-KD-1	PREF	-	20 MIN			23	10
137A	KING STANDARD	WD-F	3'-0"	6'-8"	HPDL	-	HM-KD-1	PREF	-	-			21	
139	HOUSEKEEPING AND LINEN STORAGE	WD-F	3'-6"	6'-8"	HPDL	-	HM-KD-1	PREF	-	20 MIN			07B	11
140	STAFF TOILET	WD-F	3'-0"	6'-8"	HPDL	-	HM-KD-1	PREF	-	-			06	
A1	STAIR A	WD-NV	3'-0"	6'-8"	HPDL	GL-4	HM-KD-1	PREF	-	60 MIN			18	2
A1.1	STAIR A	AL-FG	3'-0"	7'-2"	ANOD	GL-2T	SF-3	ANOD	GL-2T	-			17	2, 3, 10, 12
B1	STAIR B	WD-NV	3'-0"	6'-8"	HPDL	GL-4	HM-KD-1	PREF	-	60 MIN			18	
B1.1	STAIR B	AL-FG	3'-0"	7'-2"	ANOD	GL-2T	SF-3	ANOD	GL-2T	-			17	2, 3, 10, 12

PARSHALL HOTEL AND LAUNDROMAT DOOR AND FRAME SCHEDULE - SECOND FLOOR HOTEL														
MARK	ROOM NAME	DOOR				FRAME			FIRE RATING	DETAIL			HARDWARE GROUP	COMMENTS
		TYPE	WIDTH	HEIGHT	FINISH	GLAZING	TYPE	FINISH		GLAZING	HEAD	JAMB		
SECOND LEVEL T/O DECK														
202	KING ACCESSIBLE	WD-F	3'-0"	6'-8"	HPDL	-	HM-KD-1	PREF	-	20 MIN			23	10
203	KING ACCESSIBLE	WD-F	3'-0"	6'-8"	HPDL	-	HM-KD-1	PREF	-	-			21	
202A	DOUBLE QUEEN ACCESSIBLE	WD-F	3'-0"	6'-8"	HPDL	-	HM-KD-1	PREF	-	20 MIN			23	10
203A	DOUBLE QUEEN ACCESSIBLE	WD-F	3'-0"	6'-8"	HPDL	-	HM-KD-1	PREF	-	-			21	
204	DOUBLE QUEEN STANDARD	WD-F	3'-0"	6'-8"	HPDL	-	HM-KD-1	PREF	-	20 MIN			23	10
204A	DOUBLE QUEEN STANDARD	WD-F	3'-0"	6'-8"	HPDL	-	HM-KD-1	PREF	-	-			21	
205	DOUBLE QUEEN STANDARD	WD-F	3'-0"	6'-8"	HPDL	-	HM-KD-1	PREF	-	20 MIN			23	10
205A	DOUBLE QUEEN STANDARD	WD-F	3'-0"	6'-8"	HPDL	-	HM-KD-1	PREF	-	-			21	
206	KING STANDARD	WD-F	3'-0"	6'-8"	HPDL	-	HM-KD-1	PREF	-	20 MIN			23	10
206A	KING STANDARD	WD-F	3'-0"	6'-8"	HPDL	-	HM-KD-1	PREF	-	-			21	
207	DOUBLE QUEEN SUITE	WD-F	3'-0"	6'-8"	HPDL	-	HM-KD-1	PREF	-	20 MIN			23	10
208		WD-F	3'-0"	6'-8"	HPDL	-	HM-KD-1	PREF	-	20 MIN			23	10
209	KING SUITE	WD-F	3'-0"	6'-8"	HPDL	-	HM-KD-1	PREF	-	20 MIN			23	10
209A	KING SUITE	WD-F	3'-0"	6'-8"	HPDL	-	HM-KD-1	PREF	-	-			21	
209D	DOUBLE QUEEN SUITE	WD-F	3'-0"	6'-8"	HPDL	-	HM-KD-1	PREF	-	-			21	
209F		WD-F	3'-0"	6'-8"	HPDL	-	HM-KD-1	PREF	-	-			21	
210	KING STANDARD	WD-F	3'-0"	6'-8"	HPDL	-	HM-KD-1	PREF	-	20 MIN			23	10
210A	KING STANDARD	WD-F	3'-0"	6'-8"	HPDL	-	HM-KD-1	PREF	-	-			21	
211	DOUBLE QUEEN STANDARD	WD-F	3'-0"	6'-8"	HPDL	-	HM-KD-1	PREF	-	20 MIN			23	10
211A	DOUBLE QUEEN STANDARD	WD-F	3'-0"	6'-8"	HPDL	-	HM-KD-1	PREF	-	-			21	
212	DOUBLE QUEEN STANDARD	WD-F	3'-0"	6'-8"	HPDL	-	HM-KD-1	PREF	-	20 MIN			23	10
212A	DOUBLE QUEEN STANDARD	WD-F	3'-0"	6'-8"	HPDL	-	HM-KD-1	PREF	-	-			21	
213	KING STANDARD	WD-F	3'-0"	6'-8"	HPDL	-	HM-KD-1	PREF	-	20 MIN			23	10
213A	KING STANDARD	WD-F	3'-0"	6'-8"	HPDL	-	HM-KD-1	PREF	-	-			21	
214	KING STANDARD	WD-F	3'-0"	6'-8"	HPDL	-	HM-KD-1	PREF	-	20 MIN			23	10
214A	KING STANDARD	WD-F	3'-0"	6'-8"	HPDL	-	HM-KD-1	PREF	-	-			21	
215	DOUBLE QUEEN SUITE	WD-F	3'-0"	6'-8"	HPDL	-	HM-KD-1	PREF	-	20 MIN			23	10
215A	DOUBLE QUEEN SUITE	WD-F	3'-0"	6'-8"	HPDL	-	HM-KD-1	PREF	-	-			21	
216	DOUBLE QUEEN STANDARD	WD-F	3'-0"	6'-8"	HPDL	-	HM-KD-1	PREF	-	20 MIN			23	10
216A	DOUBLE QUEEN STANDARD	WD-F	3'-0"	6'-8"	HPDL	-	HM-KD-1	PREF	-	-			21	
217	KING SUITE	WD-F	3'-0"	6'-8"	HPDL	-	HM-KD-1	PREF	-	20 MIN			23	10
217A	KING SUITE	WD-F	3'-0"	6'-8"	HPDL	-	HM-KD-1	PREF	-	-			21	
218	KING STANDARD	WD-F	3'-0"	6'-8"	HPDL	-	HM-KD-1	PREF	-	20 MIN			23	10
218A	KING STANDARD	WD-F	3'-0"	6'-8"	HPDL	-	HM-KD-1	PREF	-	-			21	
219	DOUBLE QUEEN STANDARD	WD-F	3'-0"	6'-8"	HPDL	-	HM-KD-1	PREF	-	20 MIN			23	10
219A	DOUBLE QUEEN STANDARD	WD-F	3'-0"	6'-8"	HPDL	-	HM-KD-1	PREF	-	-			21	
220	DOUBLE QUEEN STANDARD	WD-F	3'-0"	6'-8"	HPDL	-	HM-KD-1	PREF	-	20 MIN			23	10
220A</														

ROOM FINISH SCHEDULE									
ROOM NO.	NAME	FLOOR	BASE	WALL FINISHES				CEILING MATERIAL	NOTES
				NORTH	EAST	SOUTH	WEST		
101	VESTIBULE		CPT-4	VB-3	PT-1	PT-1	PT-1	PT-1	ACP-1
102	LOBBY		LVT-1	VB-2	PT-1	PT-1WC-4	PT-1	PT-9/PT-1	GYP
103	CHECK-IN		LVT-1	VB-2	PT-1	PT-1WC-4	PT-1	PT-9/PT-1	GYP
104	OFFICE		CPT-7	VB-3	PT-1	PT-1	PT-1	PT-1	ACP-1
105	FACILITY LAUNDRY		LVT-3	VB-1	PT-1	PT-1	PT-1	PT-1	ACP-1
106	CORRIDOR A		CPT-2/LVT-1	VB-2	PT-1WC-3	PT-1	PT-1WC-3	PT-1	ACP-1
107	SERVICE CORRIDOR		CPT-4	VB-3	PT-1	PT-1	PT-1	PT-1	GYP
108	WATER SERVICE AND FIRE RISER		LVT-3	VB-1	PT-1	PT-1	PT-1	PT-1	ACP-1
109	MECHANICAL ELECTRICAL		LVT-3	VB-1	PT-1	PT-1	PT-1	PT-1	ACP-1
110	MAIN DISTRIBUTION FRAME		LVT-3	VB-1	PT-1	PT-1	PT-1	PT-1	ACP-1
111	CARETAKER		CPT-6	B-5	PT-1	PT-1	PT-1	PT-1	GYP
112	KITCHEN		VSP-1	VB-3	PT-1	PT-1	PT-1	PT-1	ACP-1
113	CUSTODIAN		LVT-3	VB-1	PT-1	PT-1	PT-1	PT-1	ACP-1
114	UNISEX TOILET		CFT-1	B-7	PT-1WC-7	PT-1WC-7	PT-1WC-7	PT-1WC-7	ACP-1
115	COMMONS		CPT-5	VB-10	PT-1	PT-1	PT-1	PT-1	GYP
116	MARKET		LVT-1	VB-2	PT-1	PT-1	PT-1	PT-1	ACP-1
117	DINING & COMMUNITY AREA		LVT-1	VB-2	PT-2	PT-1	PT-1	PT-1	GYP
118	SERVERY		LVT-1	VB-2	PT-1/FRP-2	PT-1/FRP-2	PT-1	PT-1/FRP-2	ACP-1
119	CONFERENCE & MULTIPURPOSE		CPT-3	VB-10	PT-1	WC-5	PT-1/PT-2	PT-1	GYP&ACP-1
120	ELEVATOR		LVT-2	-	-	-	-	-	-
121	HALL		LVT-1	VB-2	PT-1	PT-1	PT-1	PT-1	ACP-1
122	FITNESS		RFT-1	VB-3	PT-1	PT-1	PT-1	PT-1	ACP-1
123	ELECTRICAL		LVT-3	VB-1	PT-1	PT-1	PT-1	PT-1	ACP-1
124	UNISEX TOILET		CFT-1	B-7	PT-1WC-7	PT-1WC-7	PT-1WC-7	PT-1WC-7	ACP-1
125	CORRIDOR B		CPT-2/LVT-1	VB-2	PT-1WC-3	PT-1	PT-1WC-3	PT-1	GYP
138	ICE & VENDING		LVT-1	VB-2	PT-1	PT-1	PT-1	PT-1	ACP-1
139	HOUSEKEEPING & STORAGE		LVT-3	VB-1	PT-1	PT-1	PT-1	PT-1	ACP-1
140	STAFF TOILET		CFT-1	B-7	PT-1	PT-1	PT-1	PT-1	ACP-1
226	STORAGE		LVT-3	VB-1	PT-1	PT-1	PT-1	PT-1	GYP
228	HALL		LVT-1	VB-2	PT-1	PT-1	PT-1	PT-1	ACP-1
229	ICE & VENDING		LVT-1	VB-2	PT-1	PT-1	PT-1	PT-1	ACP-1
230	UNISEX TOILET		CFT-1	B-7	PT-1WC-7	PT-1WC-7	PT-1WC-7	PT-1WC-7	ACP-1
231	ELECTRICAL		LVT-3	VB-1	PT-1	PT-1	PT-1	PT-1	ACP-1
232	CLEAN LINEN		LVT-3	VB-1	PT-1	PT-1	PT-1	PT-1	ACP-1
233	HOUSEKEEPING AND STORAGE		LVT-3	VB-1	PT-1	PT-1	PT-1	PT-1	ACP-1
234	STORAGE		LVT-3	VB-1	PT-1	PT-1	PT-1	PT-1	ACP-1
A2	STAIR A		CPT-7	VB-3	PT-1	PT-1	PT-1	PT-1	GYP
B2	STAIR B		CPT-7	VB-3	PT-1	PT-1	PT-1	PT-1	GYP
E2	ELEVATOR		LVT-2	-	-	-	-	-	-
L101	VESTIBULE		CPT-4	VB-3	PT-1	PT-1	PT-1	PT-1	ACP-1
L102	VENDING/SEATING		LVT-SLVT-6/LVT-7	VB-3	PT-1	PT-1	PT-1	PT-1	ACP-1
L103	WASH AND DRY AREA		LVT-SLVT-6/LVT-7	VB-3	PT-1/PT-8	PT-1	PT-1/PT-8	PT-1	ACP-1
L104	UNISEX TOILET		CFT-3	B-9	PT-1	PT-1	PT-1	PT-1	ACP-1
L105	UNISEX TOILET		CFT-3	B-9	PT-1	PT-1	PT-1	PT-1	ACP-1
L106	STORAGE		LVT-3	VB-1	PT-1	PT-1	PT-1	PT-1	ACP-1
L107	HALL		LVT-SLVT-6/LVT-7	VB-3	PT-1	PT-1	PT-1	PT-1	ACP-1
L108	MECHANICAL ELECTRICAL		LVT-3	VB-1	PT-1	PT-1	PT-1	PT-1	ACP-1
L109	DRYER SERVICE AREA		LVT-3	VB-1	PT-1	PT-1	PT-1	PT-1	ACP-1



275 Market Street, Suite 213
 Minneapolis, MN 55405-1624
 612.429.0103
 www.rmlarchitects.com



HEADWATERS
 Headwaters Development
 2327 Northrup Street NE
 Shoreline, WA 98133

Boelter
 CONSULTANTS
 7100 Northland Terrace N
 Minneapolis, MN 55432

Consultants



Mandan, Hidatsa and Arikara Nation
 Three Affiliated Tribes of North Dakota
 307 5th Avenue
 New Town, ND 58763

Owner

**Parshall
 Hotel
 and
 Laundromat**
 205 MAIN STREET
 PARSHALL, ND 58770

Jurisdictional Approval

Certification

REBID DOCUMENTS

Project Phase		
Revisions		
No.	Date	Revision Description
	12/01/2025	MODULAR PACKAGE
	12/12/2025	MODULAR FABRICATION
	01/06/2025	ISSUED FOR BID, BP2.0R
1	01/30/2026	BP2.0R, ADD3.0
	05/04/2026	ISSUED FOR REBID BP2.0R1
2	05/27/2026	BP2.0R1.ADD5.0

ROOM FINISH SCHEDULE

Project No.: 22.1010 SHEET NUMBER
 Date: 05/27/2026
 Drawn by: IE
 Checked by: CP
1101
 Copyright © 2025 by RML Architects, LLC



275 Market Street, Suite 213
 Minneapolis, MN 55405-1624
 612.429.0103
 www.rmlarchitects.com



Boelter
 CONSULTANTS
 307 5th Avenue
 Minneapolis, MN 55401

Consultants



Mandan, Hidatsa and Arikara Nation
 Three Affiliated Tribes of North Dakota
 307 5th Avenue
 New Town, ND 58763

Owner

Parshall Hotel and Laundromat
 205 MAIN STREET
 PARSHALL, ND 58770

Jurisdictional Approval

Certification

REBID DOCUMENTS

Project Phase

Revisions	
No.	Revision Description
12/01/2025	MODULAR PACKAGE
12/12/2025	MODULAR FABRICATION
01/06/2026	ISSUED FOR BID, BP2.0R
05/04/2026	ISSUED FOR REBID BP2.0R1
1	05/27/2026 BP2.0R1.ADD5.0

FIRST FLOOR FINISH PLAN

Project No.: 22.1010 SHEET NUMBER
 Date: 05/27/2026
 Drawn by: IE
 Checked by: CP
 Copyright © 2025 by RML Architects, LLC



1 FIRST FLOOR PLAN
 1/8" = 1'-0"

FINISH PLAN GENERAL NOTES

- ALL DEVICES SHALL BE WHITE UNLESS OTHERWISE SPECIFIED. ALL ELECTRICAL DATA WALL PLATES, SWITCHES, AND RECEPTACLES SHALL BE WHITE UNLESS OTHERWISE SPECIFIED.
- PROVIDE CHANGE IN FLOOR MATERIALS CENTERED UNDER DOORS IN THE CLOSED POSITION.
- DOOR AND CABINET HARDWARE FINISH: STAINLESS STEEL OR SATIN NICKEL AS SPECIFIED.
- ALL DIMENSIONS MUST BE FIELD VERIFIED.
- ALL PRODUCTS SHALL BE AS SPECIFIED. NO SUBSTITUTIONS WILL BE ALLOWED WITHOUT PRIOR WRITTEN APPROVAL OF THE ARCHITECT/DISEASER.
- SUBMIT SAMPLES OF ALL MATERIALS TO THE DESIGNER PRIOR TO INSTALLATION. SAMPLES MUST BE FROM THE SAME PRODUCTION RUN AS THOSE BEING USED ON THE PROJECT.
- DO NOT INSTALL MATERIAL FROM TWO DYE LOTS ADJACENT TO EACH OTHER OR IN THE SAME ROOM.
- SUBMIT ELECTRICAL PLANS TO THE INTERIOR DESIGNER TO REVIEW APPROVE LOCATIONS OF THERMOSTATS, STROBE LIGHTS, ETC. BEFORE INSTALLATION FOR COORDINATE WITH ARTWORK AND DESIGN FEATURES.
- PROVIDE THE FOLLOWING FLOOR AND WALL TRANSITION MATERIALS:
 - A) PORCELAIN TILE TO LVP/LVT (MM) SCHLUTER DILEX, SATIN ANODIZED
 - B) CARPET/LVP/LVT TO SEALED CONCRETE: VINYL REDUCER STRIP, COLOR: TARNETT BLACK B
 - C) CARPET/LVP/LVT (MM) TO PORCELAIN TILE: SCHLUTER SCHEINE, SATIN ANODIZED
 - D) CARPET TO LVP/LVT: VINYL REDUCER STRIP, COLOR: TARNETT BLACK B USED ONLY IN BACK OF HOUSE AREAS WHERE THE MATERIAL HEIGHTS VARY.

FLOOR FINISH LEGEND

CPT	
LVT	
TILE	
RUBBER	
VSF	

FINISH KEY

(*) NOTE: IF ASTERISK IS SHOWN, MAIN FIELD FINISH INDICATED. SEE PLANS AND ELEVATION FOR ACCENT FINISHES.

→ INDICATES THE INSTALLATION DIRECTION FOR FINISH MATERIAL.

OFFICE	ROOM NAME
118	ROOM NUMBER
CPT	FLOOR FINISH
MM	BASE FINISH CODE
PH	WALL FINISH CODE

PH INDICATES EXTEND OF WALL FINISH WHERE MULTIPLE FINISHES OCCUR.

KEY NOTES

- FLOOR PATTERN FOR MATERIAL REFERENCE ONLY. SEE MATERIAL LEGEND FOR INSTALL INFORMATION.
- TILE TRANSITIONS AS FOLLOWS:
 - A. COVE FOR TILE FLOOR TO TILE WALL, SCHLUTER DILEX, SATIN ANODIZED
 - B. EXPOSED TILE EDGES: SCHLUTER JOLLY V, SATIN ANODIZED
- SEE MATERIAL LEGEND FOR FLOOR MATERIAL. PERCENTS' FINAL FLOOR PATTERN TO BE CONFIRMED WITH FLOORING SUPPLIER DURING SUBMITTAL PROCESS.
- MEMPHISOME INSTALLATION PATTERN WITH 1/8" SINGLE FLANK STRAIGHT FRACED BORDER FOR LVT-1 IN LOBBY & DINING/COMMONITY, AND SERVERY. INSTALLER TO CONFIRM PATTERN WITH THE INTERIORS TEAM BEFORE INSTALLING.



275 Market Street, Suite 213
 Minneapolis, MN 55405-1624
 612.429.0103
 www.rmlarchitects.com



Boelter
 Headwaters Development
 2127 Northrup Avenue NE
 Shoreline, WA 98133

Boelter
 CONSULTANT DESIGN
 307 5th Avenue
 700 Northland Terrace N
 Minneapolis, MN 55403

Consultants



Mandan, Hidatsa and Arikara Nation
 Three Affiliated Tribes of North Dakota
 307 5th Avenue
 New Town, ND 58763

Owner

Parshall Hotel and Laundromat

205 MAIN STREET
 PARSHALL, ND 58770

Jurisdictional Approval

Certification

REBID DOCUMENTS

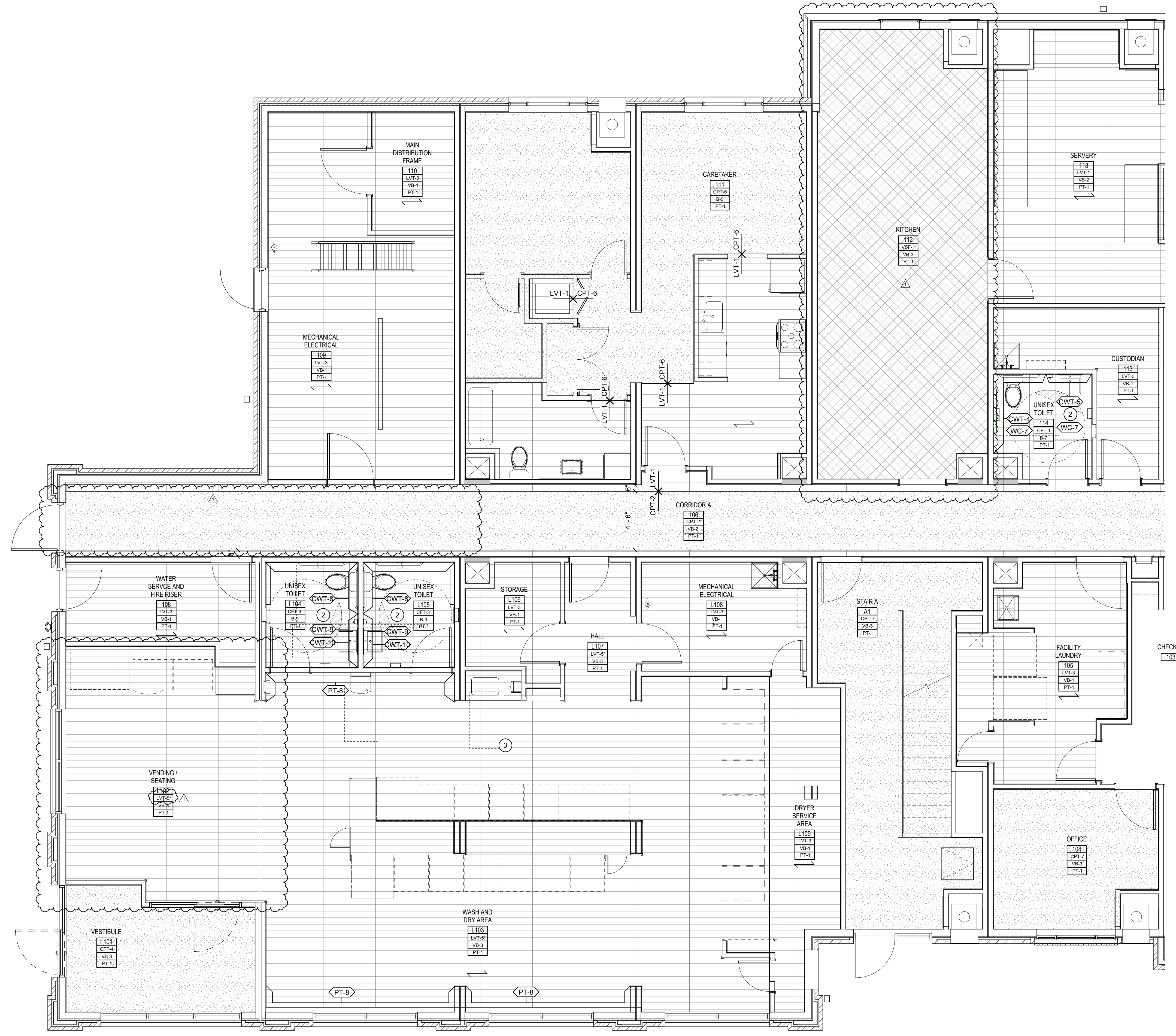
Project Phase

Revisions		
No.	Date	Revision Description
	12/01/2025	MODULAR PACKAGE
	12/12/2025	MODULAR FABRICATION
	01/06/2026	ISSUED FOR BID, BP2.0R
	05/04/2026	ISSUED FOR REBID BP2.0R1
1	05/27/2026	BP2.0R1.ADD5.0

ENLARGED FIRST FLOOR PLAN

Project No.: 22.1010 SHEET NUMBER
 Date: 05/27/2026
 Drawn by: IE 1601
 Checked by: CP

Copyright © 2025 by RML Architects, LLC



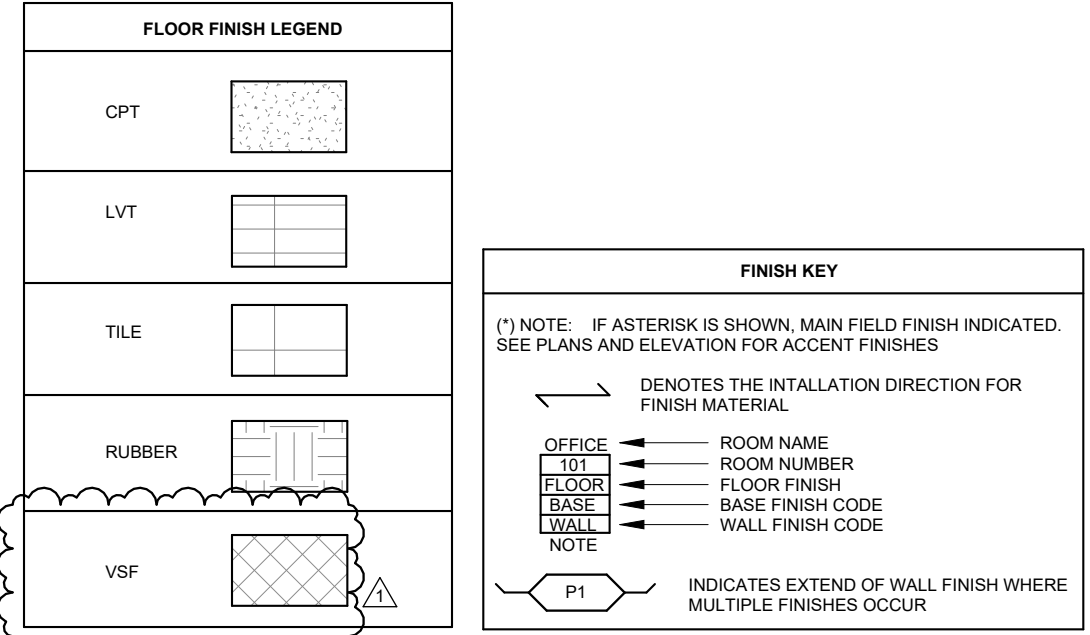
1 ENLARGED FIRST FLOOR PLAN AREA A
 1/4" = 1'-0"

FINISH PLAN GENERAL NOTES

- ALL DEVICES SHALL BE WHITE UNLESS OTHERWISE SPECIFIED. ALL ELECTRICAL DATA WALL PLATES, SWITCHES, AND RECEPTS SHALL BE WHITE UNLESS OTHERWISE SPECIFIED.
- PROVIDE CHANGE IN FLOOR MATERIALS CENTERED UNDER DOORS IN THE CLOSED POSITION.
- DOOR AND CABINET HARDWARE FINISH: STAINLESS STEEL OR SATIN NICKEL AS SPECIFIED.
- ALL DIMENSIONS MUST BE FIELD VERIFIED.
- ALL PRODUCTS SHALL BE AS SPECIFIED. NO SUBSTITUTIONS WILL BE ALLOWED WITHOUT PRIOR WRITTEN APPROVAL OF THE ARCHITECT/DESIGNER.
- SUBMIT SAMPLES OF ALL MATERIALS TO THE DESIGNER PRIOR TO INSTALLATION. SAMPLES MUST BE FROM THE SAME PRODUCTION RUN AS THOSE BEING USED ON THE PROJECT.
- DO NOT INSTALL MATERIAL FROM TWO DYE LOTS ADJACENT TO EACH OTHER OR IN THE SAME ROOM.
- SUBMIT ELECTRICAL PLANS TO THE INTERIOR DESIGNER TO REVIEW APPROVE LOCATIONS OF THERMOSTATS, STROBE LIGHTS, ETC., BEFORE INSTALLATION FOR COORDINATE WITH ARTWORK AND DESIGN FEATURES.
- PROVIDE THE FOLLOWING FLOOR AND WALL TRANSITION MATERIALS:
 - PORCELAIN TILE TO LVP/LVT (DMM); SCHLUTER RENDI-BL; SATIN ANODIZED
 - CARPET LVP/LVT TO SEALED CONCRETE; VINYL REDUCER STRIP, COLOR: TARKETT BLACK B
 - CARPET LVP/LVT (DMM) TO PORCELAIN TILE; SCHLUTER SCHEME, SATIN ANODIZED
 - CARPET TO LVP/LVT; VINYL REDUCER STRIP, COLOR: TARKETT BLACK B USED ONLY IN BACK OF HOUSE AREAS WHERE THE MATERIAL HEIGHTS VARY.

KEY NOTES

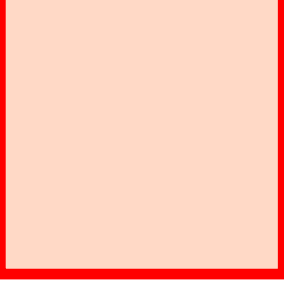
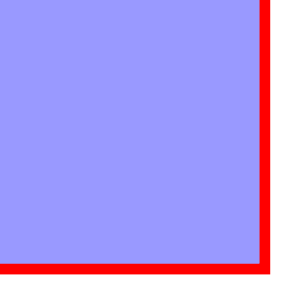
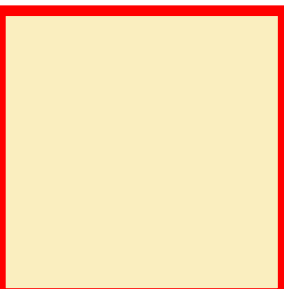

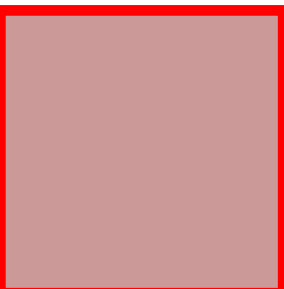


- FLOOR PATTERN FOR MATERIAL REFERENCE ONLY. SEE MATERIAL LEGEND FOR INSTALL INFORMATION.
- TILE TRANSITIONS AS FOLLOWS:
 A. COVER FOR TILE FLOOR TO TILE WALL; SCHLUTER DILEX; SATIN ANODIZED
 B. EXPOSED TILE EDGES/SCHLUTER DILEX; SATIN ANODIZED
- SEE MATERIAL LEGEND FOR FLOOR MATERIAL PERCENTS. FINAL FLOOR PATTERN TO BE CONFIRMED WITH FLOORING SUPPLIER DURING SUBMITTAL PROCESS.
- HERINGBONE INSTALLATION PATTERN WITH 7" SINGLE PLANK STRAIGHT STACKED CORNER OR LVT-1 IN LOBBY KITCHEN/CORRIDOR AND SERVERY. INSTALLER TO CONFIRM PATTERN WITH THE INTERIORS TEAM BEFORE INSTALLING.

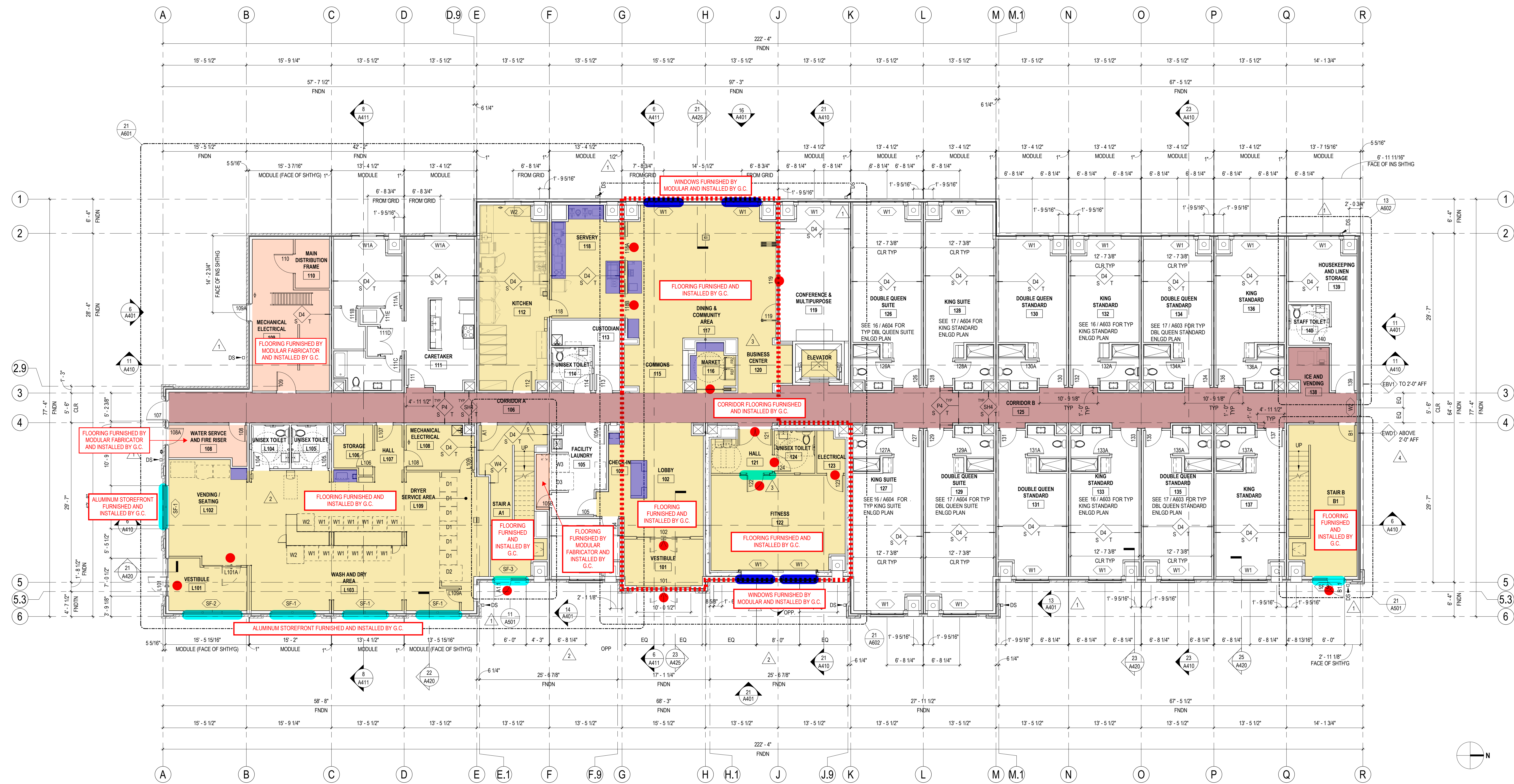


5/27/2026 11:01:56 AM

CLARIFICATION OF WORK SCOPE FOR FLOOR FINISHES, DOORS, WINDOWS AND MILLWORK

(ISSUED AS PART OF BP2.0R1, ADD5.0 05/27/2026)

	FLOORING FURNISHED BY MODULAR FABRICATOR AND INSTALLED BY G.C.		MILLWORK BY G.C.
	FLOORING FURNISHED AND INSTALLED BY G.C.		WINDOWS FURNISHED BY MODULAR FABRICATOR AND INSTALLED BY G.C.
	CORRIDOR FLOORING FURNISHED AND INSTALLED BY G.C.		STOREFRONT FURNISHED AND INSTALLED BY G.C.
			DOORS, HARDWARE AND FRAME FURNISHED AND INSTALLED BY G.C.



275 Market Street, Suite 313
 Minneapolis, MN 55405-1624
 612.429.0103
 www.rml-architects.com

Consultants



Boelter
 Professional Design, Construction & Survey
 307 5th Avenue
 New Town, ND 58763

Owner

Parshall Hotel and Laundromat
 205 Main Street
 Parshall, ND 58770

Jurisdictional Approval

Certification

REBID DOCUMENTS

Project Phase		
No.	Date	Revisions
		Revisions Description
09/18/2025		Bid Package 2.0
10/01/2025		Design Development
11/06/2025		50% Construction Documents
12/01/2025		Modular Package
12/12/2025		Modular Fabrication
01/06/2026		Issued for Bid, BP2.0R
1	01/23/2026	BP2.0R, ADD2.0
2	02/06/2026	BP2.0R, ADD4.0
3	03/03/2026	Rd. 2 Plan Check Comments
4	03/30/2026	Rd. 3 Plan Check Comments
5	04/30/2026	Rd. 4 Plan Check Comments
	05/04/2026	Issued for Re-Bid BP2.0R1

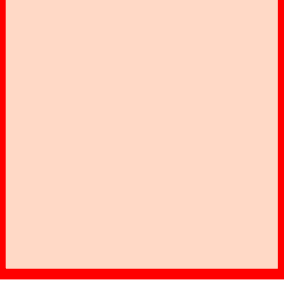
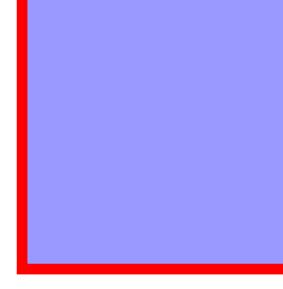
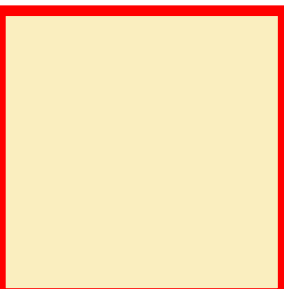

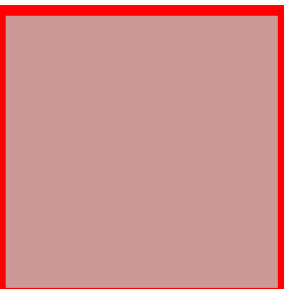


FIRST FLOOR OVERALL PLAN

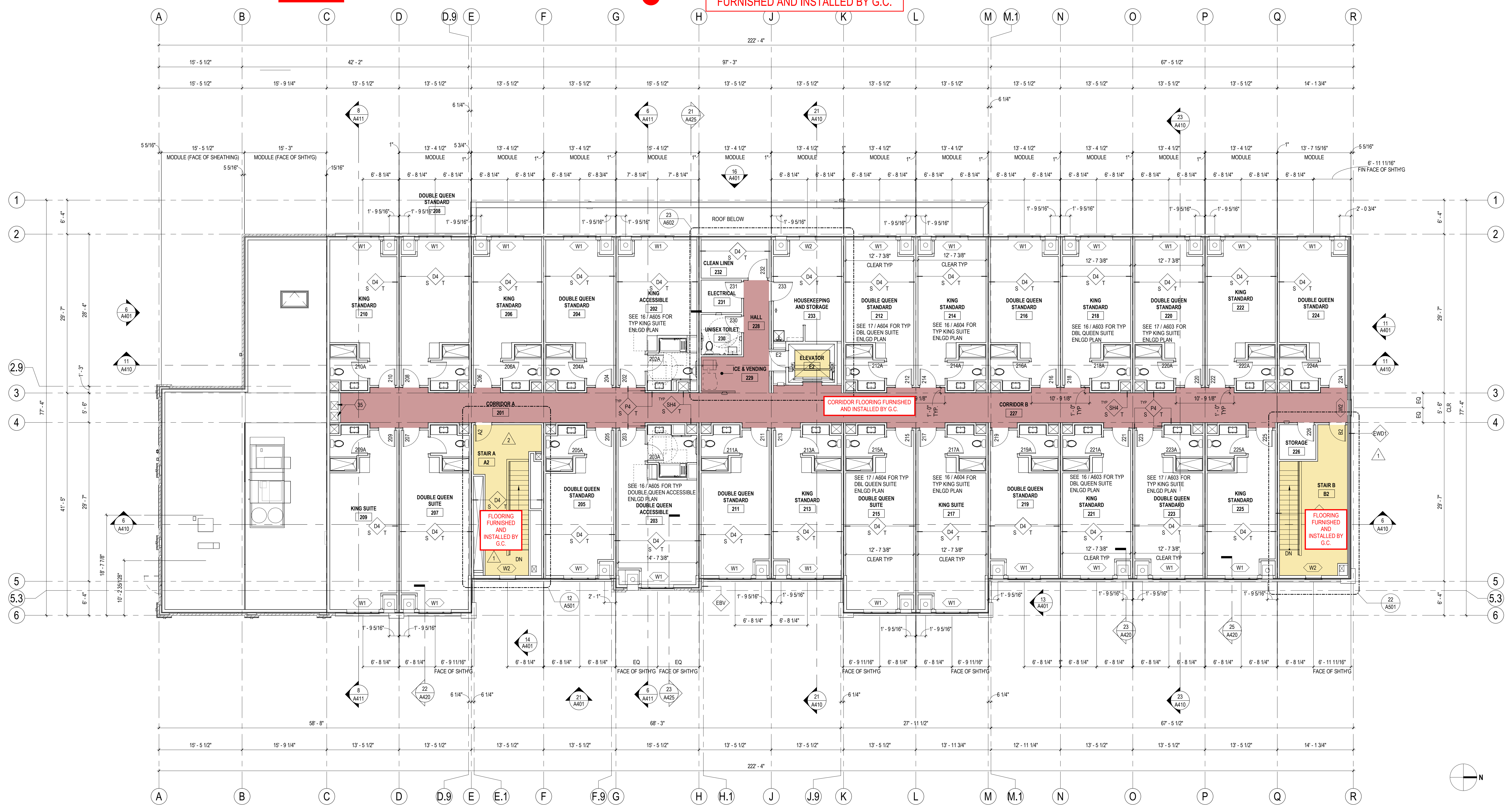
Project No.: 22.1010 SHEET NUMBER
 Date: 05/04/2026
 Drawn by: DS, JPH
 Checked by: RML
A201
 Copyright © 2025 by RML Architects, LLC

5/27/2026 9:06:49 AM

CLARIFICATION OF WORK SCOPE FOR FLOOR FINISHES, DOORS, WINDOWS AND MILLWORK

(ISSUED AS PART OF BP2.0R1, ADD5.0 05/27/2026)

	FLOORING FURNISHED BY MODULAR FABRICATOR AND INSTALLED BY G.C.		MILLWORK BY G.C.
	FLOORING FURNISHED AND INSTALLED BY G.C.		WINDOWS FURNISHED BY MODULAR FABRICATOR AND INSTALLED BY G.C.
	CORRIDOR FLOORING FURNISHED AND INSTALLED BY G.C.		STOREFRONT FURNISHED AND INSTALLED BY G.C.
			DOORS, HARDWARE AND FRAME FURNISHED AND INSTALLED BY G.C.



275 Market Street, Suite 313
 Minneapolis, MN 55405-1624
 612.429.0103
 www.rml-architects.com

Consultants



Boelter
 Professional Design,
 Construction & Surveying
 307 5th Avenue
 New Town, ND 58763

Owner



Mandan, Hidatsa and Arikara Nation
 Three Affiliated Tribes of North Dakota
 307 5th Avenue
 New Town, ND 58763

Parshall Hotel and Laundromat

205 Main Street
 Parshall, ND 58770

Jurisdictional Approval

Certification

REBID DOCUMENTS

Project Phase		
No.	Date	Revisions
09/18/2025		Bid Package 2.0
10/01/2025		Design Development
11/06/2025		50% Construction Documents
12/01/2025		Modular Package
12/12/2025		Modular Fabrication
01/06/2026		Issued for Bid, BP2.0R
1	03/30/2026	Rd. 3 Plan Check Comments
2	04/30/2026	Rd. 4 Plan Check Comments
	05/04/2026	Issued for Re-Bid BP2.0R1

SECOND FLOOR OVERALL PLAN

Project No.: 22.1010 SHEET NUMBER
 Date: 05/04/2026
 Drawn by: DS, JPH
 Checked by: RML
A202
 Copyright © 2025 by RML Architects, LLC

5/27/2026 9:06:56 AM