

SECTION 00 9113.1 - ADDENDUM 1

1.1 PROJECT INFORMATION

- A. Project Name: **16 Main St. S Façade Improvement**
- B. Owner: **Albertson Rentals 21, LLC**
- C. Architect: **Ackerman-Estvold, Engineering & Management Consulting, Inc.**
- D. Architect Project Number: **R26075**
- E. Date of Addendum: **5/15/26**

1.2 NOTICE TO BIDDERS

- A. This Addendum is issued pursuant to the Instructions to Bidders and Conditions of the Contract. This Addendum serves to clarify, revise, and supersede information in the Project Manual, Drawings, and previously issued Addenda. Portions of the Addendum affecting the Contract Documents will be incorporated into the Contract by enumeration of the Addendum in the Owner/Contractor Agreement.
- B. The Bidder shall acknowledge receipt of this Addendum in the appropriate space on the Bid Form.
- C. The date for receipt of bids is unchanged by this Addendum, at same time and location.

1.3 ATTACHMENTS

- A. This Addendum includes the following attached Documents and Specification Sections:
 - 1. Section 04 7200 – Cast Stone Masonry, (new).
 - 2. Section 06 1600 – Sheathing, (new).
- B. This Addendum includes the following attached Sheets:
 - 1. Architectural Sheet A200 – Floor Plan, Elevation, & Wall Section dated, (reissued).

1.4 REVISIONS TO DIVISION 00 PROCUREMENT REQUIREMENTS AND CONTRACTING REQUIREMENTS

- A. Document 00 0110 – Table of Contents (not reissued).
 - 1. Division 01 – General Requirements: Remove 01 4200 - References

END OF DOCUMENT 00 9113.1

SECTION 04 7200 - CAST STONE MASONRY

PART 1 - GENERAL

1.1 RELATED DOCUMENTS

- A. Drawings and general provisions of the Contract, including General and Supplementary Conditions and Division 01 Specification Sections, apply to this Section.

1.2 SUMMARY

- A. Section Includes:
 - 1. Decorative elements.

1.3 ACTION SUBMITTALS

- A. Product Data: For each type of product.
- B. Shop Drawings: Show fabrication and installation details for cast stone units. Include dimensions, details of reinforcement and anchorages if any, and indication of finished faces.
- C. Samples:
 - 1. For each color and texture of cast stone required, 4 inches square in size.
 - 2. For colored mortar.

1.4 INFORMATIONAL SUBMITTALS

- A. Material test reports.

1.5 QUALITY ASSURANCE

- A. Manufacturer Qualifications: A qualified manufacturer of cast stone units similar to those indicated for this Project, that has sufficient production capacity to manufacture required units, and is a plant certified by CSI or APA.

PART 2 - PRODUCTS

2.1 CAST STONE UNITS

- A. Provide products from one of the following Manufacturers:
 - 1. Midwest Cast Stone
 - 2. Venetian Cast Stone
- B. Cast Stone Units: Comply with ASTM C1364.
 - 1. Decorative elements including items as indicated on Drawings.
- C. Fabricate units with sharp arris and accurately reproduced details, with indicated texture on all exposed surfaces unless otherwise indicated.
 - 1. Slope exposed horizontal surfaces 1:12 to drain unless otherwise indicated.
 - 2. Provide raised fillets at backs of sills and at ends indicated to be built into jambs.
 - 3. Provide drips on projecting elements unless otherwise indicated.
- D. Cure Units as Follows:
 - 1. Cure units in enclosed, moist curing room at 95 percent relative humidity and temperature of 100 deg F for 12 hours or 70 deg F for 16 hours.
 - 2. Keep units damp and continue curing to comply with one of the following:
 - a. No fewer than five days at mean daily temperature of 70 deg F or above.
 - b. No fewer than seven days at mean daily temperature of 50 deg F or above.
- E. Acid etch units after curing to remove cement film from surfaces to be exposed to view.
- F. Colors and Textures: As selected by Architect from manufacturer's full range.

2.2 ACCESSORIES

- A. Anchors: Type and size indicated, fabricated from Type 304 stainless steel complying with ASTM A240/A240M, ASTM A276/A276M, or ASTM A666.
- B. Dowels: 1/2-inch-diameter round bars, fabricated from Type 304 stainless steel complying with ASTM A240/A240M, ASTM A276/A276M, or ASTM A666.
- C. Proprietary Acidic Cleaner: Manufacturer's standard-strength cleaner designed for removing mortar/grout stains, efflorescence, and other new construction stains from new masonry without discoloring or damaging masonry surfaces. Use product expressly approved for intended use by cast stone manufacturer and expressly approved by cleaner manufacturer for use on cast stone and adjacent masonry materials.
 - 1. [<Double click here to find, evaluate, and insert list of manufacturers and products.>](#)

2.3 MORTAR MIXES

- A. Comply with requirements in Section 04 2000 "Unit Masonry" for mortar mixes.
- B. Preblended dry mortar mix complying with ASTM C1714/C1714M and capable of producing mortar strength as indicated in ASTM C270.
 - 1. For setting mortar, use Type N.
 - 2. For pointing mortar, use Type N.
- C. Pigmented Mortar: Use colored cement product.

PART 3 - EXECUTION

3.1 SETTING CAST STONE IN MORTAR

- A. Set cast stone as indicated in TMS 604.
- B. Set cast stone as indicated on Drawings. Set units accurately in locations indicated, with edges and faces aligned according to established relationships and indicated tolerances.
- C. Set units in full bed of mortar with full head joints unless otherwise indicated.
 - 1. Fill dowel holes and anchor slots with mortar.
 - 2. Build concealed flashing into mortar joints as units are set.
 - 3. Keep head joints in copings and between other units with exposed horizontal surfaces open to receive sealant.
 - 4. Keep joints at shelf angles open to receive sealant.
- D. Rake out joints for pointing with mortar to depths of not less than 3/4 inch. Rake joints to uniform depths with square bottoms and clean sides. Scrub faces of units to remove excess mortar as joints are raked.
- E. Point mortar joints by placing and compacting mortar in layers not greater than 3/8 inch. Compact each layer thoroughly and allow it to become thumbprint hard before applying next layer.
- F. Tool exposed joints slightly concave when thumbprint hard. Use a smooth plastic jointer larger than joint thickness.

3.2 SETTING ANCHORED CAST STONE WITH SEALANT-FILLED JOINTS

- A. Set cast stone as indicated in TMS 604.

3.3 INSTALLATION TOLERANCES

- A. Variation from Plumb: Do not exceed 1/8 inch in 10 ft., or 1/2 inch maximum.
- B. Variation from Level: Do not exceed 1/8 inch in 10 ft., or 1/2 inch maximum.
- C. Variation in Joint Width: Do not vary joint thickness more than 1/8 inch in 36 inches or one-fourth of nominal joint width, whichever is less.
- D. Variation in Plane between Adjacent Surfaces (Lipping): Do not vary from flush alignment with adjacent units or adjacent surfaces indicated to be flush with units by more than 1/16 inch, except where variation is due to warpage of units within tolerances specified.

3.4 ADJUSTING AND CLEANING

- A. Remove and replace stained and otherwise damaged units and units not matching approved Samples. Cast stone may be repaired if methods and results are approved by Architect.
- B. Replace units in a manner that results in cast stone matching approved Samples, complying with other requirements, and showing no evidence of replacement.
- C. In-Progress Cleaning: Clean cast stone as work progresses.
 - 1. Remove mortar fins and smears before tooling joints.
 - 2. Remove excess sealant immediately, including spills, smears, and spatter.
- D. Final Cleaning: After mortar is thoroughly set and cured, clean exposed cast stone as follows:
 - 1. Remove large mortar particles by hand with wooden paddles and nonmetallic scrape hoes or chisels.
 - 2. Test cleaning methods on sample; leave one sample uncleaned for comparison purposes. Obtain Architect's approval of sample cleaning before proceeding with cleaning of cast stone.
 - 3. Protect adjacent surfaces from contact with cleaner by covering them with liquid strippable masking agent or polyethylene film and waterproof masking tape.
 - 4. Wet surfaces with water before applying cleaners; remove cleaners promptly by rinsing thoroughly with clear water.
 - 5. Clean cast stone with proprietary acidic cleaner applied according to manufacturer's written instructions.

END OF SECTION 04 7200

SECTION 06 1600 - SHEATHING

PART 1 - GENERAL

1.1 SUMMARY

- A. Section Includes:
 - 1. Wall sheathing.
 - 2. Fasteners.
 - 3. Miscellaneous Materials.

1.2 ACTION SUBMITTALS

- A. Product Data: For each type of process and factory-fabricated product.

PART 2 - PRODUCTS

2.1 WALL SHEATHING

- A. Plywood Sheathing, Walls: Either DOC PS 1 or DOC PS 2, Exterior sheathing.
- B. Oriented-Strand-Board Sheathing, Walls: DOC PS 2, Exposure 1 sheathing.

2.2 FASTENERS

- A. General: Provide fasteners of size and type indicated that comply with requirements specified in this article for material and manufacture.
 - 1. For wall sheathing, provide fasteners with hot-dip zinc coating complying with ASTM A153/A153M.

2.3 MISCELLANEOUS MATERIALS

- A. Adhesives for Field Gluing Panels to Wood Framing: Formulation complying with ASTM D3498 that is approved for use with type of construction panel indicated by manufacturers of both adhesives and panels.

PART 3 - EXECUTION

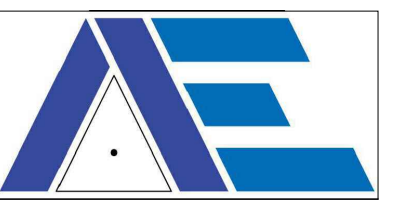
3.1 INSTALLATION, GENERAL

- A. Do not use materials with defects that impair quality of sheathing or pieces that are too small to use with minimum number of joints or optimum joint arrangement. Arrange joints so that pieces do not span between fewer than three support members.
- B. Cut panels at penetrations, edges, and other obstructions of work; fit tightly against abutting construction unless otherwise indicated.
- C. Securely attach to substrate by fastening as indicated, complying with the following:
 - 1. Table 2304.10.1, "Fastening Schedule," in the ICC's International Building Code.
 - 2. Table R602.3(1), "Fastener Schedule for Structural Members," and Table R602.3(2), "Alternate Attachments," in the ICC's International Residential Code for One- and Two-Family Dwellings.
 - 3. ICC-ES evaluation report for fastener.
- D. Coordinate wall sheathing installation with flashing and joint-sealant installation so these materials are installed in sequence and manner that prevent exterior moisture from passing through completed assembly.
- E. Do not bridge building expansion joints; cut and space edges of panels to match spacing of structural support elements.

3.2 WOOD STRUCTURAL PANEL INSTALLATION

- A. General: Comply with applicable recommendations in APA Form No. E30, "Engineered Wood Construction Guide," for types of structural-use panels and applications indicated.
- B. Fastening Methods: Fasten panels as indicated below:
 - 1. Wall and Roof Sheathing:
 - a. Nail or staple to wood framing.
 - b. Screw to cold-formed metal framing.
 - c. Space panels 1/8 inch apart at edges and ends.

END OF SECTION 06 1600



ACKERMAN-ESTVOLD
MINOT | WILLISTON | FARGO | SOSE
www.ackerman-estvold.com

©2024 by Ackerman-Estvold. These drawings, including all design, details, specifications, and information, are the sole copyright of Ackerman-Estvold and are for use on this specific project only. These drawings shall not be used on any other work without written consent and agreement of Ackerman-Estvold.

NOT FOR CONSTRUCTION

16 MAIN ST. S FACADE IMPROVEMENT

ALBERTSON RENTALS, LLC
16 S. MAIN STREET
MINOT, ND 58701

DATE
5/07/26

CONSTRUCTION DOCUMENTS

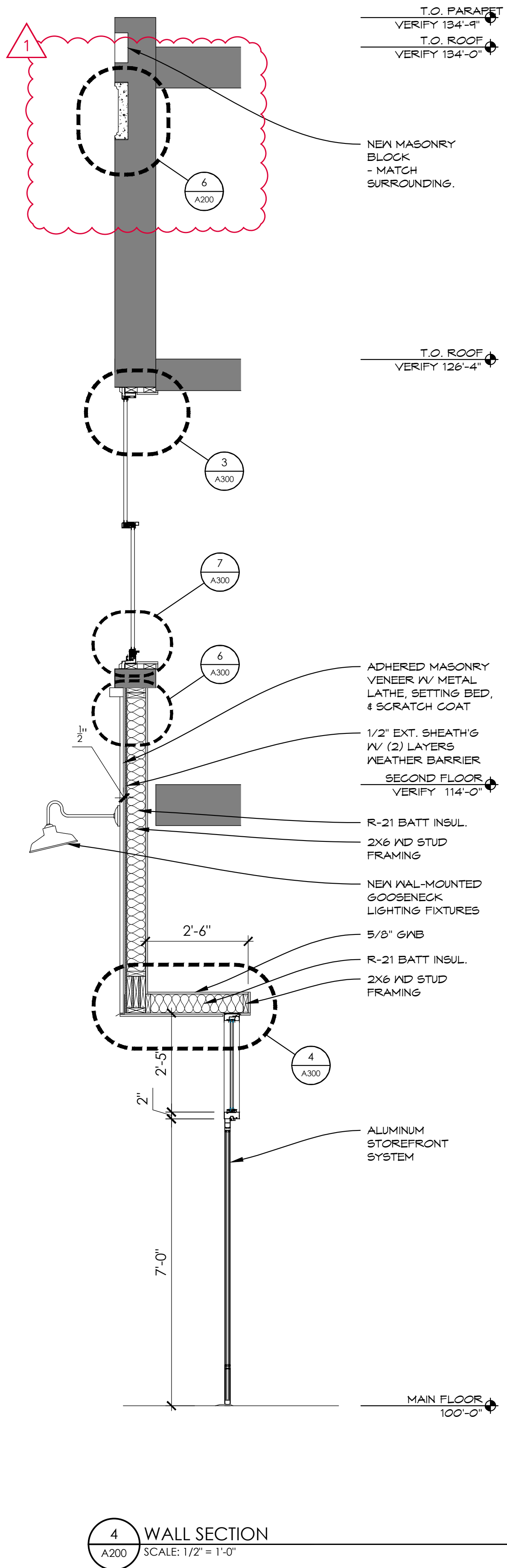
REVISION SCHEDULE

#	DATE	REVISION
1	5/15/26	ADDM 1

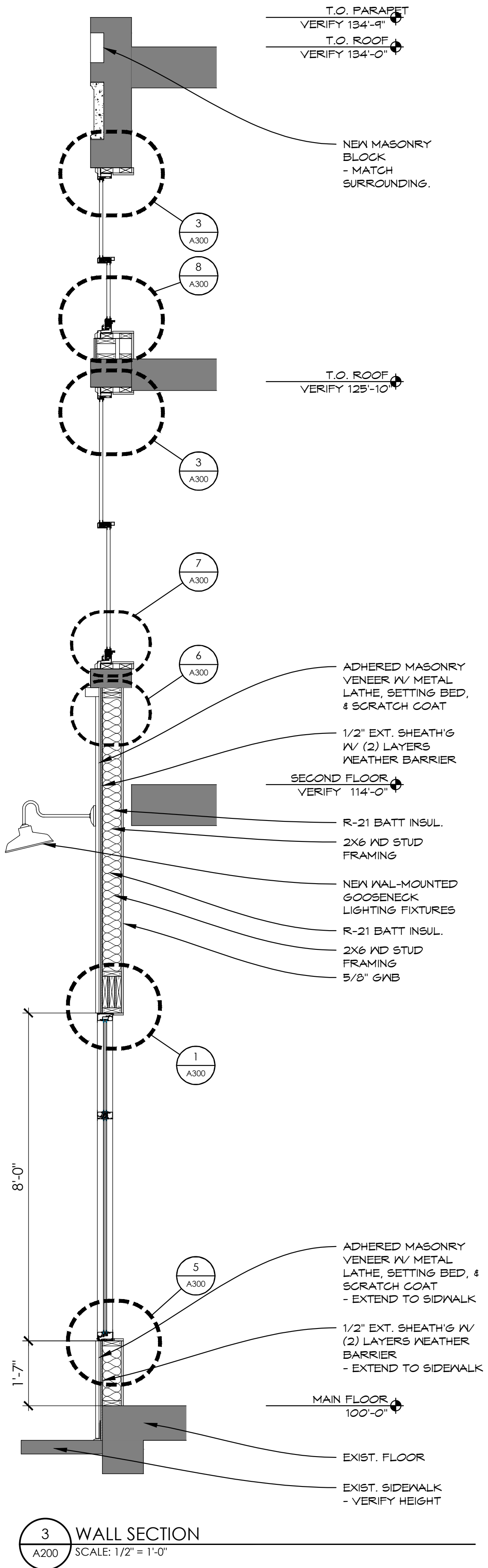
PROJECT NO. **24074**
DRAWN BY: **MGM**
CHECKED BY: **RMA**

SHEET

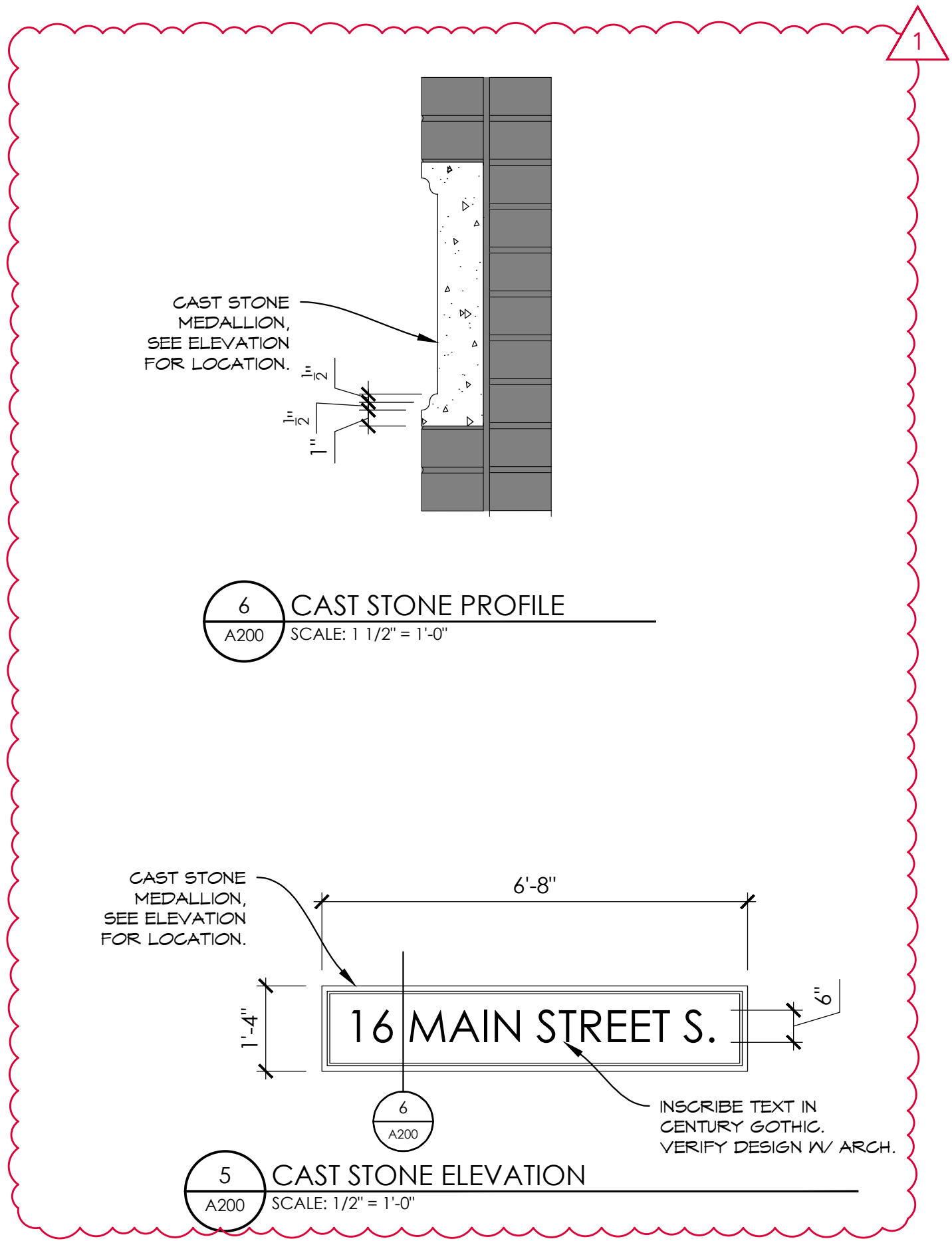
A200
FLOOR PLAN,
ELEVATION, & WALL
SECTION



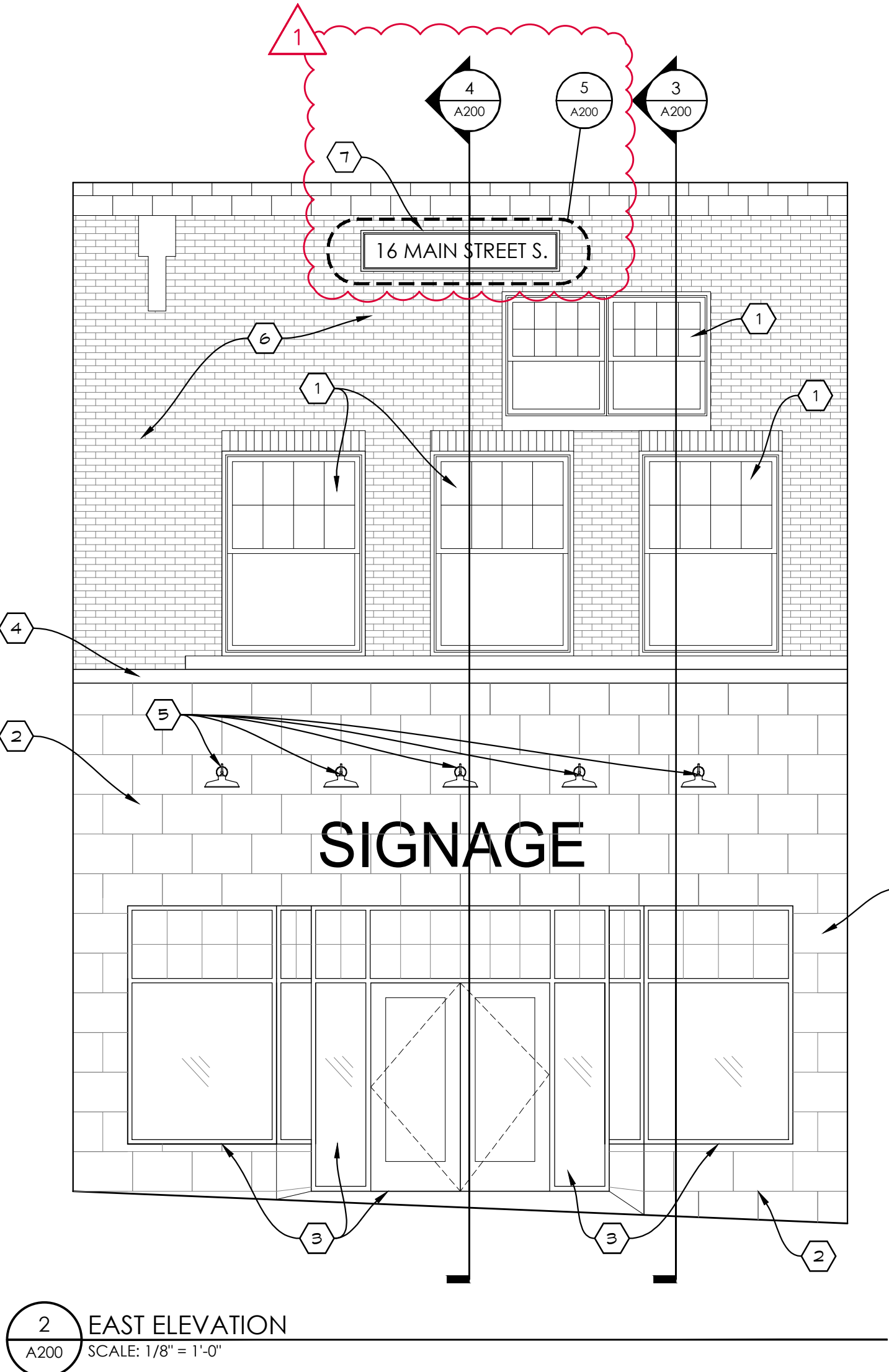
4 WALL SECTION
A200 SCALE: 1/2" = 1'-0"



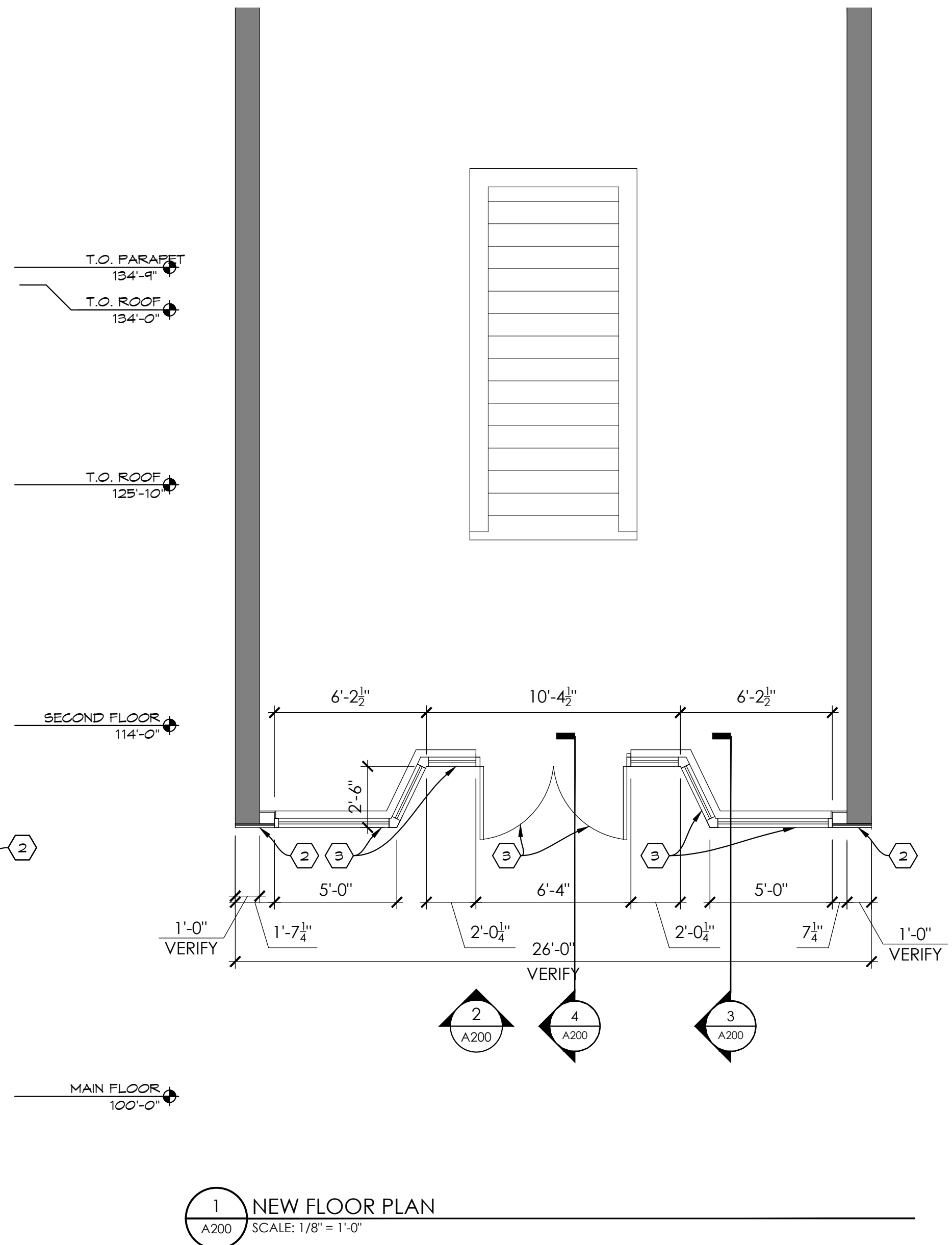
3 WALL SECTION
A200 SCALE: 1/2" = 1'-0"



5 CAST STONE ELEVATION
A200 SCALE: 1/2" = 1'-0"



2 EAST ELEVATION
A200 SCALE: 1/8" = 1'-0"



1 NEW FLOOR PLAN
A200 SCALE: 1/8" = 1'-0"

- NEW CONSTRUCTION KEY NOTES (#)**
- 1 INSTALL NEW ALUMINUM SINGLE-HUNG WINDOWS.
 - 2 NEW ADHERED MASONRY VENEER.
 - 3 NEW ALUMINUM STOREFRONT WINDOWS & DOORS.
 - 4 NEW CAST STONE SILL. SEE DETAIL 6/A300
 - 5 INSTALL NEW WALL MOUNTED GOOSENECK LIGHT. PROVIDE POWER VIA EXIST. LIGHTING
 - 6 **CLEAR/REPAIR EXISTING MASONRY TOUCH POINT AND REPAIR AS REQUIRED.**
 - 7 NEW ENGRAVED CAST STONE MEDALLION