



Addendum		Addendum No.:	BP2.0R1, ADD 8.0
		RML Project No.:	22.1010
Date of Addendum:	05/31/2026		
Project Name:	Parshall Hotel and Laundromat Parshall, ND		
Owner Name:	Three Affiliated Tribes of North Dakota MHA Nation 307 5 th Avenue, New Town, ND 58763		
<p>This Addendum forms part of the Contract Documents and modifies the Bid Package 2.0R1 "Bid Documents Issued for Rebid" dated 05/04/2026. Additions, omissions, clarifications, and corrections to the Contract Documents contained herein shall be included in the Work. Reference made to the Project Manual and Drawings shall be used as a guide only. Bidders shall determine the Work affected by the Addendum items described. Acknowledgement of receipt of this Addendum is required in the space provided on the Bid Form.</p>			

CHANGES TO THE PROJECT MANUAL

A. Section 09 3013 Ceramic Tiling (reissued)

- 1. Part 2.4 Grout Materials
 - a. Paragraph C
 - 1) Delete Water Cleanable Epoxy Grout.

CHANGES TO THE ARCHITECTURAL DRAWINGS

A. Sheet A630 Interior Details (reissued)

- 1. Drawing 18 Detail at Demising Wall and Floor-Ceiling Assembly
 - a. Revise detail to show Simpson screw at modular wall base plate, 1" plywood blocking and factory-installed vinyl wall base.
 - b. Add notes:
 - 1) "Simpson screws at second floor modules by G.C. Drive through gyp board and into base plates. See Structural Drawings."
 - 2) "G.C. to remove vinyl base and reinstall after screws are driven at second floor modules"
 - 3) "Continuous 1" plywood blocking by G.C."



Page 2
Parshall Hotel and Laundromat
Bid Package 2.0R1 Rebid, Addendum 8.0
05/31/2026

**End of Narrative for
Addendum No. BP2.0R1, ADD8.0**

SECTION 09 3013 - CERAMIC TILING

PART 1 - GENERAL

1.1 RELATED DOCUMENTS

- A. The Drawings, the provisions of the Contract including General Conditions, Supplementary Conditions, Special Conditions, and the Division 01 General Requirements apply to the Work of this Section.

1.2 SUMMARY

- A. Section Includes:
 - 1. Ceramic floor tile and wall tile.
 - 2. Waterproof and crack isolation membranes.
 - 3. Setting materials.
 - 4. Grout materials.
 - 5. Adhesive materials.
 - 6. Trim and accessories.
- B. Related Requirements:
 - 1. Section 07 9200 "Joint Sealants" for sealing of expansion, contraction, control, and isolation joints in tile surfaces.
 - 2. Section 09 2900 "Gypsum Board" for cementitious backer units.

1.3 REFERENCES

- A. TCNA Handbook for Ceramic, Glass, and Stone Tile Installation, 2023
- B. ANSI A137.1-2022, American National Standard Specifications for Ceramic Tile
- C. ANSI A108 Series/A118 Series/A136.1 - American National Standard Specifications for the Installation of Ceramic Tile (Compendium)

1.4 ACTION SUBMITTALS

- A. Submit the following in accordance with Section 01 3300 "Submittal Procedures".
 - 1. Product Data: Provide manufacturers' data sheets on tile, mortar, grout, and accessories. Include instructions for using grouts and adhesives..
 - 2. Shop Drawings: Show locations of each type of tile and tile pattern, color arrangements, perimeter conditions and junctions with dissimilar materials. Show widths, details, and locations of expansion, contraction, control, and isolation joints in tile substrates and finished tile surfaces. Indicate tile layout, patterns, color arrangement, perimeter conditions, junctions with dissimilar materials, control and expansion joints, thresholds, ceramic accessories, and setting details.
 - 3. Samples:

- a. Full-size units of each type and composition of tile and for each color and finish required.
- b. Grout samples
- c. Full-size units of each type of trim and accessory.
- d. Stone thresholds in 6-inch lengths.
- e. Metal edge strips in 6-inch lengths.

1.5 MAINTENANCE MATERIAL SUBMITTALS

- A. Furnish extra materials that match and are from same production runs as products installed and that are packaged with protective covering for storage and identified with labels describing contents.
 1. Tile and Trim Units: Furnish quantity of full-size units equal to 3 percent of amount installed for each type, composition, color, pattern, and size indicated.
 2. Grout: Furnish quantity of grout equal to 3 percent of amount installed for each type, composition, and color indicated.
 3. Deliver to Owner at time of final inspection for work under this Section and store where directed in the building.

1.6 QUALITY ASSURANCE

- A. Maintain one copy of TCA Handbook and ANSI A108 Series/A118 Series on site.
- B. Manufacturer Qualifications: Company specializing in manufacturing the types of products specified in this section, with minimum 5 years of documented experience.
- C. Installer Qualifications: Company specializing in performing tile installation which has at least 5 years' of documented experience in tile installation similar to the requirements of this Project.
- D. Single Source Materials: Provide setting, grouting, waterproofing, crack isolation underlayment materials from a single manufacturer unless otherwise approved and acceptable to the manufacturer to ensure total tile setting system responsibility.

1.7 DELIVERY, STORAGE, AND HANDLING

- A. Deliver and store packaged materials in original containers with seals unbroken and labels intact until time of use. Comply with requirements in ANSI A137.1 for labeling tile packages.
- B. Store tile and cementitious materials on elevated platforms, under cover, and in a dry location.
- C. Store aggregates where grading and other required characteristics can be maintained and contamination can be avoided.
- D. Store liquid materials in unopened containers and protected from freezing.

1.8 FIELD CONDITIONS

- A. Environmental Limitations: Do not install tile until construction in spaces is complete and ambient temperature and humidity conditions are maintained at the levels indicated in referenced standards and manufacturer's written instructions.
- B. Do not install adhesives in an unventilated environment.
- C. Maintain ambient and substrate temperature of 50 degrees F during installation of mortar materials unless otherwise specified by material manufacturer.

PART 2 - PRODUCTS

2.1 TILE PRODUCTS

- A. Ceramic Floor Tile (CFT-__): Refer to "Interior Materials Schedule" on Interior Drawings for manufacturers, styles, sizes, colors, and layout patterns.
- B. Ceramic Wall Tile (CWT-__): Refer to "Interior Materials Schedule" on Interior Drawings for manufacturers, styles, sizes, colors, and layout patterns.
- C. Ceramic Trim Units: Refer to "Interior Materials Schedule" on Interior Drawings for manufacturers, styles, sizes, colors, and layout patterns.

2.2 WATERPROOF AND CRACK ISOLATION MEMBRANES

- A. General: Manufacturer's standard product that complies with ANSI A118.10 and is recommended by the manufacturer for the application indicated. Include reinforcement and accessories recommended by manufacturer.
- B. Waterproof Membrane, Fluid-Applied: Thin-set, self-bonding and load-bearing liquid-latex rubber or elastomeric polymer that produces a flexible, seamless membrane with anti-microbial protection to inhibit the growth of mold and mildew.
 - 1. Provide manufacturer's recommended reinforcing mesh.
 - 2. Thickness: Recommended by manufacturer, but not less than 40 mil (minimum) DFT.
 - 3. Provide manufacturer's primer applied to gypsum underlayment, if required.
 - 4. One of the following:
 - a. "Hydroment Ultra-Set Advanced", (Bostik)
 - b. "Trowel & Seal Waterproofing and Anti Fracture Membrane", (Custom)
 - c. "Laticrete 9235 Waterproof Membrane", (Laticrete)
 - d. "PRP M19", (Mapei)
 - e. Triple Flex Waterproofing (TEC)

2.3 SETTING MATERIALS

- A. Manufacturers: Subject to compliance with requirements, available manufacturers offering products that may be incorporated into the Work include:

1. Bonsal American, Inc.
 2. Bostik, Inc.
 3. Custom Building Products.
 4. Laticrete International.
 5. Mapei Corporation.
 6. TEC Specialty Products, LLC
 7. Approved Substitutions: Refer to Document 00 2600 "Procurement Substitution Procedures".
- B. Standard Dry-Set Mortar (Thinset): ANSI A118.1.
- C. Modified Dry-Set Mortar (Thinset): Latex-Modified Dry-Set Portland Cement Mortar for Porcelain Ceramic Floor and Wall Tiles, and Glass Mosaic Wall Tiles, complying with ANSI A118.4.
1. Thinset mortar for tiles smaller than 15 inches on all sides.
- D. Improved Modified Dry-Set Mortar (Thinset): Latex-Portland Cement Mortar for Large-Format and Heavy Floor and Wall Tiles (LHT).
1. Polymer modified, dry-set cement mortar, complying with ANSI A118.4. and A118.15, for horizontal and vertical applications with non-slumping formula to minimize lippage and leveling requirements, in thicknesses from 3/32" to 1/2" setting bed after tile embedment.
 - a. Required for tile measuring 15 inches or more on any one side (large format) and tile weighing more than 5 lbs. per sq. ft. (heavy) ceramic or porcelain tile, natural stone, clay pavers, or other thin or medium bed applications.
 2. One of the following:
 - a. Big Tile & Stone (Bostik, Inc.)
 - b. ProLite Large Format Tile & Stone Mortar (Custom Building Products)
 - c. 255 MULTIMAX (Laticrete International)
 - d. Large Format Tile Mortar (Mapei Corporation)
 - e. Ultimate Large Tile Mortar (TEC Specialty Products)

2.4 GROUT MATERIALS

- A. Sand-Portland Cement Grout: ANSI A108.10, consisting of white or gray cement and white or colored aggregate as required to produce color indicated.
- B. High-Performance Tile Grout: Polymer modified cement grout, sanded or un-sanded as specified in ANSI A118.7.
1. Manufacturers: Subject to compliance with requirements, available manufacturers offering products that may be incorporated into the Work include:
 - a. Ardex Group.
 - b. Custom Building Products.
 - c. Laticrete International.
 - d. Mapei Corporation.
 - e. Approved Substitutions: Refer to Document 00 2600 "Procurement Substitution Procedures".

- ~~C. Water Cleanable Epoxy Grout: 100 percent solids commercial epoxy grout providing chemical and stain resistance and fast cure times exceeding ANSI A118.3.~~
- ~~1. Manufacturers: Subject to compliance with requirements, available manufacturers offering products that may be incorporated into the Work include:~~
- ~~a. Ardex Group.~~
- ~~b. Custom Building Products.~~
- ~~c. Laticrete International.~~
- ~~d. Mapei Corporation.~~
- ~~e. Approved Substitutions: Refer to Document 00 2600 "Procurement Substitution Procedures".~~

2.5 ADHESIVE MATERIALS

- A. Acrylic based, multi-purpose ceramic and marble tile adhesive complying with ANSI A136.1, Type II specification.
1. Manufacturers: Subject to compliance with requirements, available manufacturers offering products that may be incorporated into the Work include:
- a. Bonsal American, Inc.
- b. Bostik, Inc.
- c. Custom Building Products.
- d. Laticrete International.
- e. Mapei Corporation
- f. Approved Substitutions: Refer to Document 00 2600 "Procurement Substitution Procedures".

2.6 TRIM AND ACCESSORIES

- A. Metal Edge Transitions, Finishing, Protection, and Control Joint Strips: Aluminum profiles with integral provision for anchorage to mortar bed or substrate, unless otherwise indicated, (Schlüter Systems LP).
1. Metal Profiles: Refer to "Interior Materials Schedule" on Interior Drawings for model numbers, sizes, profiles and finishes.
2. Applications:
- a. Unless otherwise described on the "Interior Materials Schedule" or detailed on the Drawings, use in the following locations:
- 1) Open edges of floor tile.
- 2) Top edges of wall tile wainscot.
- 3) Transition between floor finishes of different heights.
- 4) Floor tile to wall corner transitions.

2.7 MISCELLANEOUS MATERIALS

- A. Concrete Substrates: Trowelable Underlayments and Patching Compounds: Latex-modified, portland cement-based formulation provided or approved by manufacturer of tile-setting materials for installations indicated.

- B. Tile Cleaner: A neutral cleaner capable of removing soil and residue without harming tile and grout surfaces, specifically approved for materials and installations indicated by tile and grout manufacturers.
- C. Floor Sealer: Manufacturer's standard product for sealing grout joints and that does not change color or appearance of grout.

2.8 MIXING MORTARS AND GROUT

- A. Mix mortars and grouts to comply with referenced standards and mortar and grout manufacturers' written instructions.
- B. Add materials, water, and additives in accurate proportions.
- C. Obtain and use type of mixing equipment, mixer speeds, mixing containers, mixing time, and other procedures to produce mortars and grouts of uniform quality with optimum performance characteristics for installations indicated.

PART 3 - EXECUTION

3.1 EXAMINATION

- A. Examine substrates, areas, and conditions where tile will be installed, with Installer present, for compliance with requirements for installation tolerances and other conditions affecting performance of the Work.
 - 1. Verify that substrates for setting tile are firm; dry; clean; free of coatings that are incompatible with tile-setting materials, including curing compounds and other substances that contain soap, wax, oil, or silicone; and comply with flatness tolerances required by ANSI A108.01 for installations indicated.
 - 2. Verify that concrete substrates for tile floors comply with surface finish requirements in ANSI A108.01 for installations indicated.
 - a. Test concrete slab for moisture emission rate and alkalinity to verify results are within the limits recommended by the tile manufacturer and setting material manufacturer. If the test results do not comply with their requirements, do not proceed with installation until instructions are obtained from both manufacturers.
 - b. Verify that surfaces that received a steel trowel finish have been mechanically scarified.
 - c. Verify that protrusions, bumps, and ridges have been removed by sanding or grinding.
 - 3. Verify that installation of grounds, anchors, recessed frames, electrical and mechanical units of work, and similar items located in or behind tile has been completed.
 - 4. Verify that joints and cracks in tile substrates are coordinated with tile joint locations; if not coordinated, adjust joint locations in consultation with Architect.
- B. Proceed with installation only after unsatisfactory conditions have been corrected.

3.2 PREPARATION

- A. Vacuum clean surfaces and damp clean.
- B. Prepare concrete substrates for tile floors installations with thin set repair mortar that comply with flatness tolerances specified in referenced ANSI A108 Series of tile installation standards.
 - 1. Fill cracks, holes, and depressions in concrete substrates for tile floors installed with trowelable leveling and patching compound specifically recommended by tile-setting material manufacturer.
- C. Waterproof and Crack Isolation/Anti-Fracture Membrane System: Install on substrates scheduled to receive floor tile in wet areas above occupied space below, including but not limited to Toilets, Kitchens, Janitors, etc. NO EXCEPTION.
 - 1. Install complying with ANSI A108.17 for waterproofing and crack isolation/anti-fracture membrane, and in accordance with manufacturer's written instructions to produce waterproofing and crack isolation/anti-fracture membrane of uniform thickness bonded securely to substrate. Install at the following locations:
 - 2. Extend over entire area to receive floor tile.
 - 3. Extend membrane 6" up vertical surfaces around entire perimeter of area to be waterproofed. If wall tile base is less than 6" without wall tile above, extend membrane to height of tile base.
 - 4. Extend membrane to outer edge of floor tile at door opening

3.3 INSTALLATION, GENERAL

- A. Install wall tile, floor tile, thresholds, and stair treads and grout in accordance with applicable requirements of ANSI A108 Series/A118 Series/A136.1, manufacturer's instructions, and TCNA Handbook recommendations.
 - 1. Lay tile to pattern indicated. Do not interrupt tile pattern through openings.
 - 2. Cut and fit tile to penetrations through tile, leaving sealant joint space. Form corners and bases neatly. Align floor joints.
 - 3. Place tile joints uniform in width, subject to variance in tolerance allowed in tile size. Make joints watertight, without voids, cracks, excess mortar, or excess grout.
 - 4. Form internal angles square and external angles bullnosed.
 - 5. Install non-ceramic trim in accordance with manufacturer's instructions.
 - 6. Install thresholds where indicated.
 - 7. Sound tile after setting. Replace hollow sounding units.
 - 8. Keep expansion joints free of adhesive or grout. Apply sealant to joints.
 - 9. Allow tile to set for a minimum of 48 hours prior to grouting.
 - 10. Grout tile joints. Use standard grout unless otherwise indicated.
 - 11. Apply sealant to junction of tile and dissimilar materials and junction of dissimilar planes.

3.4 INSTALLATION OF TILE BACKING PANELS

- A. Install panels and treat joints according to ANSI A108.11 and manufacturer's written instructions for type of application indicated.

3.5 INSTALLATION OF WATERPROOF AND CRACK ISOLATION MEMBRANES

- A. Install on substrates scheduled to receive floor tile in wet areas above occupied space below, including but not limited to Toilets, Kitchens, Janitors, etc. NO EXCEPTION.
- B. Install waterproof membrane to comply with ANSI A108.13 and manufacturer's written instructions to produce waterproof membrane of uniform thickness that is bonded securely to substrate. Install at the following locations:
 - 1. Extend over entire area to receive floor tile.
 - 2. Extend membrane 6" up vertical surfaces around entire perimeter of area to be waterproofed. If wall tile base is less than 6" without wall tile above then extend membrane to height of tile base.
- C. Extend membrane to outer edge of floor tile at door openings.
- D. Allow membrane to cure before installing tile or setting materials over it.

3.6 INSTALLATION OF CERAMIC FLOOR TILE

- A. Comply with TCNA's "Handbook for Ceramic, Glass, and Stone Tile Installation" for TCNA installation methods specified in tile installation schedules. Comply with parts of the ANSI A108 series "Specifications for Installation of Ceramic Tile" that are referenced in TCNA installation methods, specified in tile installation schedules, and apply to types of setting and grouting materials used.
- B. TCNA Method F113: On-Ground Concrete for Thin-Set Ceramic Tile; Latex-Portland cement bond coat with epoxy grout.
 - 1. Thin-Bed Dry-Set Mortar for tile units smaller than 15 inch dimension on all sides.
 - 2. Large and Heavy Tile (LHT) Mortar for tile units 15 inches and larger dimension on any side.
 - 3. Epoxy grout.
- C. TCNA Method F122A: Above-Ground Concrete, Thin Set Mortar Bed with Waterproof Membrane for Ceramic Tile; Latex-Portland cement bond coat with epoxy grout.
 - 1. Thin-Bed Dry-Set Mortar for tile units smaller than 15 inch dimension on all sides.
 - 2. Large and Heavy Tile (LHT) Mortar for tile units 15 inches and larger dimension on any side.
 - 3. Epoxy grout.

3.7 INSTALLATION OF CERAMIC WALL TILE

- A. Comply with TCNA's "Handbook for Ceramic, Glass, and Stone Tile Installation" for TCNA installation methods specified in tile installation schedules. Comply with parts of the ANSI A108 series "Specifications for Installation of Ceramic Tile" that are referenced in TCNA installation methods, specified in tile installation schedules, and apply to types of setting and grouting materials used.

- B. TCNA Method W243: Wood or Metal Studs, Gypsum Board, Cementitious Bond Coat for Ceramic Tile; Latex-Portland cement bond coat with Polymer modified cement grout, un-sanded.
 - 1. Dry areas ONLY, not subject to moisture.
- C. TCNA Method W244C: Wood or Metal Studs, Cementitious Backer Unit, Ceramic Tile; Latex-Portland cement bond coat with Polymer modified cement grout, un-sanded.
 - 1. Plumbing Walls, but NOT Showers.

3.8 INSTALLATION OF JOINTS

- A. Joints
 - 1. Construct expansion or control joints in accordance with TCNA Method EJ171.
 - 2. Joint Width: Match grouted joints but not less than 1/8" for ceramic tile and 1/4" for porcelain paver tile.
 - 3. Location
 - a. If locations of such joints are not shown, provide joints at restraining surfaces, such as walls, curbs, columns, pipes, etc., over expansion joints in backing and at changes in backing material. Do not saw-cut joints after installing tiles.
 - b. In large interior tiled areas, expansion joints shall occur not more than 36 ft. o.c. each way.
 - c. To the greatest extent, locate joints in tile surfaces directly above joints in concrete substrates.

3.9 CLEANING

- A. Upon completion of tile work in each area, including work specified under other Sections, clean all tile surfaces with warm water and cleaners recommended by tile and grout manufacturers and only after determining that cleaners are safe to use by testing on samples of tile and other surfaces to be cleaned.
- B. Sponge and wash tile thoroughly, working diagonally across joints; polish with dry cloths.
- C. Removing Surface Grout: Leave face of all tile clean and free from grout or other stains.
 - 1. Remove surface laitance and excess grout with dry polishing cloths, or in accordance with tile and grout manufacturers' instructions.
 - 2. Protect metal surfaces and plumbing fixtures from effects of cleaning. Flush surfaces with clean water before and after cleaning.
 - 3. Damp mop grouted floors twice daily for not less than 7 days following installation.
 - 4. Clean grouted walls and ceilings twice daily for not less than 7 days following installation.
- D. Immediately prior to occupancy by the Owner, wash tile surfaces again, and perform additional grouting that may be necessary.

3.10 PROTECTION

- A. Protect installed tile work with kraft paper or other heavy covering during construction period to prevent staining, damage, and wear. If recommended by tile manufacturer, apply coat of neutral protective cleaner to completed tile walls and floors.
- B. Prohibit foot and wheel traffic from tiled floors for at least seven days after grouting is completed.
 - 1. If tiled floor areas must be used for walkways during construction, protect the tile with plywood or board structure that does not make direct contact with the tile surfaces,
- C. Before final inspection, remove protective coverings and rinse neutral protective cleaner from tile surfaces.

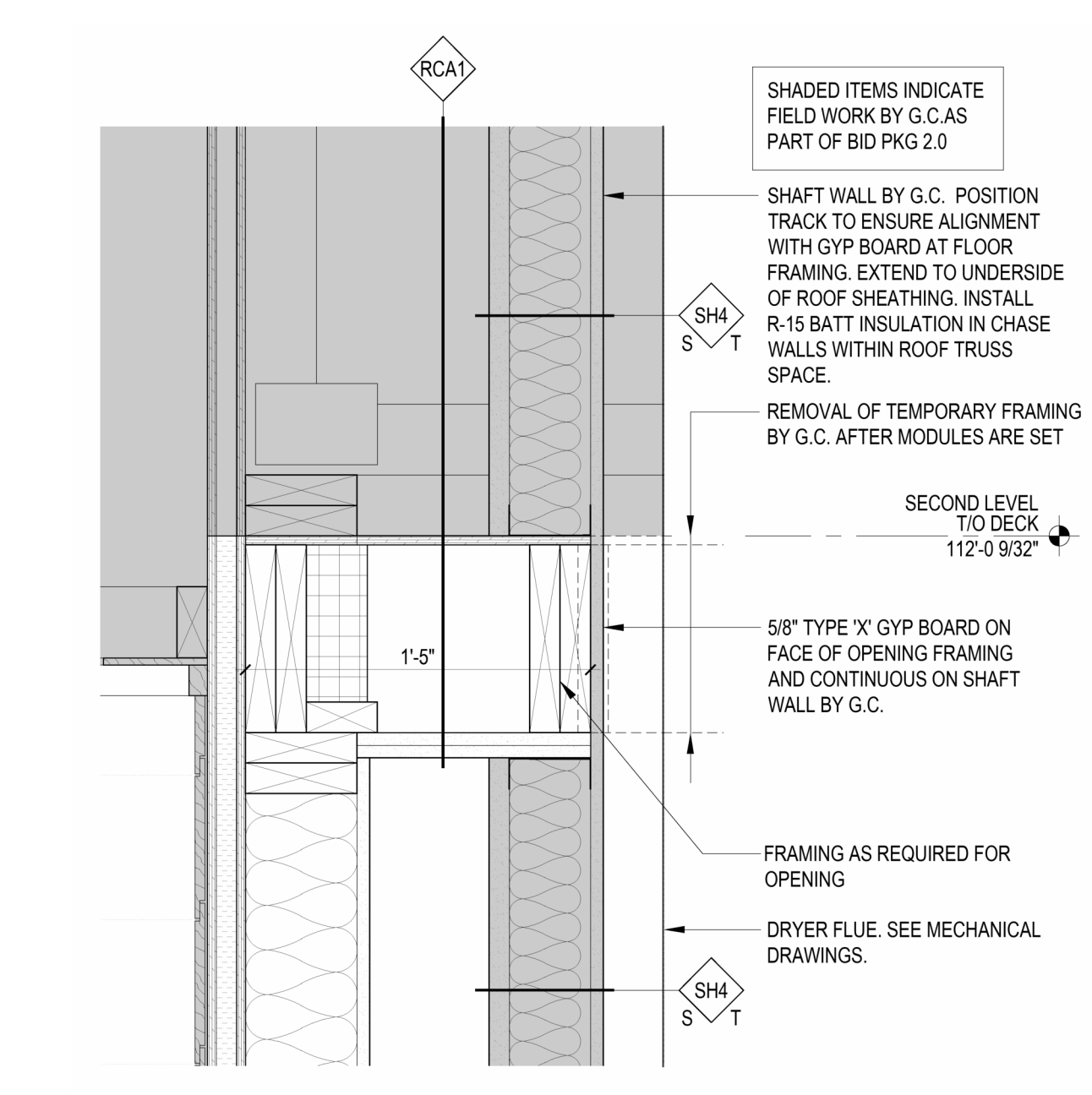
END OF SECTION 09 3013



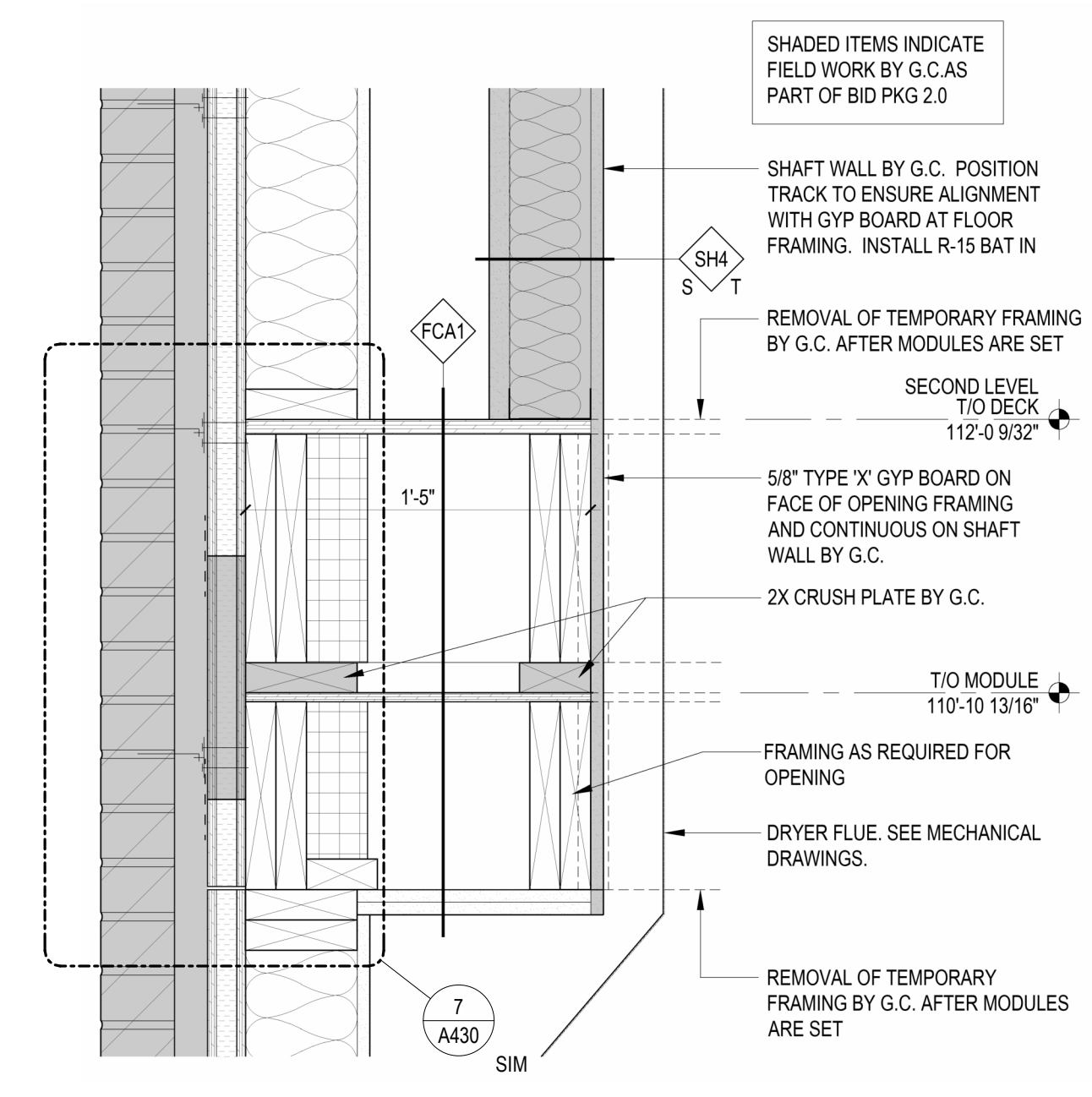
Mandan, Hidatsa and Arikara Nation
 Three Affiliated Tribes of North Dakota
 307 5th Avenue
 New Town, ND 58763

Parshall Hotel and Laundromat
 205 Main Street
 Parshall, ND 58770

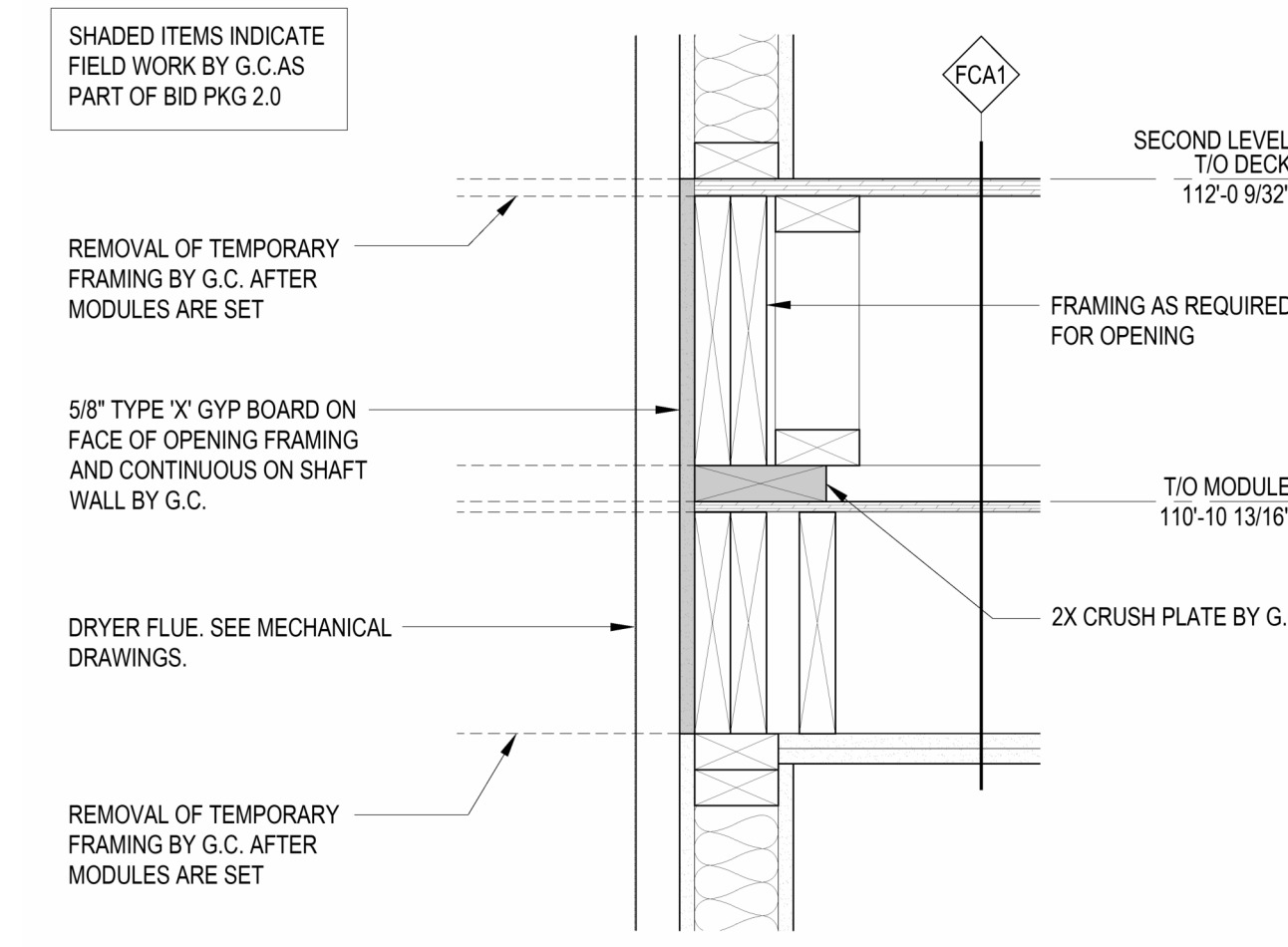
Revisions	
No.	Revision Description
1	03/30/2026 Rd. 3 Plan Check Comments
2	04/30/2026 Rd. 4 Plan Check Comments
3	05/04/2026 Issued for Re-Bid BP2.0R1
3	5/31/2026 BP2.0R1, ADD8.0



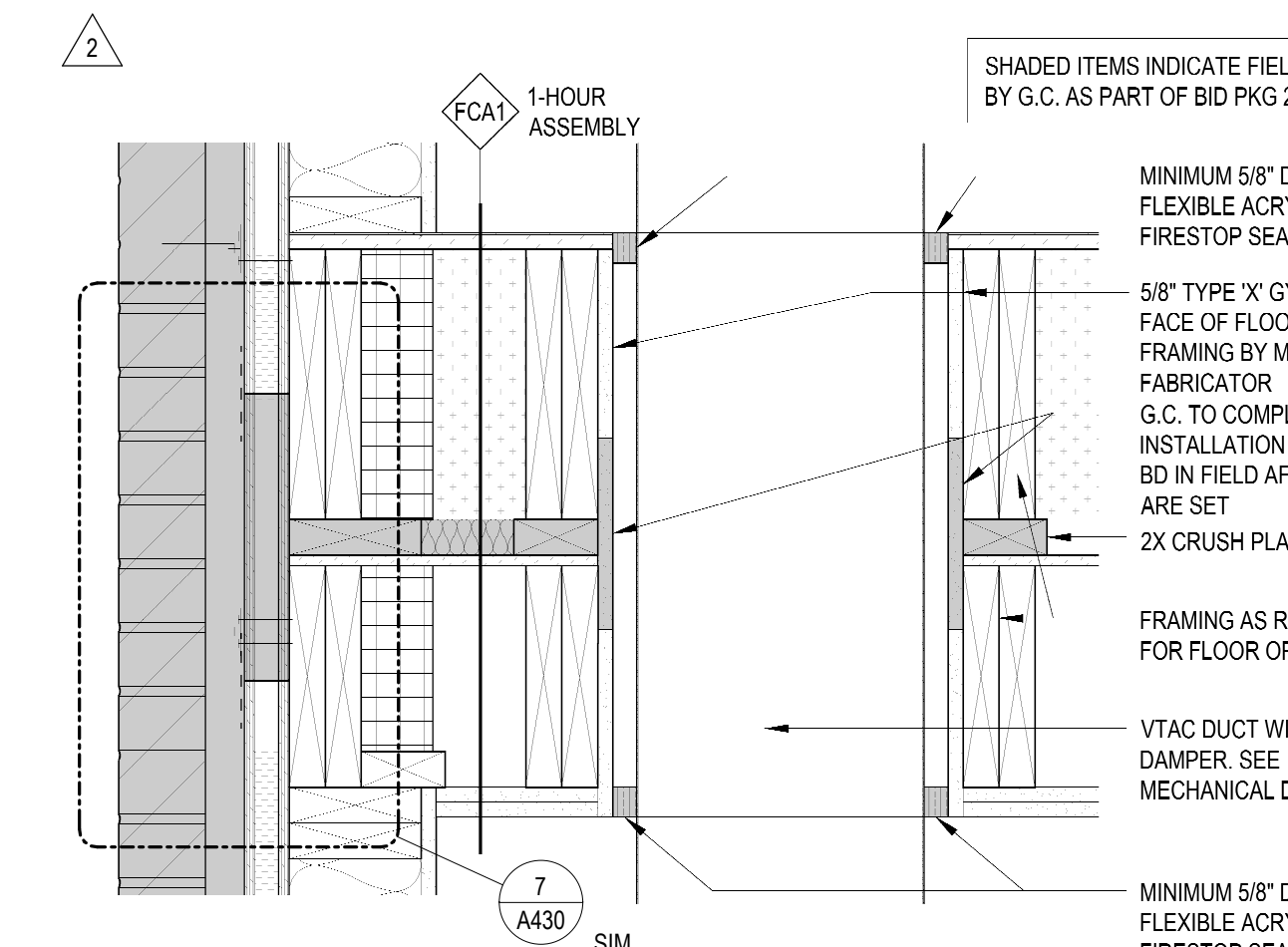
6 CHASE WALL AT ROOF-CEILING ASSEMBLY
 1 1/2" = 1'-0"



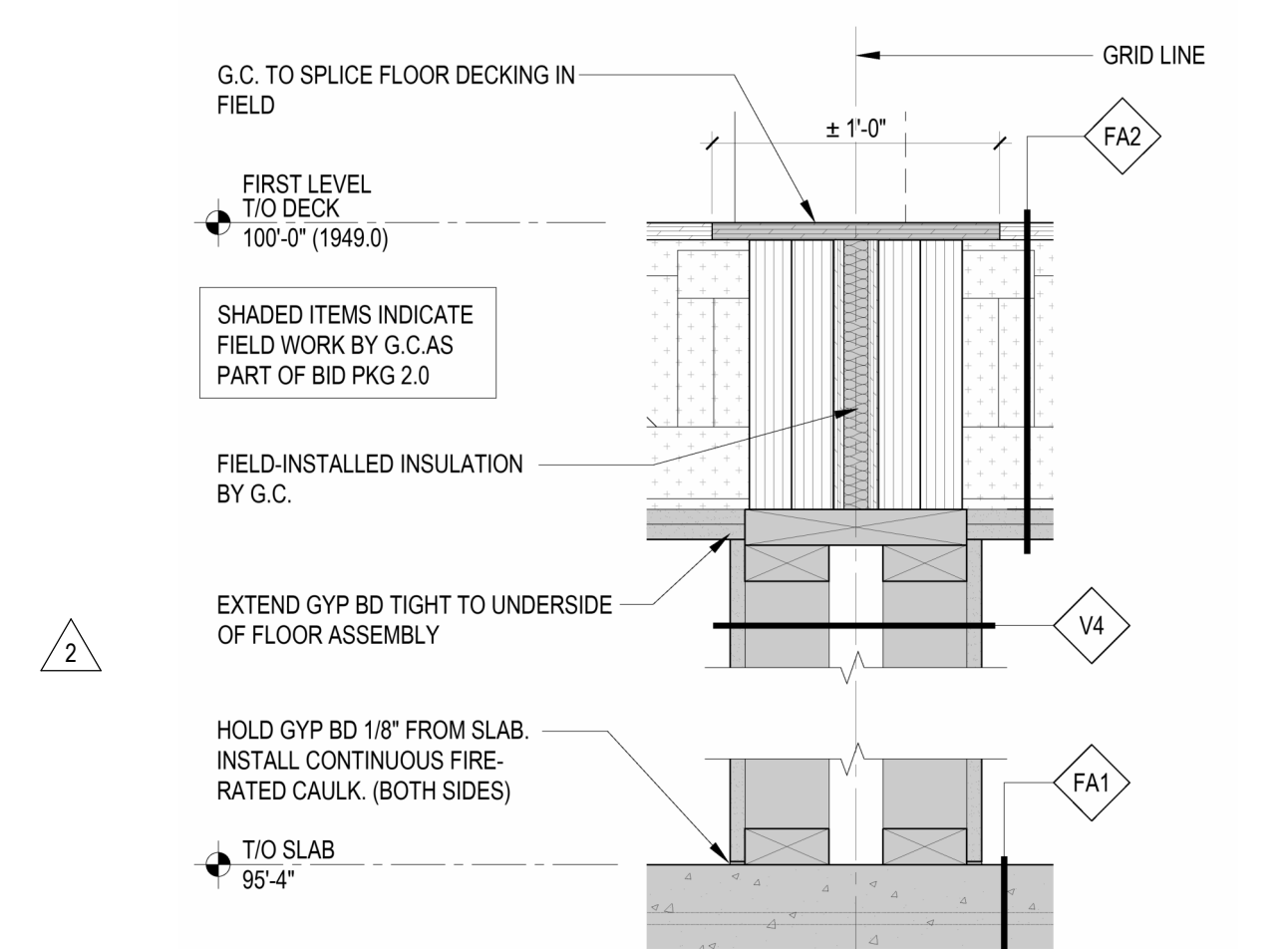
11 CHASE WALL AT FLR-CLNG ASMBLY AT EXTR WALL
 1 1/2" = 1'-0"



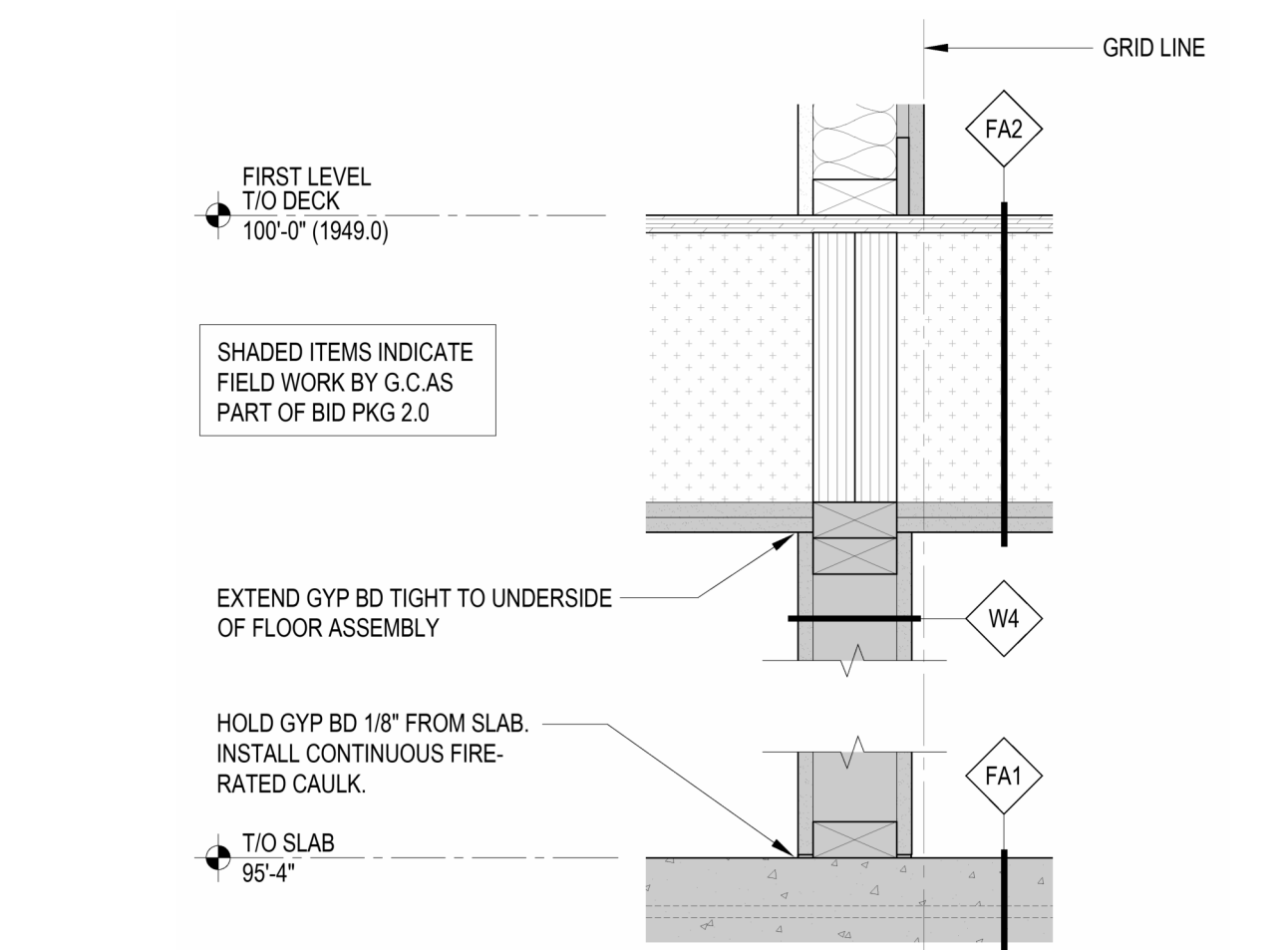
16 LAUNDROMAT CHASE WALL AT FLR-CLNG ASSEMBLY
 1 1/2" = 1'-0"



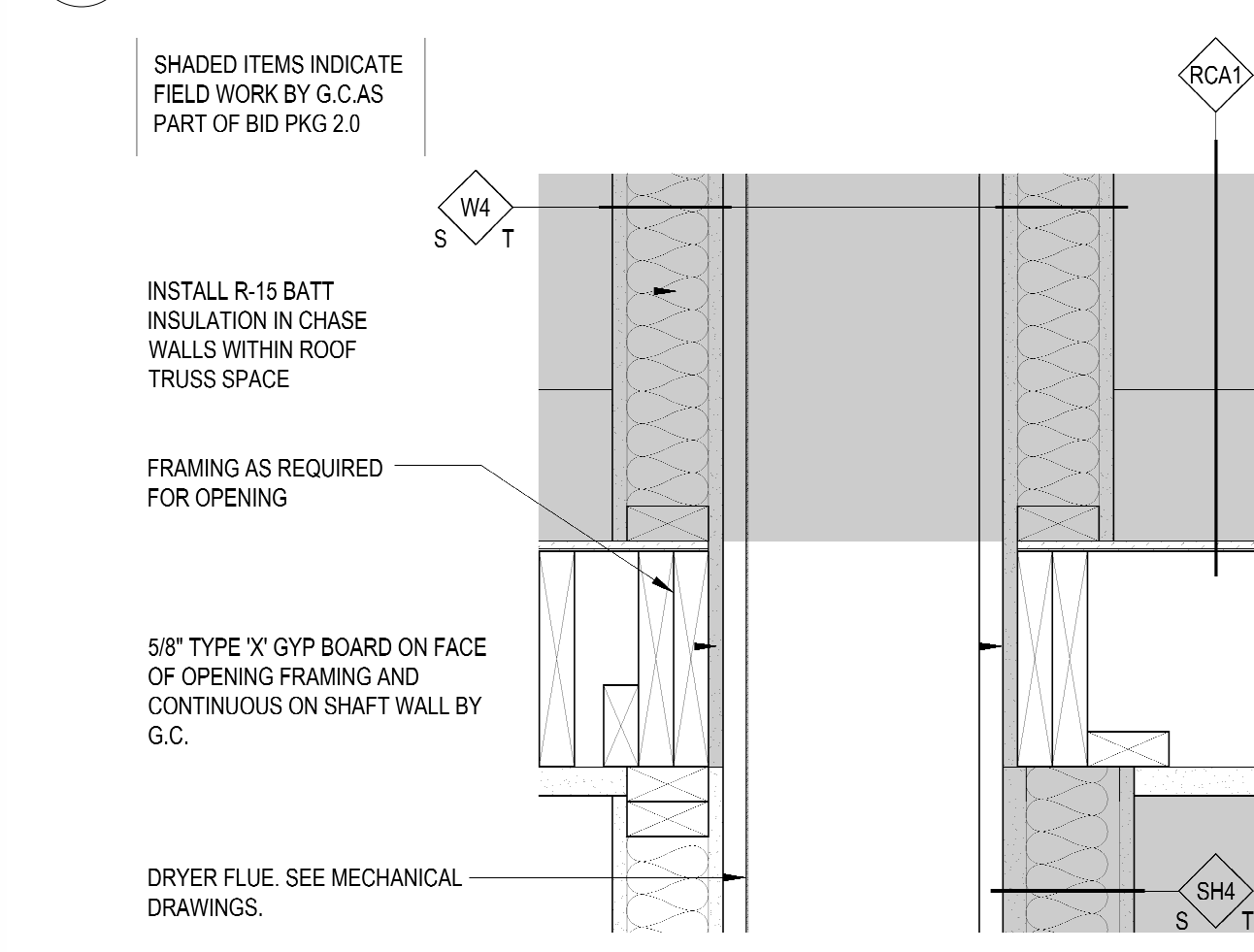
21 DETAIL AT VTAC DUCT AND FLOOR-CEILING ASSEMBLY
 1 1/2" = 1'-0"



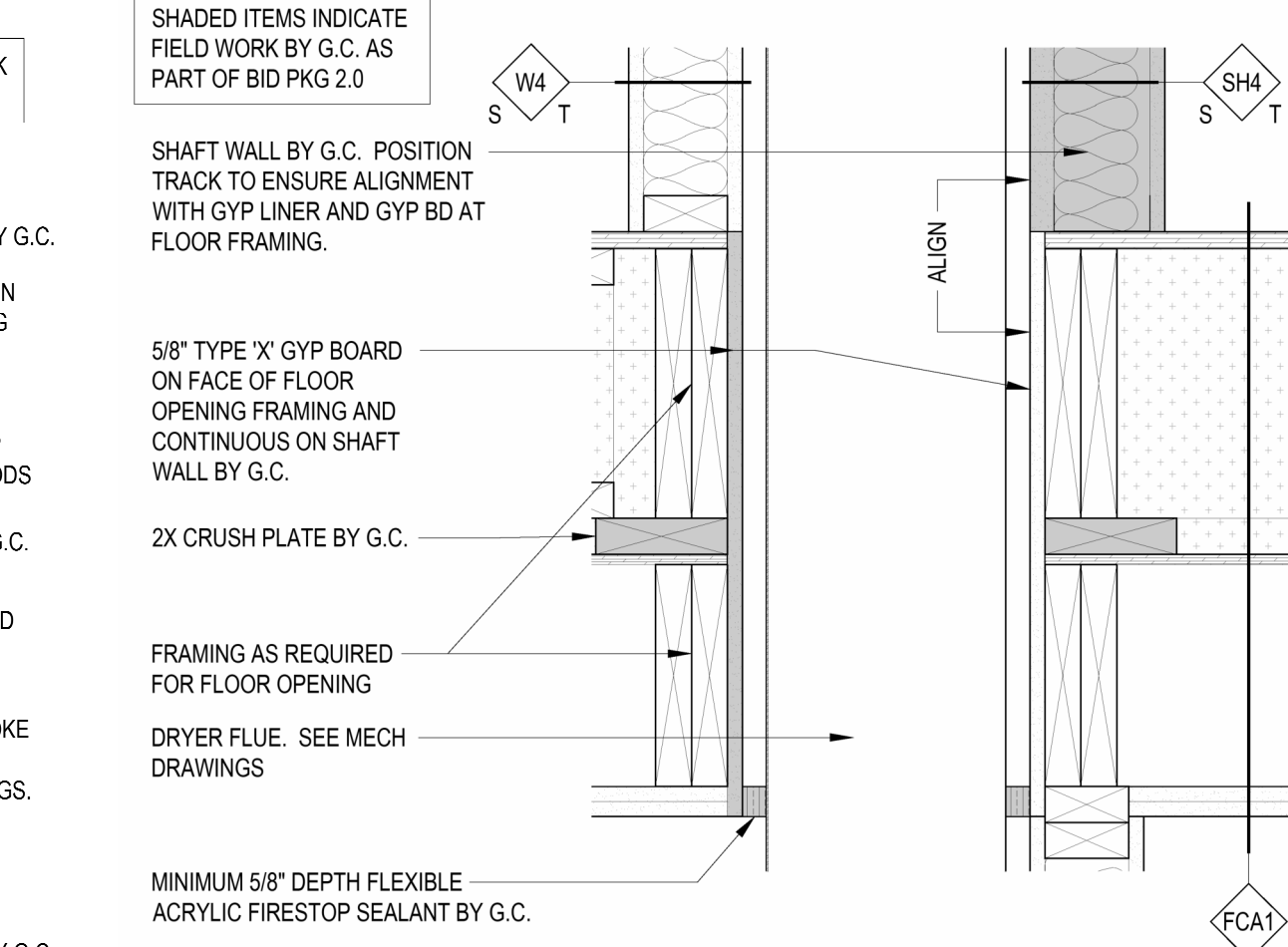
7 DETAIL AT STAIR AND DEMISING KNEEWALL
 1 1/2" = 1'-0"



12 DETAIL AT STAIR AND CORRIDOR KNEEWALL
 1 1/2" = 1'-0"



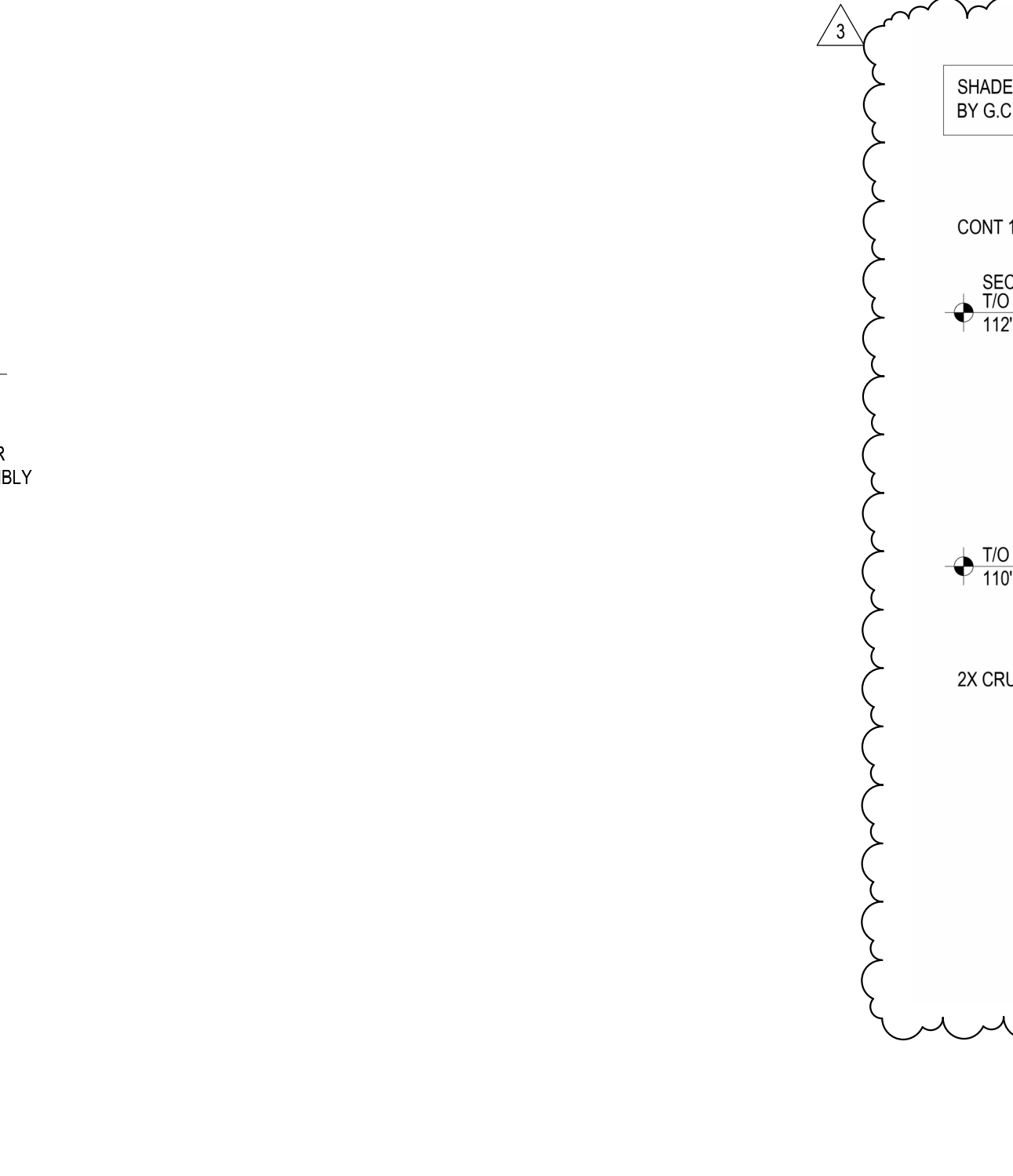
17 DETAIL AT DRYER FLUE CHASE AND ROOF-CEILING ASSEMBLY
 1 1/2" = 1'-0"



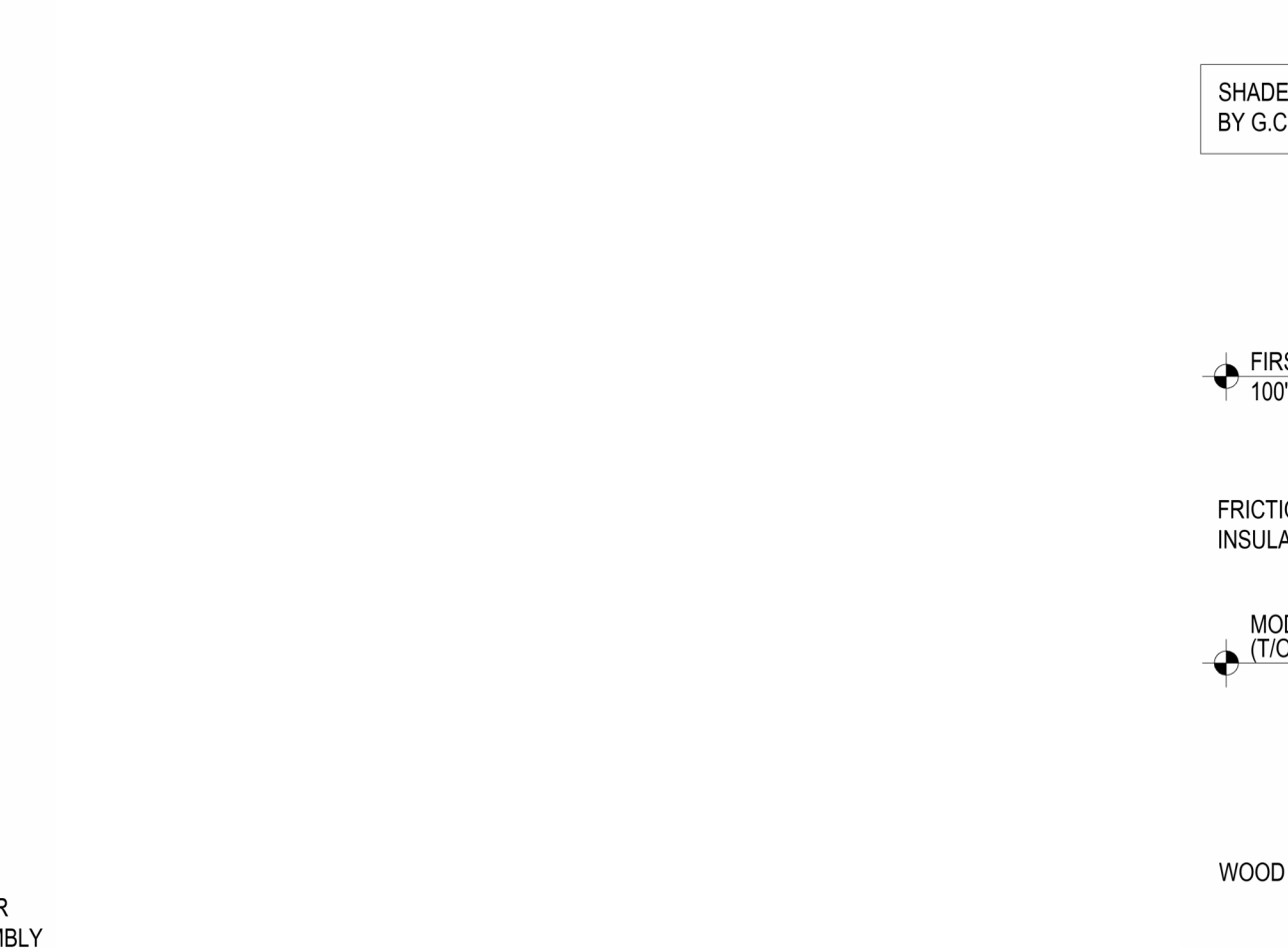
22 DETAIL AT DRYER FLUE CHASE AND FLOOR-CEILING ASSEMBLY
 1 1/2" = 1'-0"



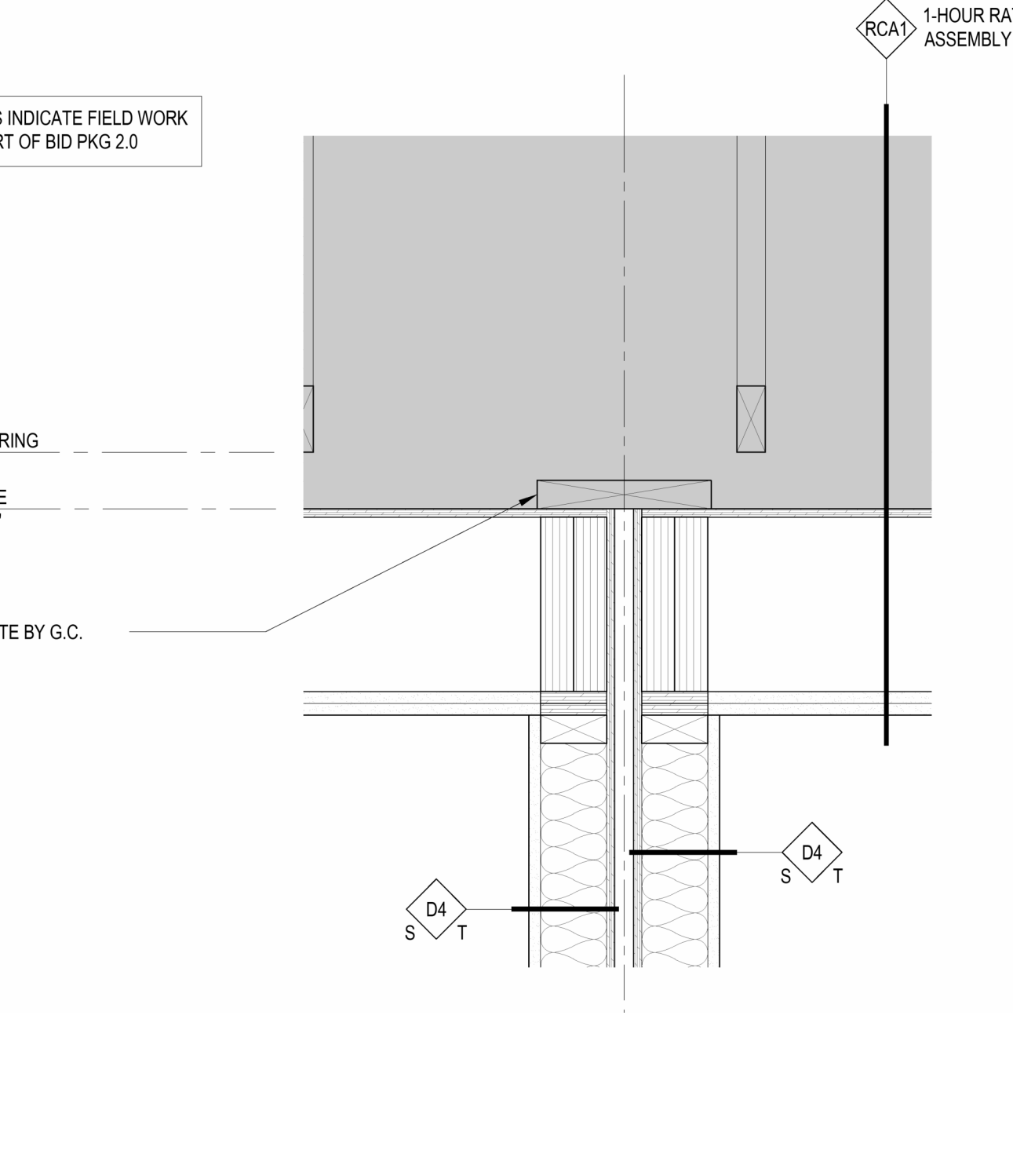
13 DETAIL AT DEMISING WALL AND ROOF-CEILING ASSEMBLY
 1 1/2" = 1'-0"



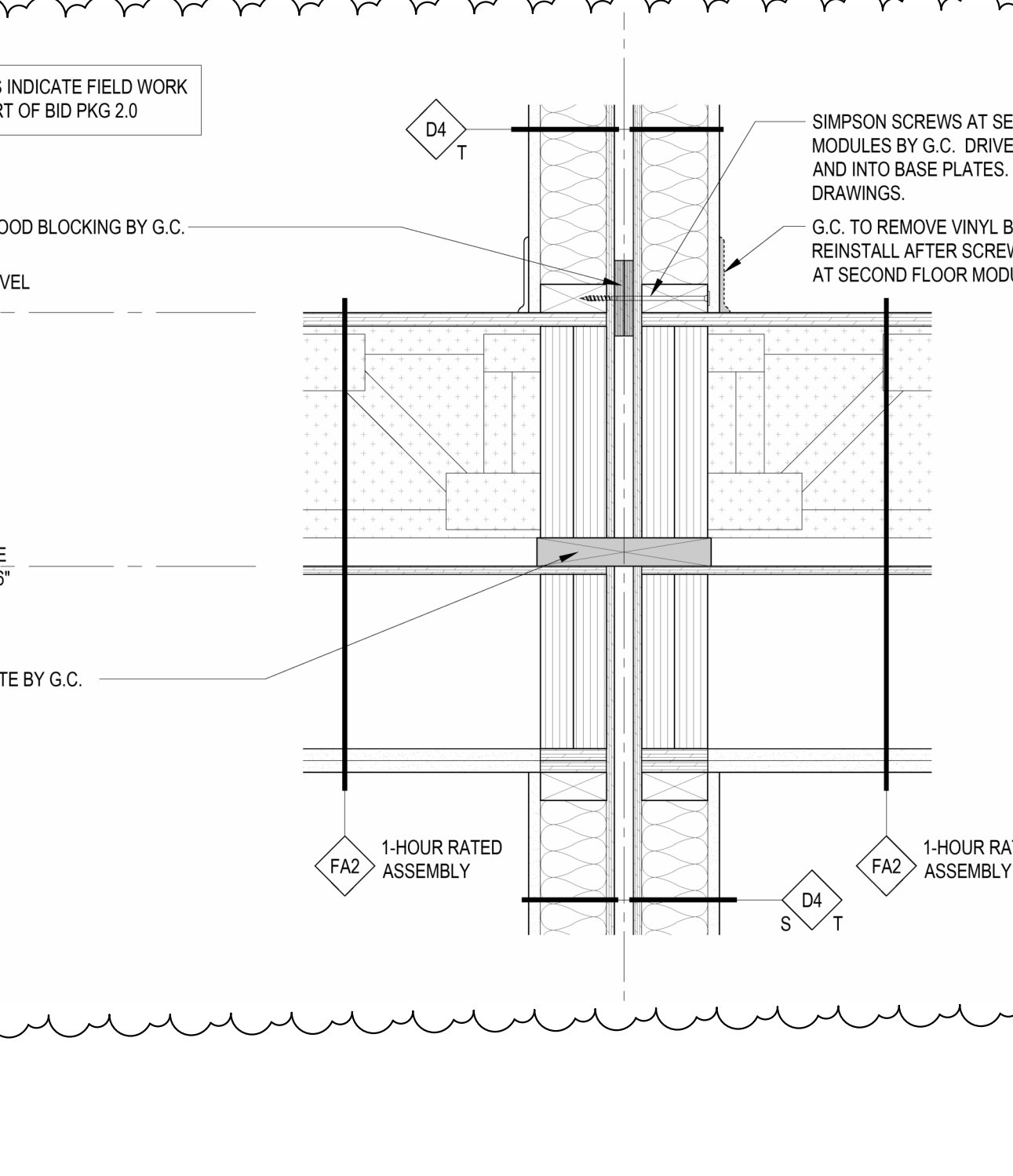
18 DETAIL AT DEMISING WALL AND FLOOR-CEILING ASSEMBLY
 1 1/2" = 1'-0"



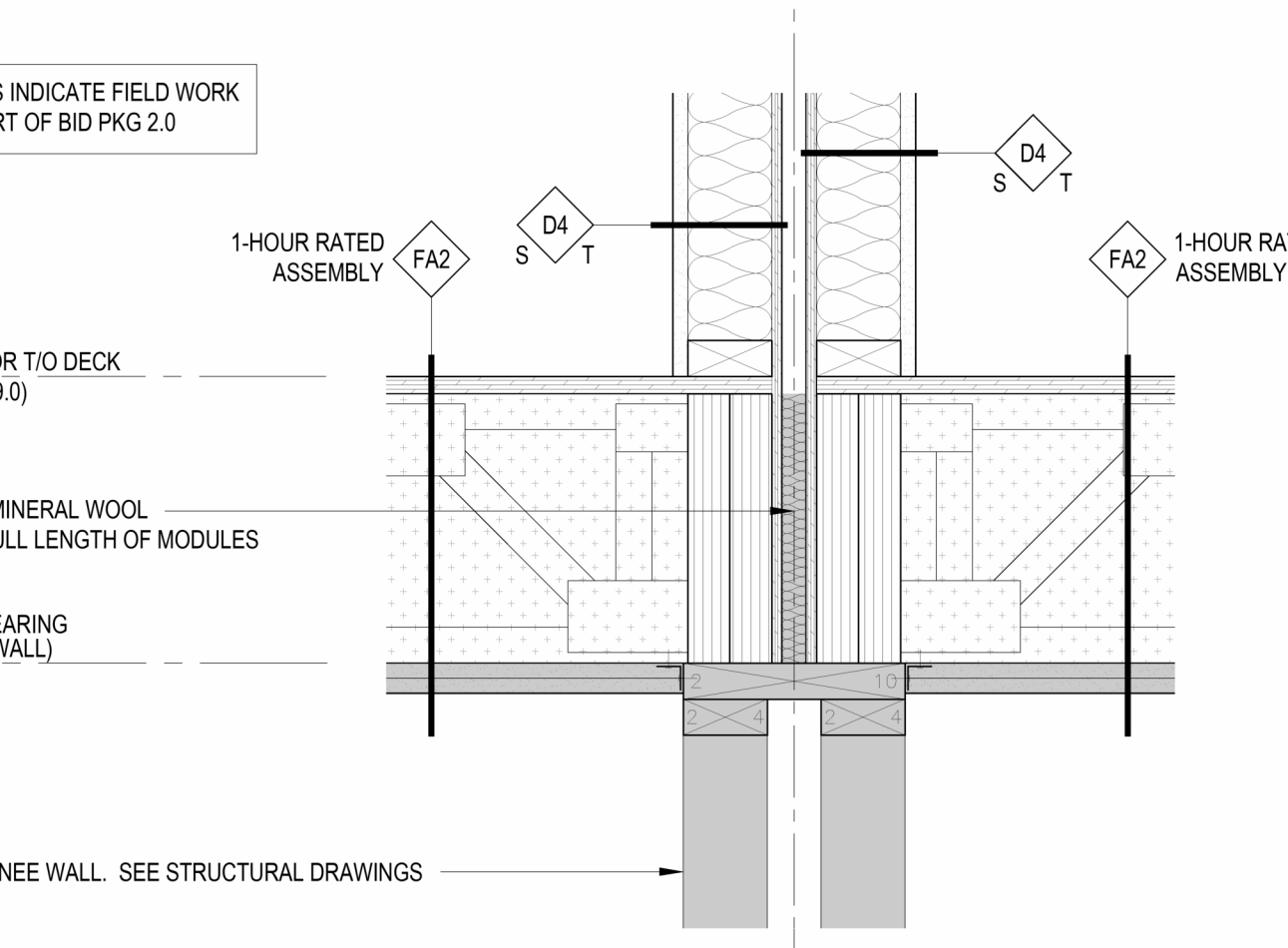
23 DETAIL AT DEMISING WALL AND KNEEWALL
 1 1/2" = 1'-0"



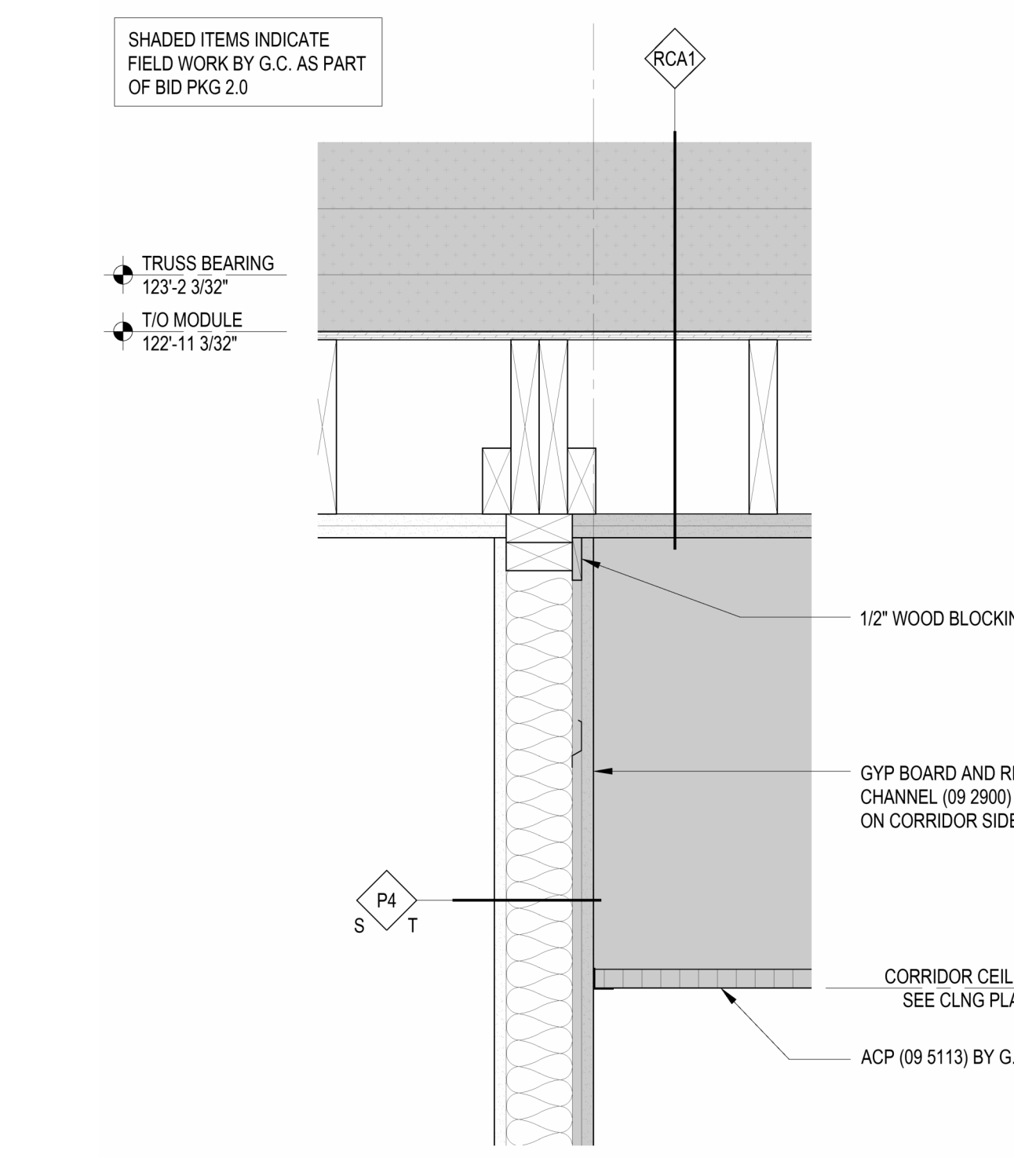
15 DETAIL AT CORRIDOR WALL & ROOF-CEILING ASMBLY
 1 1/2" = 1'-0"



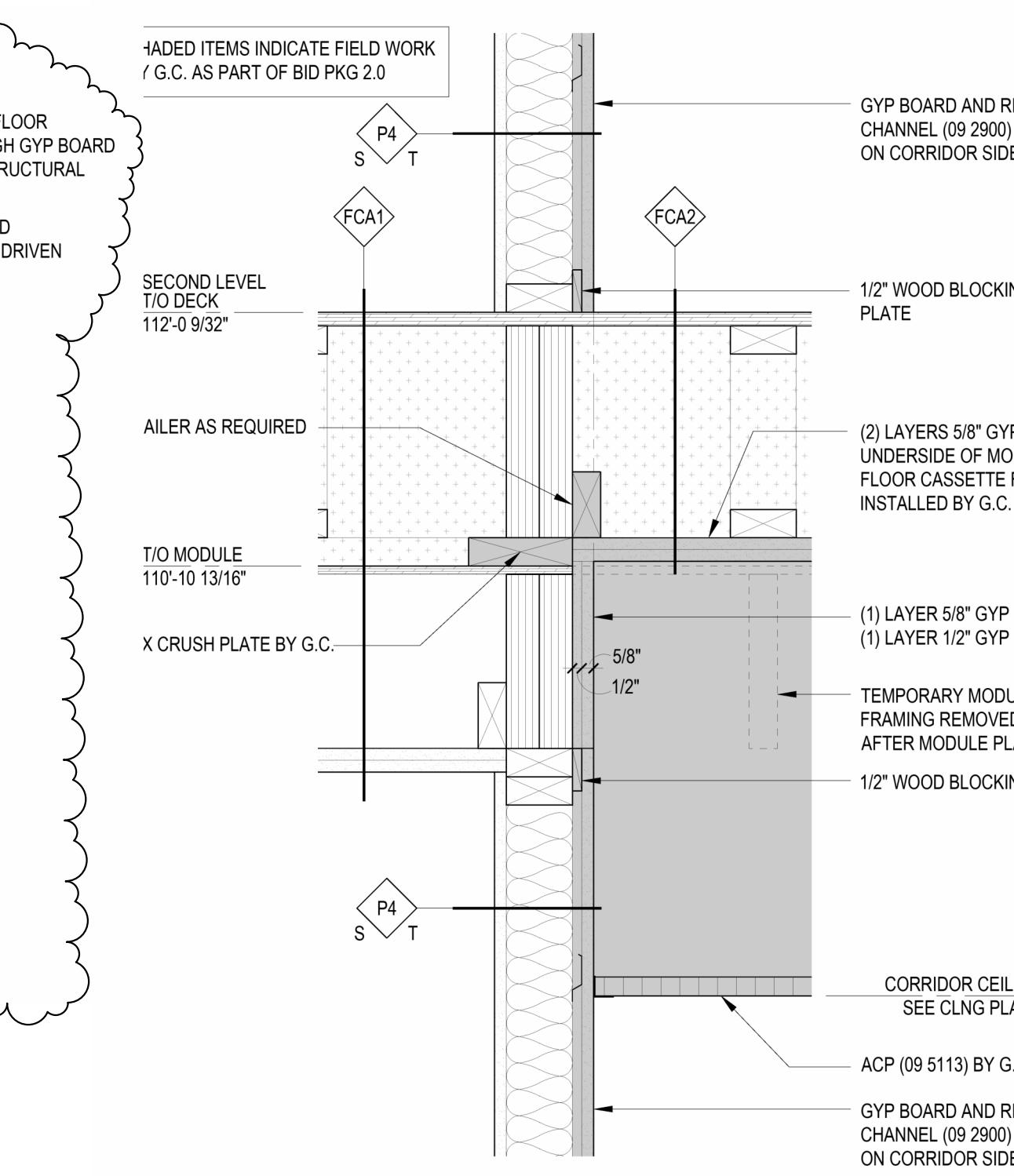
20 DETAIL AT CORRIDOR WALL & FLOOR-CEILING ASMBLY
 1 1/2" = 1'-0"



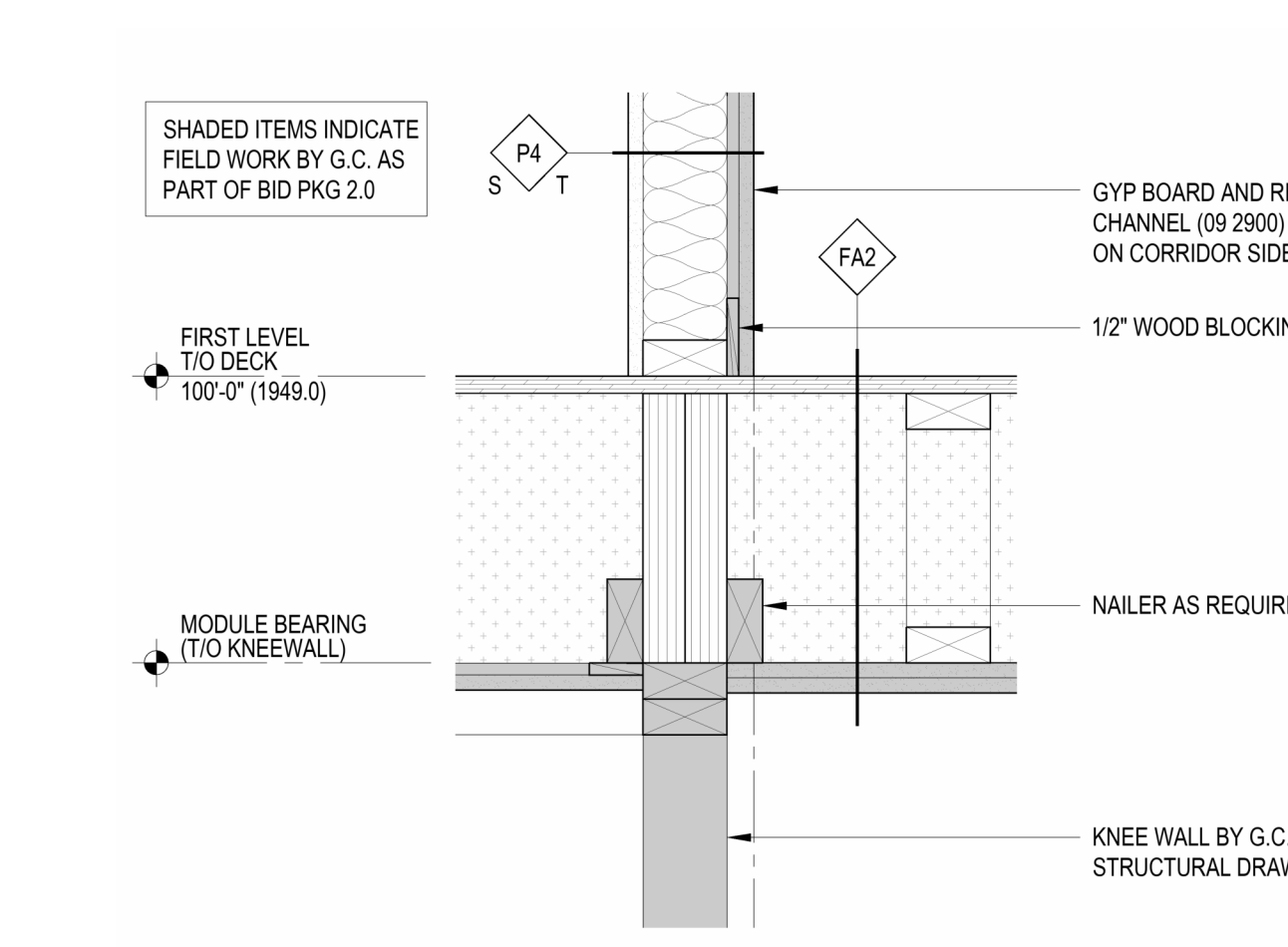
25 DETAIL AT CORRIDOR WALL AND KNEEWALL
 1 1/2" = 1'-0"



13 DETAIL AT DEMISING WALL AND ROOF-CEILING ASSEMBLY
 1 1/2" = 1'-0"



15 DETAIL AT CORRIDOR WALL & ROOF-CEILING ASMBLY
 1 1/2" = 1'-0"



20 DETAIL AT CORRIDOR WALL & FLOOR-CEILING ASMBLY
 1 1/2" = 1'-0"